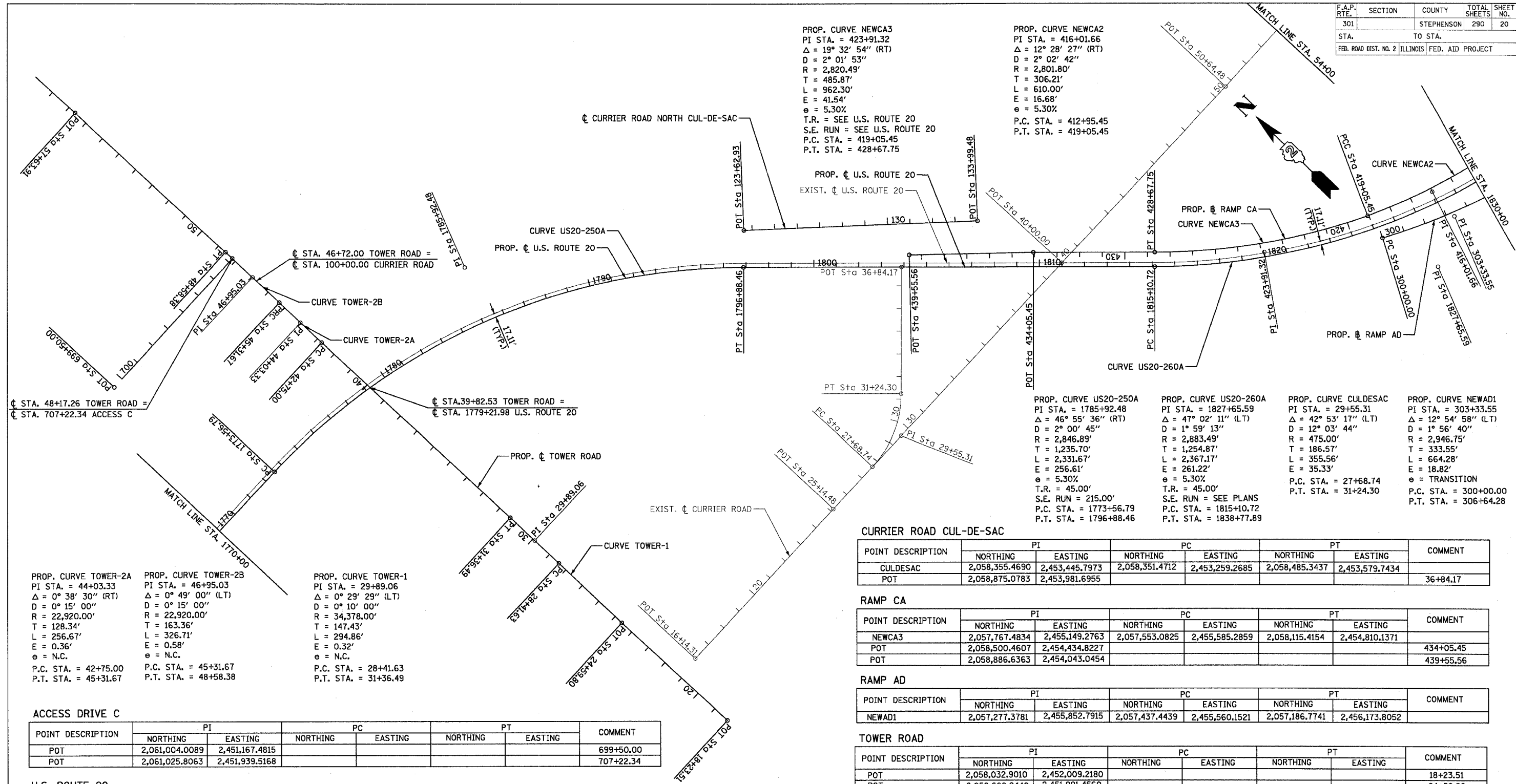


F.A.P. RTE.	SECTION	COUNTY	TOTAL SHEETS	SHEET NO.
301		STEPHENSON	290	20
STA.		TO STA.		
FED. ROAD DIST. NO. 2 ILLINOIS FED. AID PROJECT				



CURRIER ROAD CUL-DE-SAC

POINT DESCRIPTION	PI		PC		PT		COMMENT
	NORTHING	EASTING	NORTHING	EASTING	NORTHING	EASTING	
CULDESAC	2,058,355.4690	2,453,445.7973	2,058,351.4712	2,453,259.2685	2,058,485.3437	2,453,579.7434	
POT	2,058,875.0783	2,453,981.6955					36+84.17

RAMP CA

POINT DESCRIPTION	PI		PC		PT		COMMENT
	NORTHING	EASTING	NORTHING	EASTING	NORTHING	EASTING	
NEWCA3	2,057,767.4834	2,455,149.2763	2,057,553.0825	2,455,585.2859	2,058,115.4154	2,454,810.1371	
POT	2,058,500.4607	2,454,434.8227					434+05.45
POT	2,058,886.6363	2,454,043.0454					439+55.56

RAMP AD

POINT DESCRIPTION	PI		PC		PT		COMMENT
	NORTHING	EASTING	NORTHING	EASTING	NORTHING	EASTING	
NEWAD1	2,057,277.3781	2,455,852.7915	2,057,437.4439	2,455,560.1521	2,057,186.7741	2,456,173.8052	

TOWER ROAD

POINT DESCRIPTION	PI		PC		PT		COMMENT
	NORTHING	EASTING	NORTHING	EASTING	NORTHING	EASTING	
POT	2,058,032.9010	2,452,009.2180					18+23.51
POT	2,058,668.9440	2,451,991.4560					24+59.80
TOWER-1	2,059,198.1248	2,451,982.6740	2,059,050.7141	2,451,985.1204	2,059,345.5090	2,451,978.9634	
TOWER-2A	2,060,611.9542	2,451,947.0791	2,060,483.6587	2,451,950.3091	2,060,740.2779	2,451,945.2860	
TOWER-2B	2,060,903.6211	2,451,943.0035	2,060,740.2783	2,451,945.2860	2,061,066.9148	2,451,938.3930	
POT	2,061,972.0880	2,451,912.8360					57+63.91

ACCESS DRIVE C

POINT DESCRIPTION	PI		PC		PT		COMMENT
	NORTHING	EASTING	NORTHING	EASTING	NORTHING	EASTING	
POT	2,061,004.0089	2,451,167.4815					699+50.00
POT	2,061,025.8063	2,451,939.5168					707+22.34

U.S. ROUTE 20

POINT DESCRIPTION	PI		PC		PT		COMMENT
	NORTHING	EASTING	NORTHING	EASTING	NORTHING	EASTING	
US20-250A	2,060,261.2383	2,452,630.5664	2,060,235.5010	2,451,395.1370	2,059,376.3585	2,453,493.0836	
US20-260A	2,057,172.8343	2,455,640.9206	2,058,071.4414	2,454,765.0230	2,057,201.3742	2,456,895.4631	

CURRIER ROAD NORTH CUL-DE-SAC

POINT DESCRIPTION	PI		PC		PT		COMMENT
	NORTHING	EASTING	NORTHING	EASTING	NORTHING	EASTING	
POT	2,059,490.0543	2,453,612.3531					123+62.93
POT	2,058,776.6715	2,454,364.3592					133+99.48

REVISIONS	
NAME	DATE

ILLINOIS DEPARTMENT OF TRANSPORTATION

ALIGNMENT, TIES AND BENCHMARKS

SCALE: VERT. HORIZ. 1" = 200'
 DATE 7/15/05

DRAWN BY MBT
 CHECKED BY RP