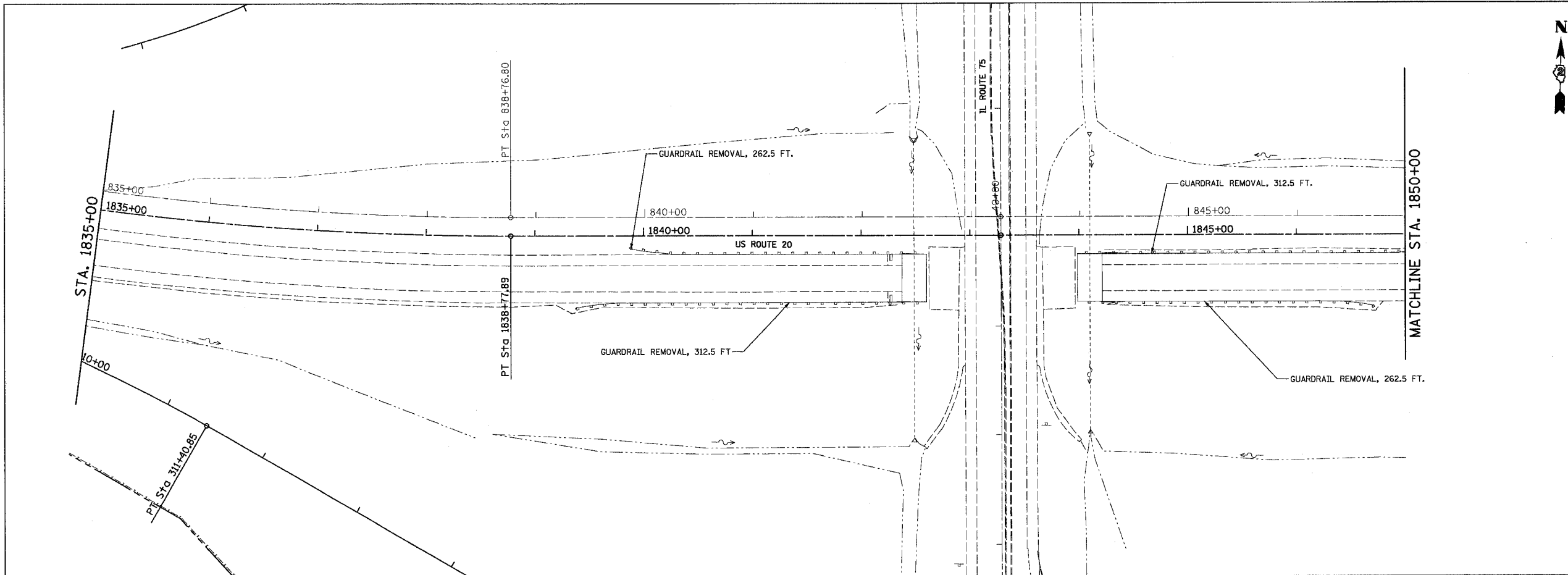
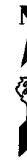


CONTRACT NO. 64577

F.A.P. RTE.	SECTION	COUNTY	TOTAL SHEETS	SHEET NO.
301		STEPHENSON	290	48
STA. 1835+00		TO STA. 1847+00		
FED. ROAD DIST. NO. 2 ILLINOIS FED. AID PROJECT				



	BITUMINOUS SHOULDER REMOVAL		COMBINATION CONCRETE CURB CURB AND GUTTER REMOVAL
	MEDIAN REMOVAL		PAVEMENT REMOVAL

REVISIONS		ILLINOIS DEPARTMENT OF TRANSPORTATION
NAME	DATE	
		<p style="text-align: center;">REMOVAL PLAN U.S. ROUTE 20 STA. 1835+00 TO STA. 1850+00</p>
		<p>SCALE: VERT. DRAWN BY MBT HORIZ. 1"=50' DATE 7/15/05 CHECKED BY JC</p>