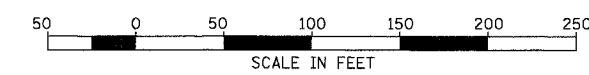
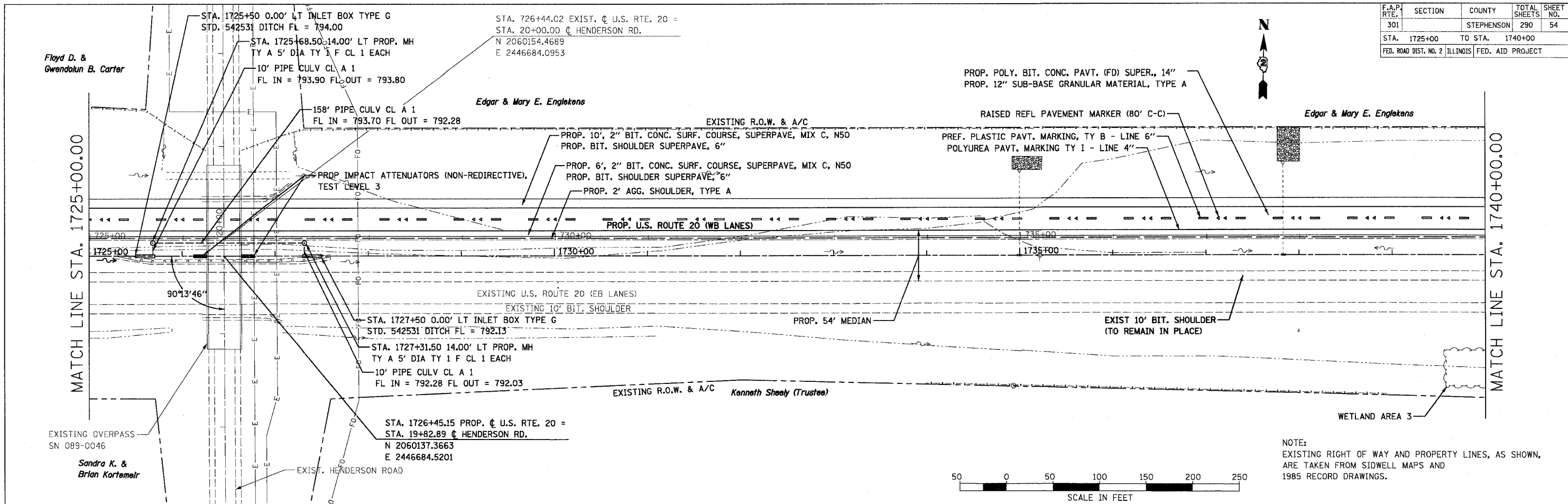
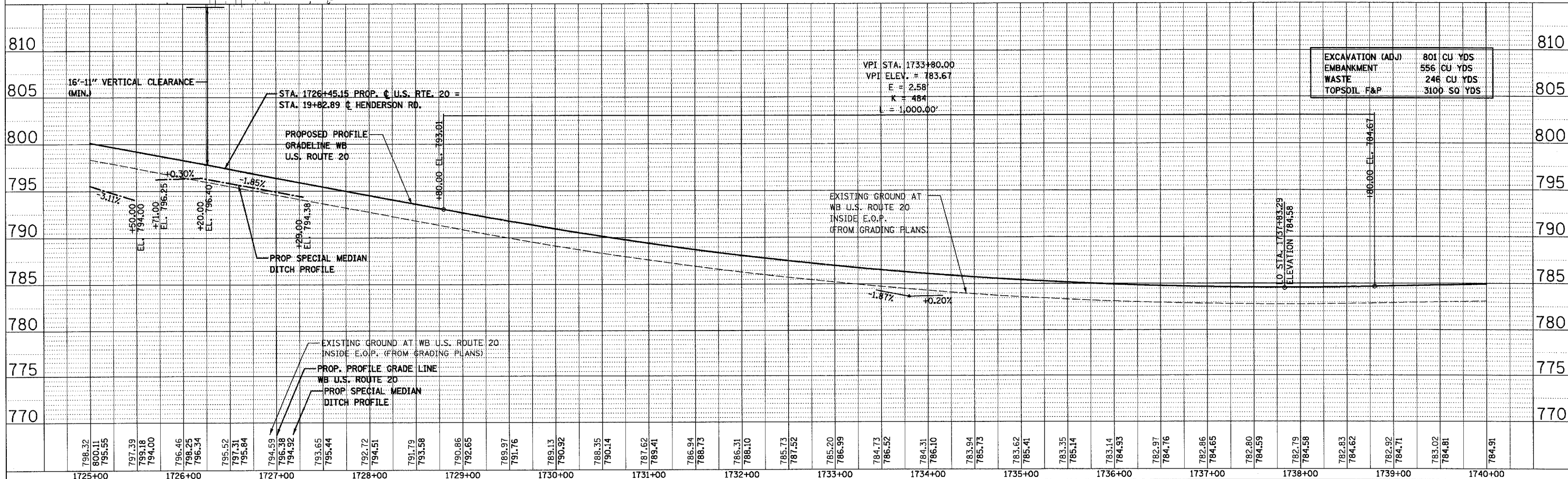


F.A.P. RTE.	SECTION	COUNTY	TOTAL SHEETS	SHEET NO.
301		STEPHENSON	290	54
STA. 1725+00		TO STA. 1740+00		
FED. ROAD DIST. NO. 2		ILLINOIS		FED. AID PROJECT



NOTE:  
 EXISTING RIGHT OF WAY AND PROPERTY LINES, AS SHOWN, ARE TAKEN FROM SIDWELL MAPS AND 1985 RECORD DRAWINGS.



US ROUTE 20 (SHEET 4 OF 17)  
 STA. 1725+00 TO STA. 1740+00

DATE	BY	REVISION

DATE	BY	REVISION