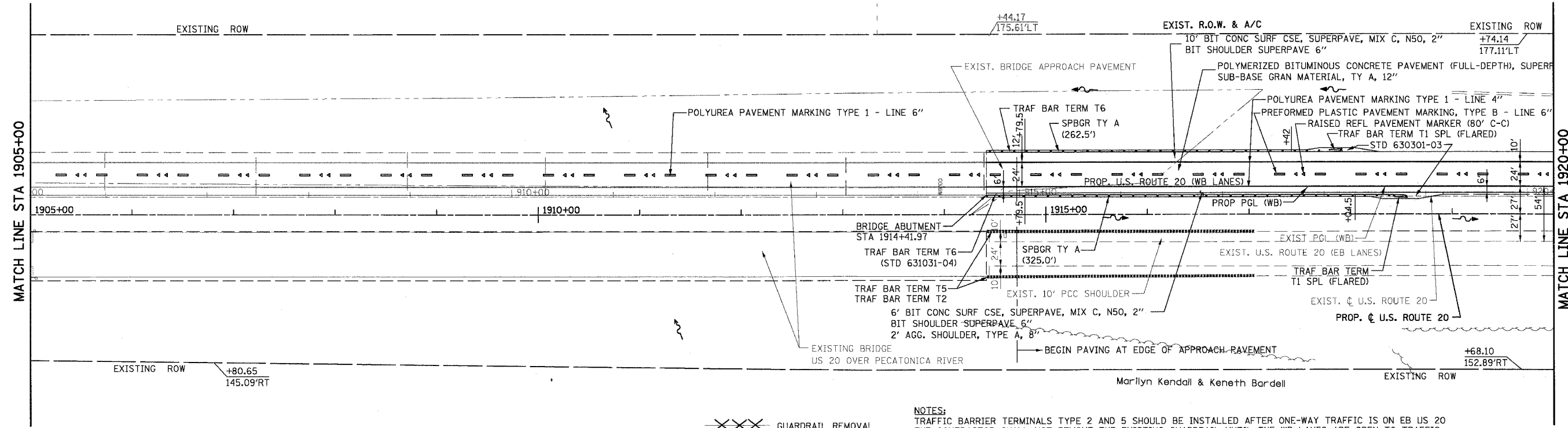
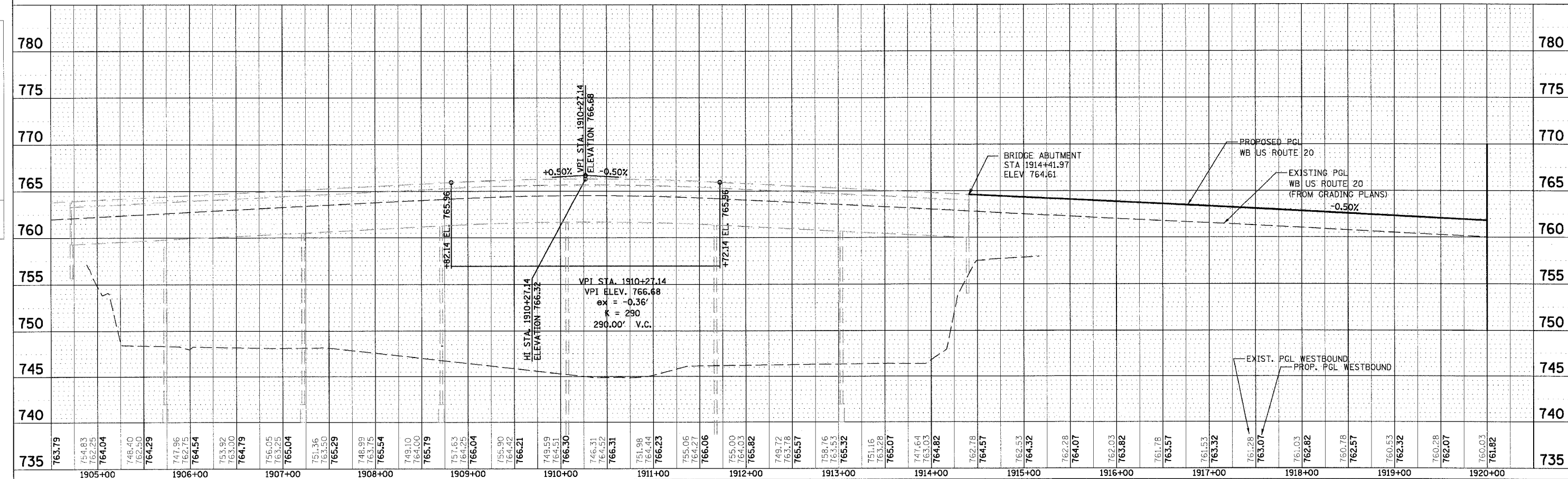
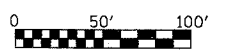


CONTRACT NO. 64577				
F.A.P. RTE.	SECTION	COUNTY	TOTAL SHEETS	SHEET NO.
301	*	STEPHENSON	290	68
STA. 1915+00		TO STA. 1920+00		
FED. ROAD DIST. NO. 2		ILLINOIS FED. AID PROJECT		
• 177-13, 4, 4-1-1				



NOTES:
 TRAFFIC BARRIER TERMINALS TYPE 2 AND 5 SHOULD BE INSTALLED AFTER ONE-WAY TRAFFIC IS ON EB US 20
 THE CONTRACTOR SHALL NOT REMOVE THE EXISTING GUARDRAIL UNTIL THE WB LANES ARE OPEN TO TRAFFIC



US ROUTE 20 PLAN & PROFILE
 STA 1914+41 TO STA 1920+00

PLAN	DATE
BY	
REVIEWED	
DATE	
NO. OF MAY CHECKS	
CAD FILE NAME	

PROFILE	DATE
BY	
REVIEWED	
DATE	
NO. OF MAY CHECKS	
STRUCTURE NOTATION CHKD	