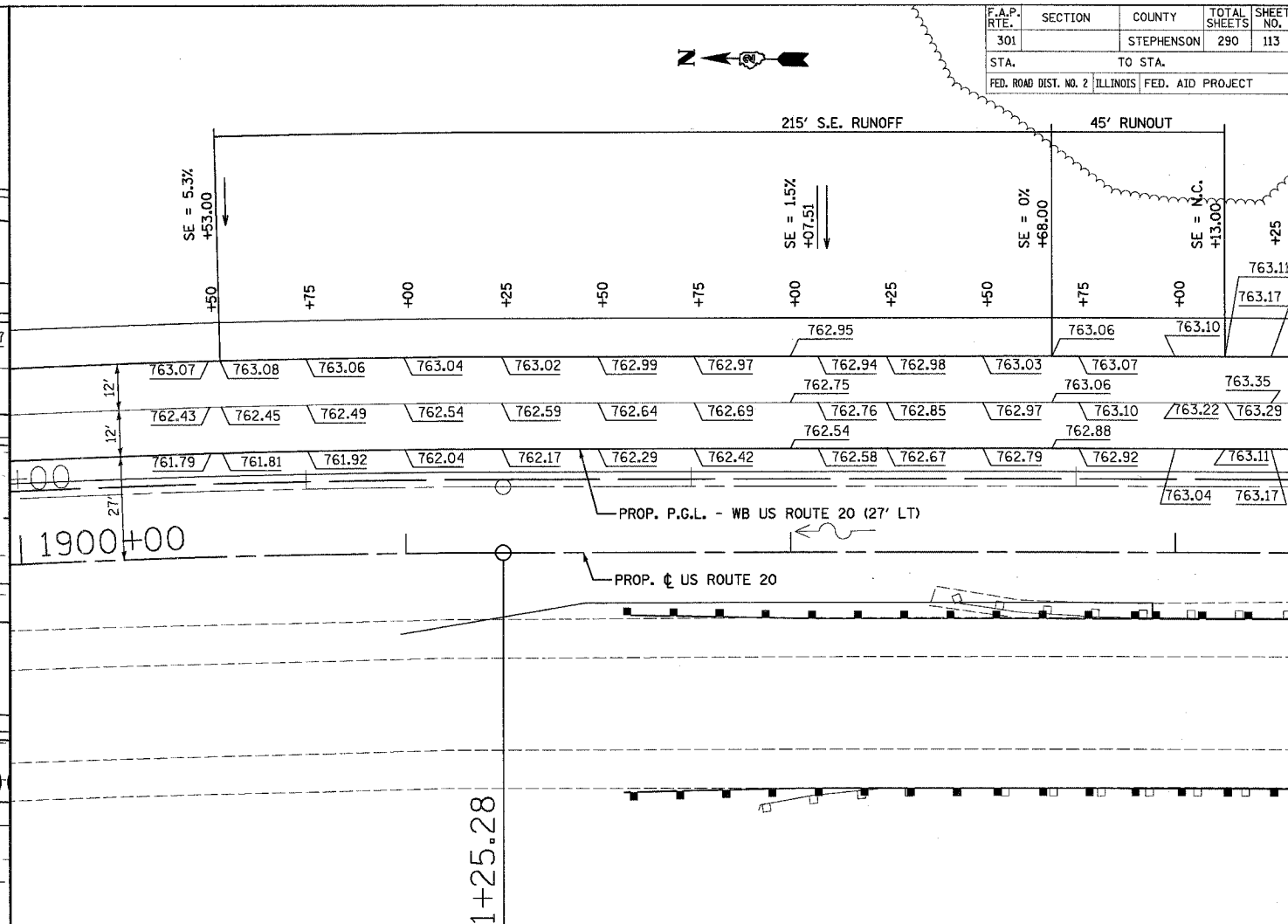
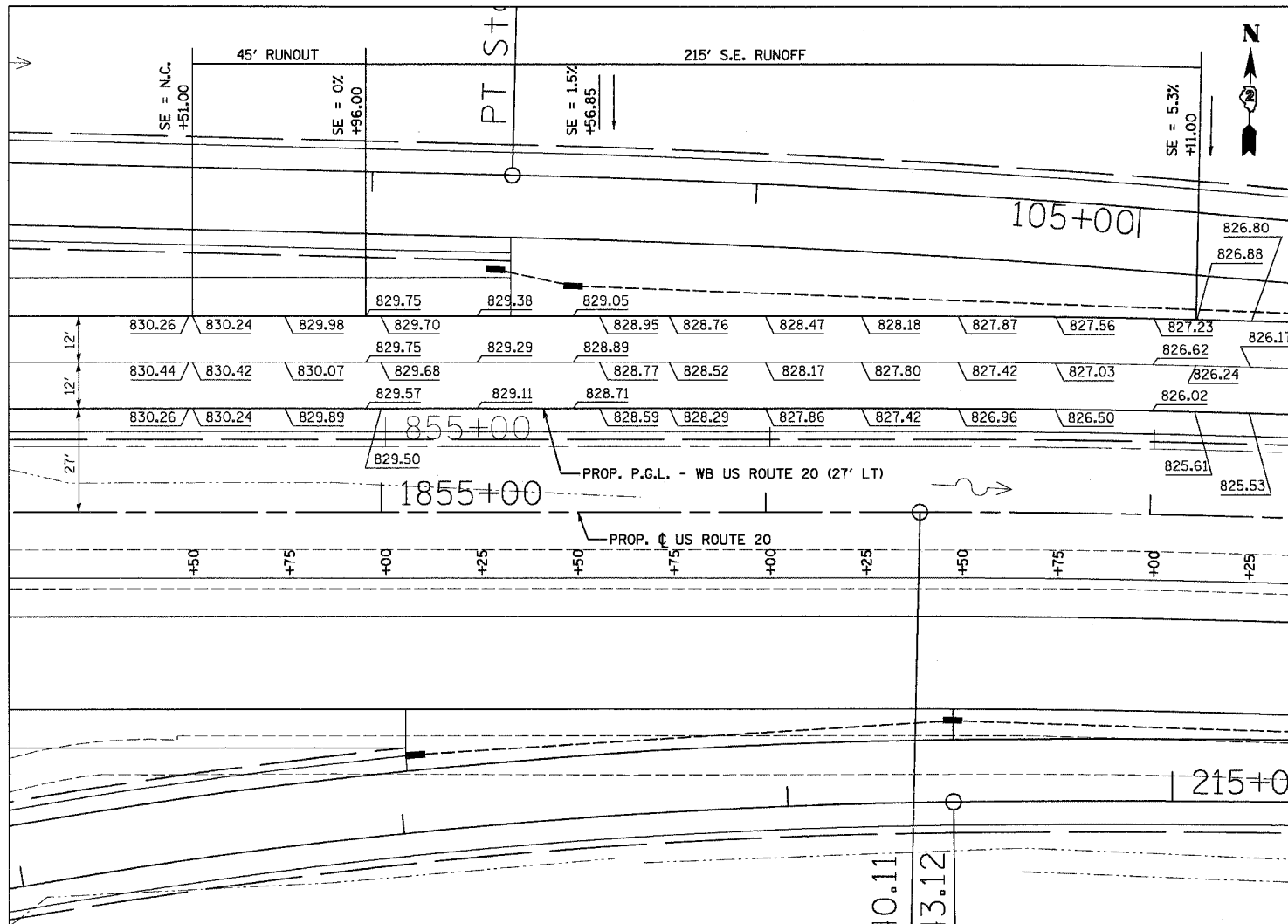


F.A.P. RTE.	SECTION	COUNTY	TOTAL SHEETS	SHEET NO.
301	STEPHENSON	290	113	
STA.	TO STA.			
FED. ROAD DIST. NO. 2 ILLINOIS FED. AID PROJECT				



SUPERELEVATION TRANSITION (WB) - CURVE 270A

STATION	OUTSIDE LANE CROSS SLOPE	INSIDE LANE CROSS SLOPE	OUTSIDE E.O.P. PAVT. ELEV. 51.00' LT.	WB CENTERLINE PAVT. ELEV. 39.00' LT.	INSIDE E.O.P. (PGL) PAVT. ELEV. 27.00' LT.	REMARKS
1854+50.00	-0.0150	0.0150	830.26	830.44	830.26	
1854+51.00	-0.0150	0.0150	830.24	830.42	830.24	BEGIN (NC)
1854+75.00	-0.0070	0.0150	829.98	830.07	829.89	
1854+96.00	0.0000	0.0150	829.75	829.75	829.57	0% SE
1855+00.00	0.0010	0.0150	829.70	829.68	829.50	
1855+25.00	0.0071	0.0150	829.38	829.29	829.11	
1855+50.00	0.0133	0.0150	829.05	828.89	828.71	
1855+56.85	0.0150	0.0150	828.95	828.77	828.59	POINT C (1.5% SE)
1855+75.00	0.0195	0.0195	828.76	828.52	828.29	
1856+00.00	0.0256	0.0256	828.47	828.17	827.86	
1856+25.00	0.0318	0.0318	828.18	827.80	827.42	
1856+40.11	0.0355	0.0355	828.00	827.57	827.14	PC (2/3 e)
1856+50.00	0.0380	0.0380	827.87	827.42	826.96	
1856+75.00	0.0441	0.0441	827.56	827.03	826.50	
1857+00.00	0.0503	0.0503	827.23	826.62	826.02	
1857+11.00	0.0530	0.0530	826.88	826.24	825.61	END (FULL SE; SE = e)
1857+25.00	0.0530	0.0530	826.80	826.17	825.53	

SUPERELEVATION TRANSITION (WB) - CURVE 270A

STATION	OUTSIDE LANE CROSS SLOPE	INSIDE LANE CROSS SLOPE	OUTSIDE E.O.P. PAVT. ELEV. 51.00' LT.	WB CENTERLINE PAVT. ELEV. 39.00' LT.	INSIDE E.O.P. (PGL) PAVT. ELEV. 27.00' LT.	REMARKS
1900+50.00	0.0530	0.0530	763.07	762.43	761.79	
1900+53.00	0.0530	0.0530	763.08	762.45	761.81	BEGIN (FULL SE; SE = e)
1900+75.00	0.0476	0.0476	763.06	762.49	761.92	
1901+00.00	0.0414	0.0414	763.04	762.54	762.04	
1901+25.00	0.0353	0.0353	763.02	762.59	762.17	
1901+25.28	0.0352	0.0352	763.02	762.59	762.17	PT (2/3 e)
1901+50.00	0.0291	0.0291	762.99	762.64	762.29	
1901+75.00	0.0229	0.0229	762.97	762.69	762.42	
1902+00.00	0.0168	0.0168	762.95	762.75	762.54	
1902+07.15	0.0150	0.0150	762.94	762.76	762.58	POINT C (1.5% SE)
1902+25.00	0.0106	0.0150	762.98	762.85	762.67	
1902+50.00	0.0044	0.0150	763.03	762.97	762.79	
1902+68.00	0.0000	0.0150	763.06	763.06	762.88	0% SE
1902+75.00	-0.0023	0.0150	763.07	763.10	762.92	
1903+00.00	-0.0107	0.0150	763.10	763.22	763.04	
1903+13.00	-0.0150	0.0150	763.11	763.29	763.11	END (NC)
1903+25.00	-0.0150	0.0150	763.17	763.35	763.17	

REVISIONS	
NAME	DATE

ILLINOIS DEPARTMENT OF TRANSPORTATION

**PAVEMENT ELEVATIONS  
US ROUTE 20 (WB)  
SUPERELEVATION TRANSITION**

SCALE: VERT. 1" = 20'  
HORIZ. 1" = 20'  
DATE 7/15/05

DRAWN BY MPK  
CHECKED BY JLC