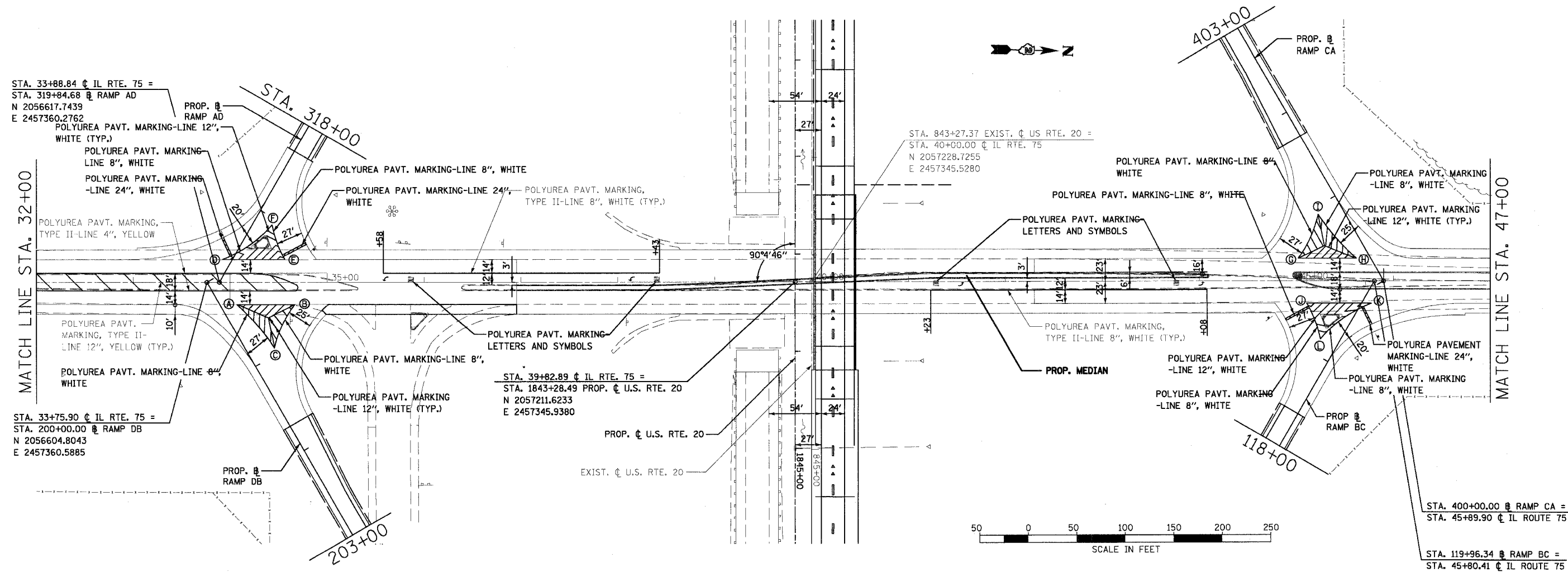


CONTRACT NO. 64577				
F.A.P. RTE.	SECTION	COUNTY	TOTAL SHEETS	SHEET NO.
301		STEPHENSON	290	116
STA.		TO STA.		
FED. ROAD DIST. NO. 2 ILLINOIS FED. AID PROJECT				



STA. 33+88.84 ϕ IL RTE. 75 =
 STA. 319+84.68 ϕ RAMP AD
 N 2056617.7439
 E 2457360.2762

STA. 33+75.90 ϕ IL RTE. 75 =
 STA. 200+00.00 ϕ RAMP DB
 N 2056604.8043
 E 2457360.5885

STA. 39+82.89 ϕ IL RTE. 75 =
 STA. 1843+28.49 PROP. ϕ U.S. RTE. 20
 N 2057211.6233
 E 2457345.9380

STA. 843+27.37 EXIST. ϕ U.S. RTE. 20 =
 STA. 40+00.00 ϕ IL RTE. 75
 N 2057228.7255
 E 2457345.5280

STA. 400+00.00 ϕ RAMP CA =
 STA. 45+89.90 ϕ IL ROUTE 75

STA. 119+96.34 ϕ RAMP BC =
 STA. 45+80.41 ϕ IL ROUTE 75

IL. RTE. 75 STATIONS, OFFSETS

- Ⓐ STA. 34+06.81, 23.00' RT
- Ⓑ STA. 34+66.52, 23.00' RT
- Ⓒ STA. 34+45.60, 67.60' RT
- Ⓓ STA. 33+91.94, 23.00' LT
- Ⓔ STA. 34+56.39, 23.00' LT
- Ⓕ STA. 34+43.19, 58.46' LT
- Ⓖ STA. 45+01.79, 23.00' LT
- Ⓗ STA. 45+62.02, 23.00' LT
- Ⓙ STA. 45+22.33, 68.00' LT
- Ⓚ STA. 45+10.55, 23.00' RT
- Ⓛ STA. 45+77.31, 23.00' RT
- Ⓜ STA. 45+24.58, 60.20' RT

REVISIONS		ILLINOIS DEPARTMENT OF TRANSPORTATION
NAME	DATE	
		PAVEMENT MARKING PLAN - IL. ROUTE 75

SCALE: VERT. 1"=50'
 HORIZ. 1"=50'
 DATE 7/15/05

DRAWN BY JJS
 CHECKED BY AT