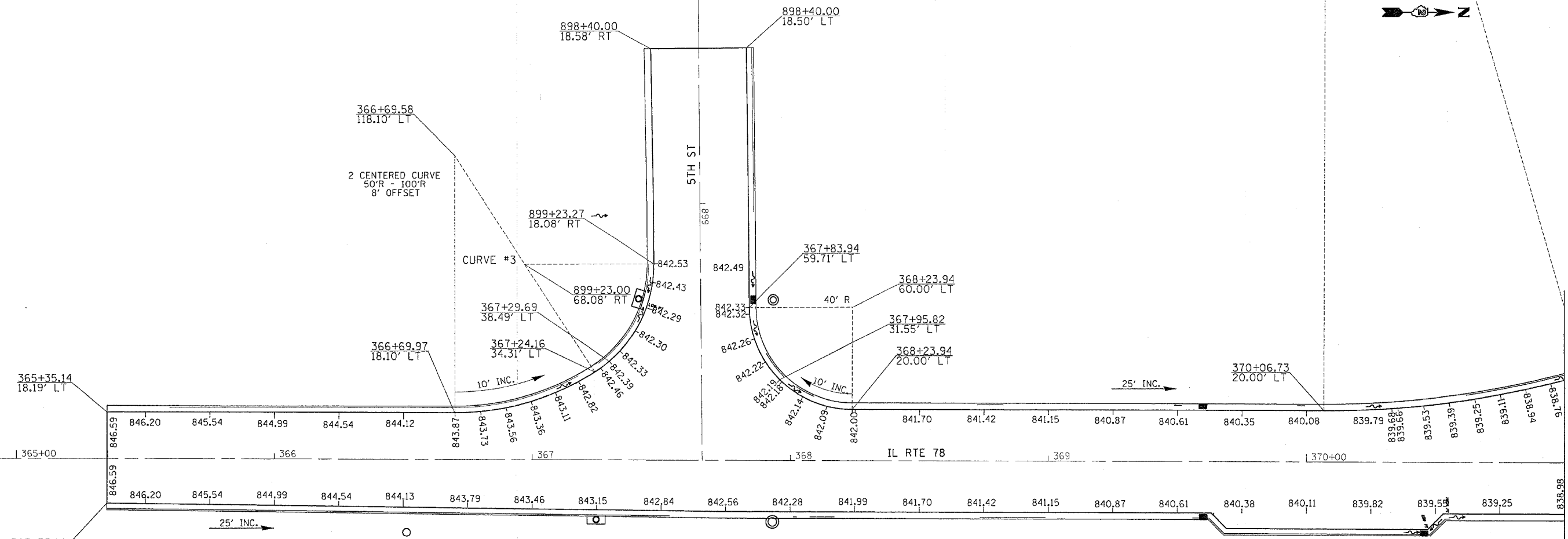


# PAVEMENT ELEVATIONS

F.A. P. RTE.	SECTION	COUNTY	TOTAL SHEETS	SHEET NO.
22	6M & T5	HENRY	257	84
STA.		TO STA.		
FED. ROAD DIST. NO.		ILLINOIS	FED. AID PROJECT	

370+06.73  
380.00' LT

2 CENTERED CURVE  
60'R - 360'R  
12' OFFSET



PLOT DATE = Thu Oct 27 09:34:44 2005  
 PLOT SCALE = 20.0000' / IN.  
 REFERENCE = REF'S

CONTRACTOR SHALL ADJUST GUTTER TRANSITION LENGTHS FOR INLET SPECIAL NO. 1'S OR 5'S TO INTERCEPT LOW POINTS. COST INCLUDED IN INLET SPECIAL NO. 1 OR NO. 5

REVISIONS	
NAME	DATE

ILLINOIS DEPARTMENT OF TRANSPORTATION

SCALE: VERT. \_\_\_\_\_  
 HORIZ. \_\_\_\_\_  
 DATE \_\_\_\_\_

DRAWN BY \_\_\_\_\_  
 CHECKED BY \_\_\_\_\_

## PAVEMENT ELEVATIONS