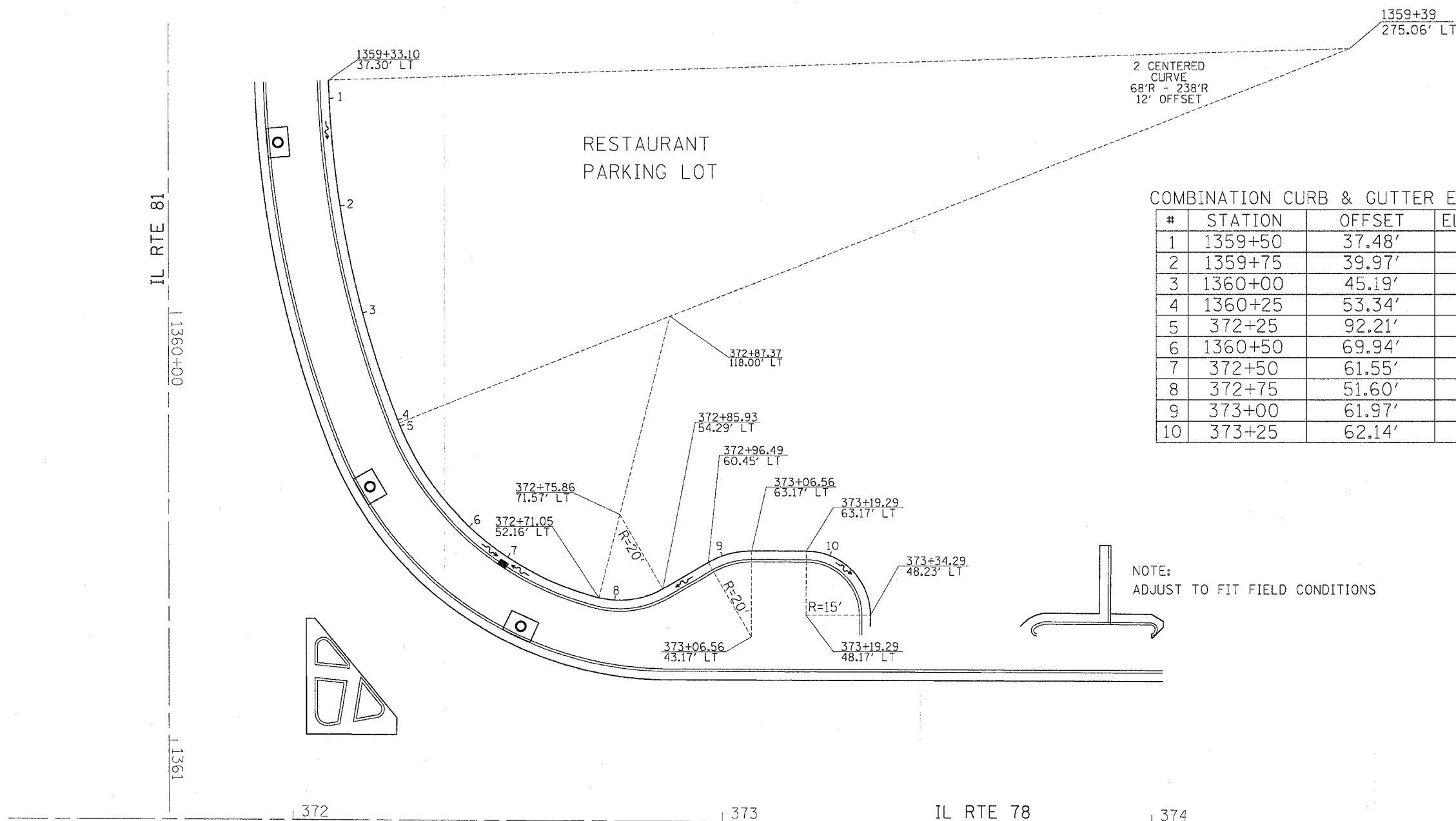


F.A.R. RTE.	SECTION	COUNTY	TOTAL SHEETS	SHEET NO.
22	6M & TS	HERNY	257	87
STA.		TO STA.		
FED. ROAD DIST. NO.		ILLINOIS FED. AID PROJECT		

PAVEMENT ELEVATIONS

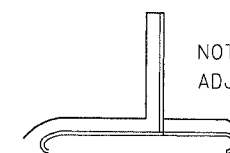
(NW QUAD OF IL 81 & IL 78)



COMBINATION CURB & GUTTER ELEVATIONS

#	STATION	OFFSET	ELEVATION
1	1359+50	37.48'	839.40
2	1359+75	39.97'	838.98
3	1360+00	45.19'	838.66
4	1360+25	53.34'	838.48
5	372+25	92.21'	838.46
6	1360+50	69.94'	838.36
7	372+50	61.55'	838.32
8	372+75	51.60'	838.57
9	373+00	61.97'	838.93
10	373+25	62.14'	838.39

NOTE:
ADJUST TO FIT FIELD CONDITIONS



PLOT DATE = Thu Oct 27 09:34:05 2005
 FILE NAME = c:\projects\12181800\12181800.dgn
 PLOT SCALE = 1/8" = 1'-0"
 REFERENCE = 4REFS

CONTRACTOR SHALL ADJUST GUTTER TRANSITION LENGTHS FOR INLET SPECIAL NO. 1'S OR 5'S TO INTERCEPT LOW POINTS. COST INCLUDED IN INLET SPECIAL NO. 1 OR NO. 5

REVISIONS	
NAME	DATE

ILLINOIS DEPARTMENT OF TRANSPORTATION

SCALE: VERT.
HORIZ.
DATE

DRAWN BY
CHECKED BY

PAVEMENT ELEVATIONS