

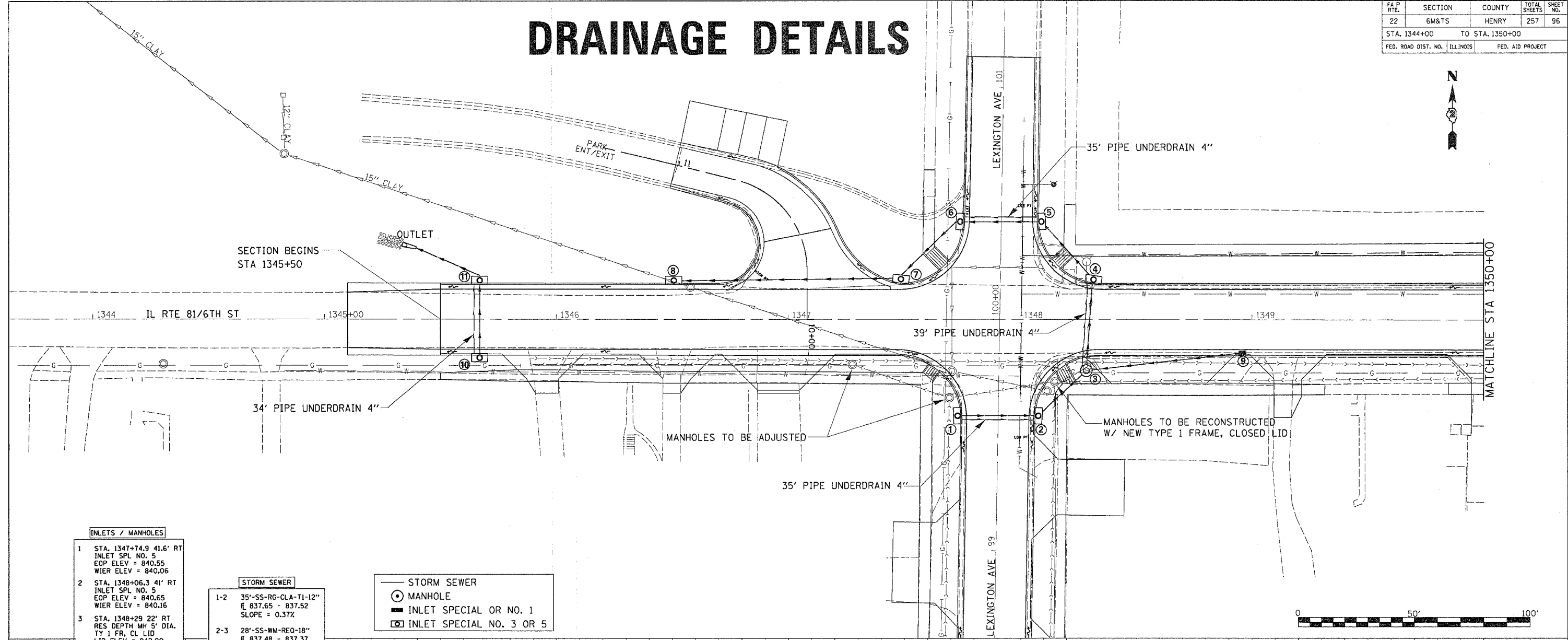
DRAINAGE DETAILS

FA P. RTE.	SECTION	COUNTY	TOTAL SHEETS	SHEET NO.
22	6M&TS	HENRY	257	96
STA. 1344+00		TO STA. 1350+00		
FED. ROAD DIST. NO.	ILLINOIS	FED. AID PROJECT		



PLAN	DATE	BY
NO.		
NO.		
NO.		
NO.		

PROFILE	DATE	BY
NO.		
NO.		
NO.		
NO.		



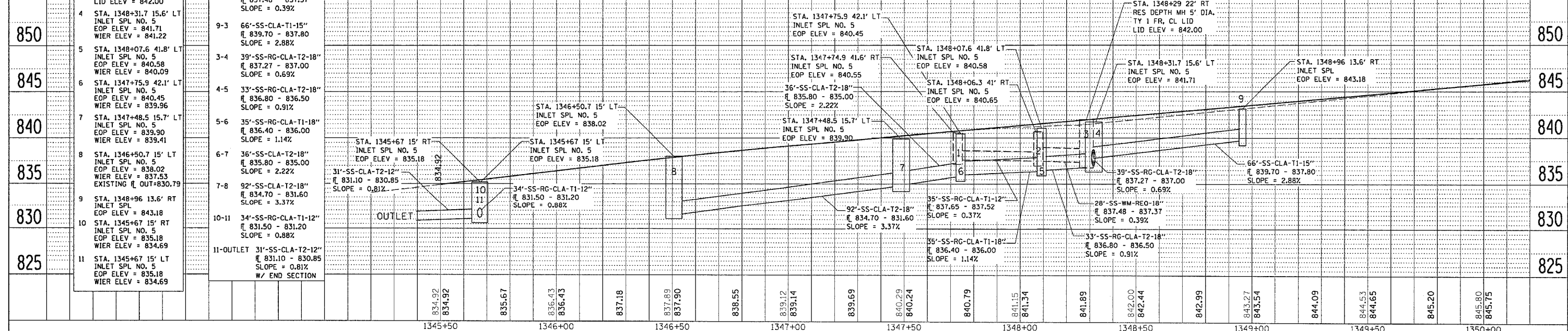
INLETS / MANHOLES

1	STA. 1347+74.9 41.6' RT INLET SPL NO. 5 EOP ELEV = 840.55 WIER ELEV = 840.06
2	STA. 1348+06.3 41' RT INLET SPL NO. 5 EOP ELEV = 840.65 WIER ELEV = 840.16
3	STA. 1348+29 22' RT RES DEPTH MH 5' DIA. TY 1 FR, CL LID LID ELEV = 842.00
4	STA. 1348+31.7 15.6' LT INLET SPL NO. 5 EOP ELEV = 841.71 WIER ELEV = 841.22
5	STA. 1348+07.6 41.8' LT INLET SPL NO. 5 EOP ELEV = 840.58 WIER ELEV = 840.09
6	STA. 1347+75.9 42.1' LT INLET SPL NO. 5 EOP ELEV = 840.45 WIER ELEV = 839.96
7	STA. 1347+48.5 15.7' LT INLET SPL NO. 5 EOP ELEV = 839.90 WIER ELEV = 839.41
8	STA. 1346+50.7 15' LT INLET SPL NO. 5 EOP ELEV = 838.02 WIER ELEV = 837.53 EXISTING ∇ OUT=830.79
9	STA. 1348+96 13.6' RT INLET SPL NO. 5 EOP ELEV = 843.18
10	STA. 1345+67 15' RT INLET SPL NO. 5 EOP ELEV = 835.18 WIER ELEV = 834.69
11	STA. 1345+67 15' LT INLET SPL NO. 5 EOP ELEV = 835.18 WIER ELEV = 834.69

STORM SEWER

1-2	35'-SS-RG-CLA-TI-12" ∇ 837.65 - 837.52 SLOPE = 0.37%
2-3	28'-SS-WM-REQ-18" ∇ 837.48 - 837.37 SLOPE = 0.39%
3-4	66'-SS-CLA-TI-15" ∇ 839.70 - 837.80 SLOPE = 2.88%
4-5	33'-SS-RG-CLA-T2-18" ∇ 837.27 - 837.00 SLOPE = 0.69%
5-6	35'-SS-RG-CLA-T1-18" ∇ 836.80 - 836.50 SLOPE = 0.91%
6-7	36'-SS-CLA-T2-18" ∇ 835.80 - 835.00 SLOPE = 2.22%
7-8	92'-SS-CLA-T2-18" ∇ 834.70 - 831.60 SLOPE = 3.37%
10-11	34'-SS-RG-CLA-T1-12" ∇ 831.50 - 831.20 SLOPE = 0.88%
11-OUTLET	31'-SS-CLA-T2-12" ∇ 831.10 - 830.85 SLOPE = 0.81% W/ END SECTION

— STORM SEWER
 ○ MANHOLE
 ■ INLET SPECIAL OR NO. 1
 □ INLET SPECIAL NO. 3 OR 5



DATE-TIME*
 ORIG-SPC
 ORIG-REF
 ORIG-REF