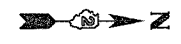


DRAINAGE DETAILS

FA P. NO.	SECTION	COUNTY	TOTAL SHEETS	SHEET NO.
22	6M&T5	HENRY	257	102
STA. 374+00		TO STA. 380+00		
FED. ROAD DIST. NO.	ILLINOIS	FED. AID PROJECT		

PLAN	DATE
NO.	BY
NO.	BY
NO.	BY
NO.	BY
NO.	BY

PROFILE	DATE
NO.	BY
NO.	BY
NO.	BY
NO.	BY
NO.	BY



CONTRACTOR SHALL LOCATE EXISTING STORM SEWER AND ADJUST INLET OFFSET TO INTERCEPT STORM SEWER AND TRANSITION CC & G ACCORDINGLY.

SECTION & IMPROVEMENT ENDS STA 377+80

MANHOLES TO BE ADJUSTED

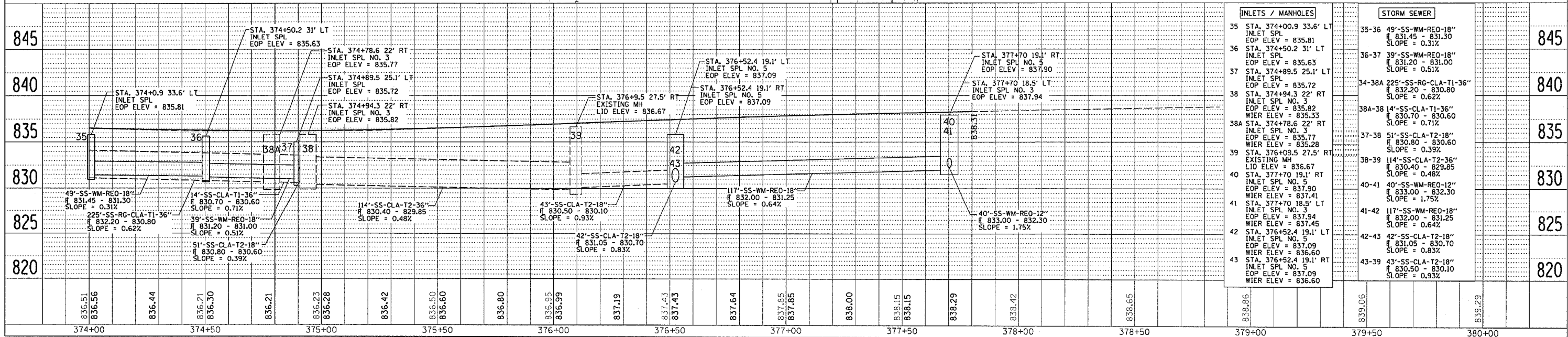
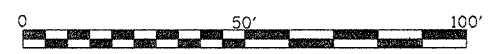
MATCHLINE STA 374+00

51" PIPE UNDERDRAIN 4"

IL RTE 78

7TH ST

- STORM SEWER
- MANHOLE
- INLET SPECIAL OR NO. 1
- ◻ INLET SPECIAL NO. 3 OR 5



INLETS / MANHOLES		STORM SEWER		
35	STA. 374+00.9 33.6' LT INLET SPL EOP ELEV = 835.81	35-36	49"-SS-WM-REO-18" # 831.45 - 831.30 SLOPE = 0.31%	845
36	STA. 374+50.2 31' LT INLET SPL EOP ELEV = 835.63	36-37	39"-SS-WM-REO-18" # 831.20 - 831.00 SLOPE = 0.51%	840
37	STA. 374+89.5 25.1' LT INLET SPL EOP ELEV = 835.72	34-38A	225"-SS-RG-CLA-T1-36" # 832.20 - 830.80 SLOPE = 0.62%	840
38	STA. 374+94.3 22' RT INLET SPL NO. 3 EOP ELEV = 835.82	38A-38	14"-SS-CLA-T1-36" # 830.70 - 830.60 SLOPE = 0.71%	835
38A	STA. 374+78.6 22' RT INLET SPL NO. 3 EOP ELEV = 835.77	37-38	51"-SS-CLA-T2-18" # 830.80 - 830.60 SLOPE = 0.39%	835
38B	STA. 374+94.3 22' RT INLET SPL NO. 3 EOP ELEV = 835.82	38-39	114"-SS-CLA-T2-36" # 830.40 - 829.85 SLOPE = 0.48%	830
39	STA. 376+09.5 27.5' RT EXISTING MH LID ELEV = 836.67	40-41	40"-SS-WM-REO-12" # 833.00 - 832.30 SLOPE = 1.75%	825
40	STA. 377+70 19.1' RT INLET SPL NO. 5 EOP ELEV = 837.90	41-42	117"-SS-WM-REO-18" # 832.00 - 831.25 SLOPE = 0.64%	825
41	STA. 377+70 18.5' LT INLET SPL NO. 3 EOP ELEV = 837.94	42-43	42"-SS-CLA-T2-18" # 831.05 - 830.70 SLOPE = 0.83%	820
42	STA. 376+52.4 19.1' LT INLET SPL NO. 5 EOP ELEV = 837.09	43-39	43"-SS-CLA-T2-18" # 830.50 - 830.10 SLOPE = 0.93%	820
43	STA. 376+52.4 19.1' RT INLET SPL NO. 5 EOP ELEV = 837.09			

DATE-TIME
-CON-SPEC
-REF
-REF
-REF