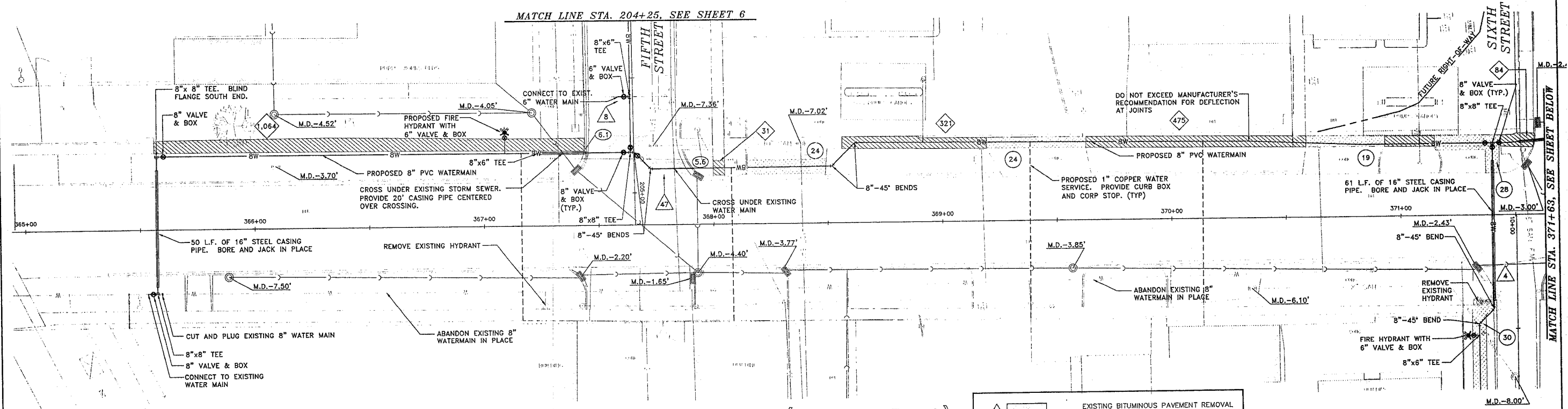
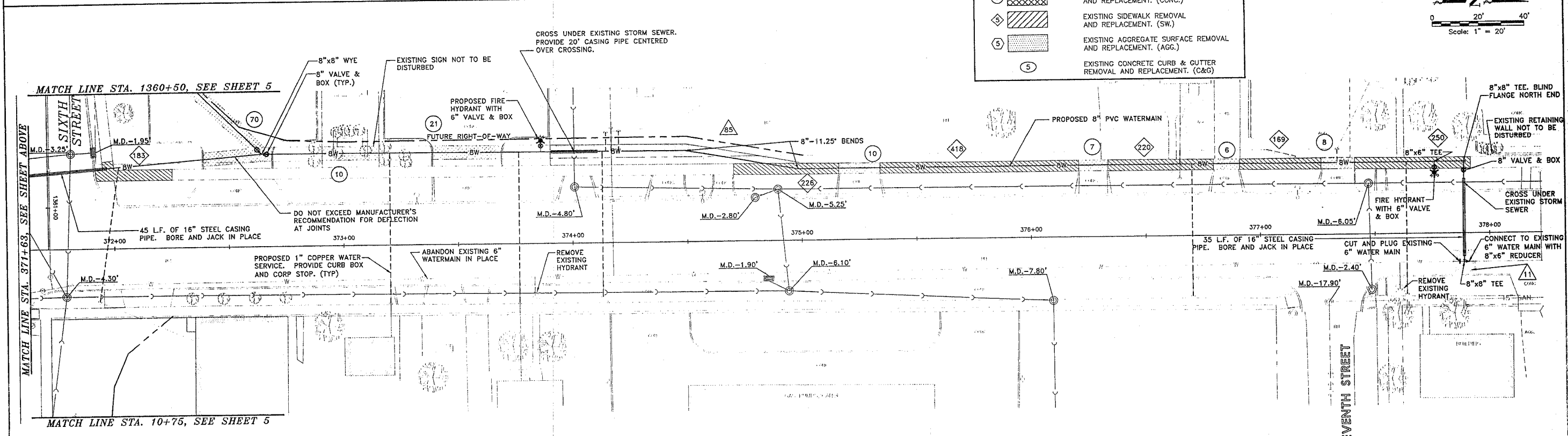
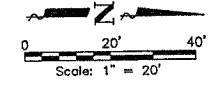


F.A.P. RY.	SECTION	COUNTY	TOTAL SHEETS	SHEET NO.
22	6M&T5	HENRY	257	121
STA.		TO STA.		
FED. ROAD DIST. NO.		ILLINOIS FED. AID PROJECT		



MAIN STREET (IL ROUTE 78)

	EXISTING BITUMINOUS PAVEMENT REMOVAL AND REPLACEMENT. (BIT.)
	EXISTING PC CONCRETE PAVEMENT REMOVAL AND REPLACEMENT. (CONC.)
	EXISTING SIDEWALK REMOVAL AND REPLACEMENT. (SW.)
	EXISTING AGGREGATE SURFACE REMOVAL AND REPLACEMENT. (AGG.)
	EXISTING CONCRETE CURB & GUTTER REMOVAL AND REPLACEMENT. (C&G)



MAIN STREET (IL ROUTE 78)

CITY OF KEWANEE  
401 East Third Street, Kewanee, IL 61443

REVISIONS		
NO.	ITEM	DATE
1	REVISED PER CLIENT COMMENTS	AUGUST 2005

PLOTTING SCALE: 1" = 20'  
DRAWN BY: BRS  
CHECKED BY:  
DATE: AUGUST 2005

**McCLURE ENGINEERING ASSOCIATES, INC.**  
4703 Kennedy Drive  
(309) 792-9350  
East Moline, Illinois 61224  
FAX (309) 792-3974  
Design Firm License: Illinois #184-000816  
Copyright 2005 by McClure Engineering Associates, Inc.

MAIN STREET (IL ROUTE 78)  
STA. 365+00 TO STA. 378+00  
6th Street & Main Street Water Main  
KEWANEE, ILLINOIS  
JOB NUMBER: 01-21-03-195  
FILE NAME: T:\KE103.195\dwg\03195MDL.dwg

SHEET NO.  
4  
OF 6