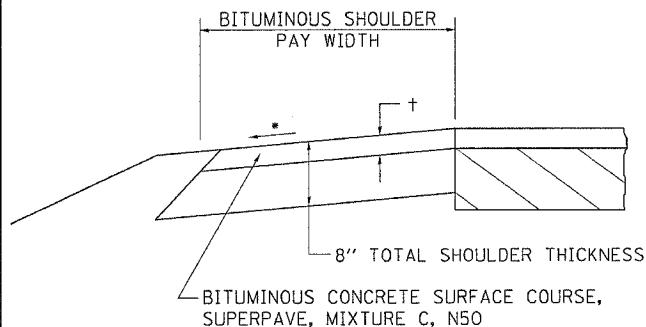


F.A.R. RTE.	SECTION	COUNTY	TOTAL SHEETS	SHEET NO.
22	6M & TS	HENRY	257	128
STA.	TO STA.			
FED. ROAD DIST. NO.	ILLINOIS	FED. AID PROJECT		

BITUMINOUS SHOULDER

GENERAL NOTES



THE BITUMINOUS SHOULDER SHALL BE CONSTRUCTED IN ACCORDANCE WITH SECTION 482 EXCEPT THE TOP LIFT SHALL BE BITUMINOUS CONCRETE SURFACE COURSE, SUPERPAVE, MIXTURE C, N50. THE WORK WILL BE PAID FOR AT THE CONTRACT UNIT PRICE PER TON FOR BITUMINOUS CONCRETE SURFACE COURSE, SUPERPAVE, MIXTURE C, N50, AND SQUARE YARD FOR BITUMINOUS SHOULDERS SUPERPAVE OF THE THICKNESS SPECIFIED.

USE BITUMINOUS CONCRETE SURFACE COURSE, SUPERPAVE, MIXTURE C, N50, WHEN RESURFACING EXISTING BITUMINOUS SHOULDERS. THE THICKNESS IS SHOWN ON THE TYPICAL SECTIONS. THIS WORK WILL BE PAID FOR AT THE CONTRACT UNIT PRICE PER TON FOR BITUMINOUS CONCRETE SURFACE COURSE, SUPERPAVE, MIXTURE C, N50.

REMOVAL OF MATERIAL FOR PLACEMENT OF THE BITUMINOUS SHOULDER TO BE PAID FOR IN UNITS FOR EXCAVATING AND GRADING EXISTING SHOULDERS OR IN CUBIC YARDS FOR EARTH EXCAVATION OR EARTH EXCAVATION WIDENING.

* 4% WHEN MAINLINE IS ON TANGENT. FOR CROSS SLOPE ON SUPERELEVATION SECTION, SEE HIGHWAY STANDARD 482001 OR 482006.

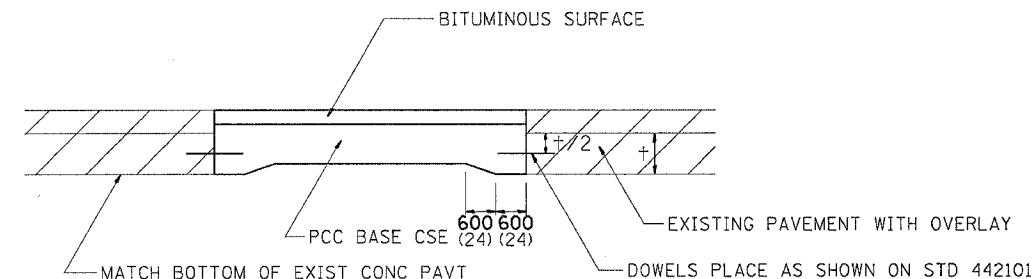
† = SEE TYPICAL SECTIONS FOR THICKNESS

ALL DIMENSIONS ARE IN MILLIMETERS (INCHES) UNLESS OTHERWISE NOTED.

BITUMINOUS SHOULDER 23.4a

REVISED 5-30-03

PORTLAND CEMENT CONCRETE BASE COURSE DETAIL



GENERAL NOTES

THE LONGITUDINAL JOINT & BASE COURSE SHALL BE CONSTRUCTED IN ACCORDANCE WITH STD 353001.

PAVEMENT FABRIC SHALL BE PLACED IN ACCORDANCE WITH STANDARD 420601.

THE BASE COURSE SHALL BE TIED TO THE EXISTING PAVEMENT AS SHOWN WITH DOWEL BARS AS SHOWN IN STANDARD 442101. THIS COST TO BE INCLUDED IN THE COST OF THE BASE COURSE.

ALL DIMENSIONS ARE IN MILLIMETERS (INCHES) UNLESS OTHERWISE STATED.

TABLE OF BARS

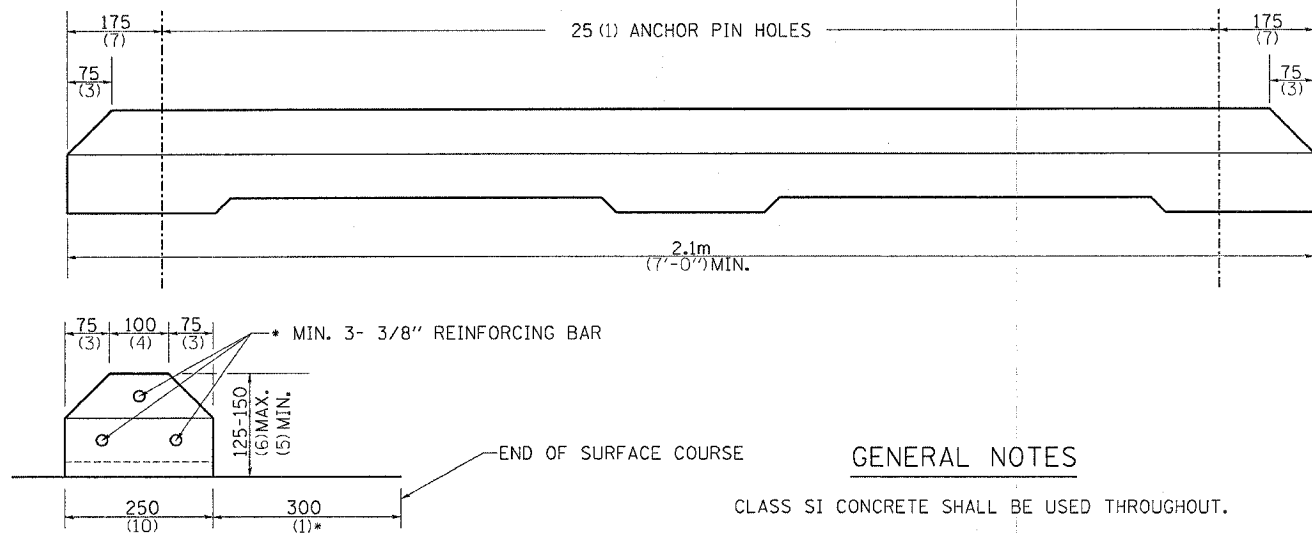
PAVEMENT THICKNESS	DOWEL BAR DIAMETER	HOLE DIAMETER
200 or greater (8)	38 (1 1/2)	41 (1 5/8)
180 thru 199 (7) (7.99)	32 (1 1/4)	35 (1 3/8)
Less than 180 (7)	25 (1)	29 (1 1/8)

10 BARS FOR 12' PAVEMENT
12 BARS FOR 14' PAVEMENT
14 BARS FOR 16' PAVEMENT

REVISED 1-27-00

24.4

PARKING BLOCKS



GENERAL NOTES

CLASS SI CONCRETE SHALL BE USED THROUGHOUT.

ANCHOR PINS SHALL BE 20 (3/4) DIAMETER, 900 (36) LONG.

THE COST OF THE MATERIAL, LABOR AND EQUIPMENT NECESSARY TO INSTALL THE PARKING BLOCKS WITH ANCHOR PINS SHALL BE INCLUDED IN THE CONTRACT UNIT PRICE PER EACH FOR PARKING BLOCKS.

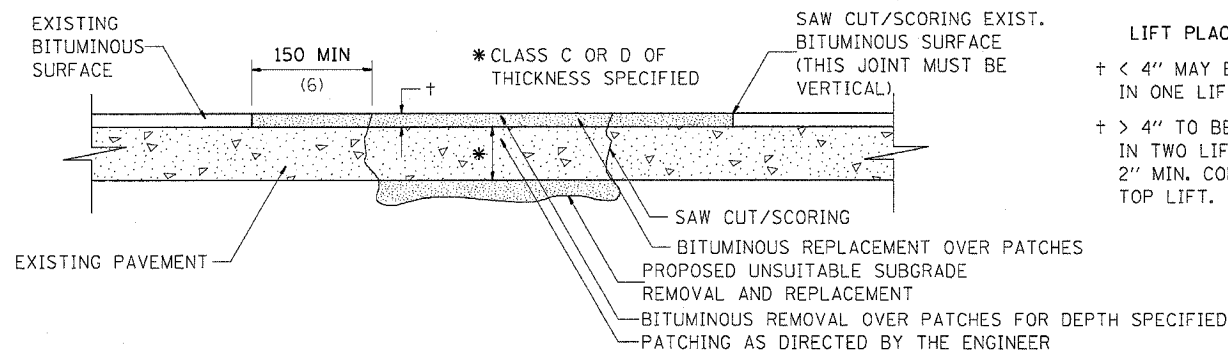
ALL DIMENSIONS ARE IN MILLIMETERS (INCHES) UNLESS OTHERWISE NOTED.

* OR AS DIRECTED BY THE ENGINEER.

PARKING BLOCKS 31.4

REVISED 8-5-96

PAVEMENT PATCHING FOR BITUMINOUS SURFACED PAVEMENT



LIFT PLACEMENT:
+ < 4" MAY BE PLACED IN ONE LIFT.
+ > 4" TO BE PLACED IN TWO LIFTS WITH 2" MIN. COMPACTED TOP LIFT.

SEQUENCE OF CONSTRUCTION:

1. REMOVE THE EXISTING BITUMINOUS SURFACE.
2. RESIDENT ENGINEER WILL DETERMINE IF LOCATION IS TO BE PATCHED OR TO ONLY REPLACE BITUMINOUS SURFACE.
3. REMOVE AND REPLACE FULL DEPTH PATCHES AT LOCATIONS DIRECTED BY THE ENGINEER.
4. REPLACE BITUMINOUS SURFACE OVER FULL DEPTH PATCHES AND AT LOCATIONS OF BITUMINOUS SURFACE REMOVAL.

GENERAL NOTES:

1. THE WIDTH OF THE FULL DEPTH PATCH OVER A TRENCH SHALL BE 300 (12) WIDER ON EACH SIDE OF THE TRENCH.
2. FOR BASIS OF PAYMENT: SEE SPECIAL PROVISION "PATCHING WITH BITUMINOUS OVERLAY REMOVAL".

ALL DIMENSIONS ARE IN MILLIMETERS (INCHES) UNLESS OTHERWISE NOTED

6-21-01

32.4