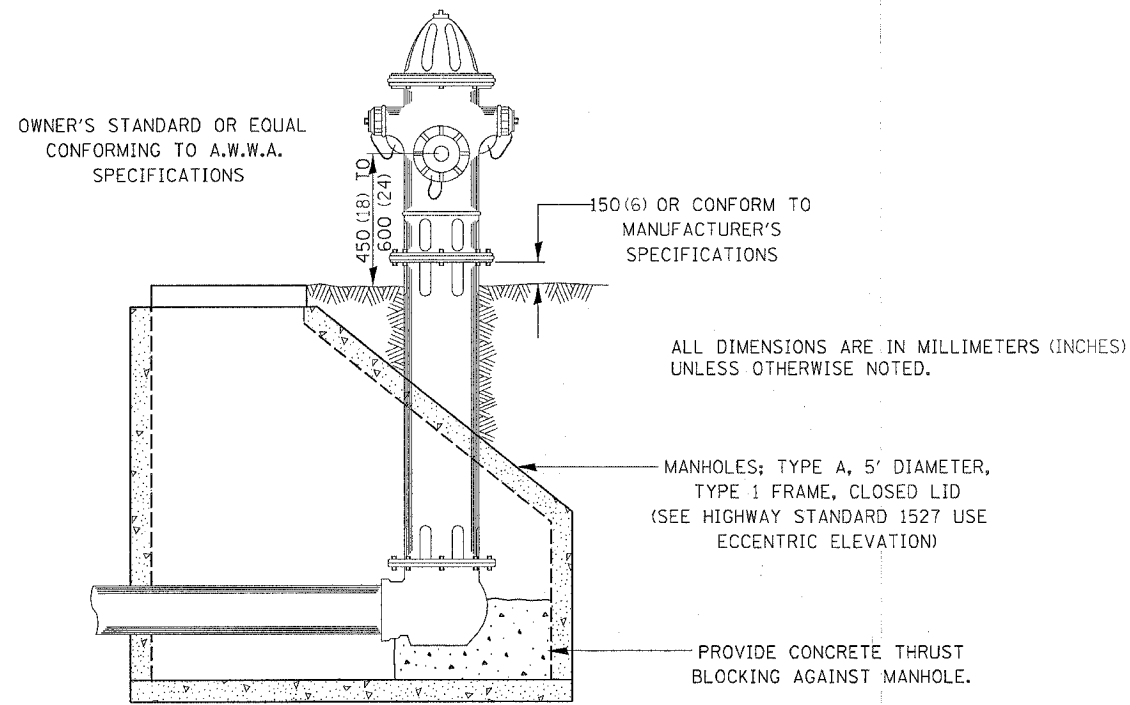


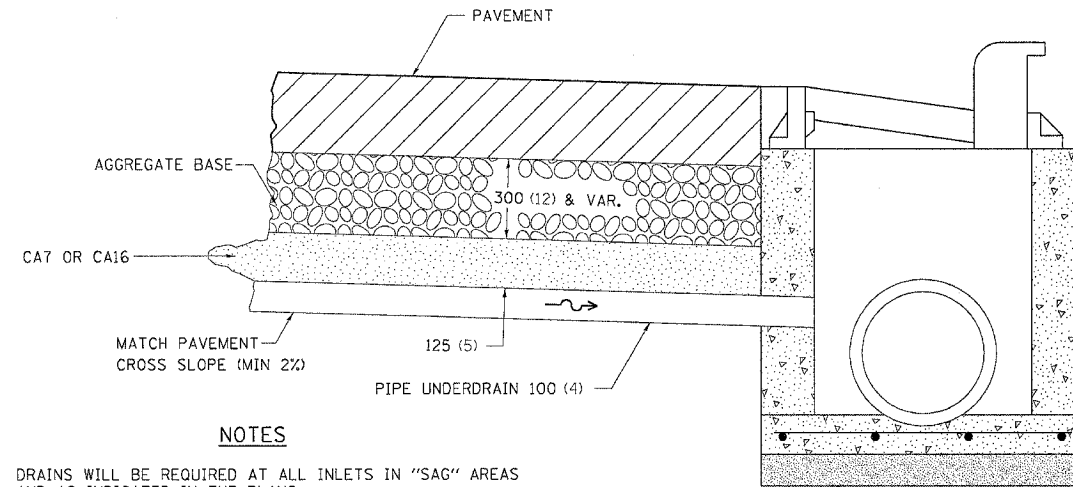
TYPICAL HYDRANT INSTALLATION



TYPICAL HYDRANT INSTALLATION 81.4

REVISED 1-8-96

DRAIN FOR AGGREGATE BASES IN URBAN AREAS



NOTES

DRAINS WILL BE REQUIRED AT ALL INLETS IN "SAG" AREAS AND AS INDICATED IN THE PLANS.

THIS WORK SHALL BE COMPLETED ACCORDING TO SECTION 601 OF THE STANDARD SPECIFICATIONS.

THIS WORK WILL BE PAID FOR AT THE CONTRACT UNIT PRICE PER METER (FOOT) FOR PIPE UNDERDRAINS OF THE DIAMETER SPECIFIED WHICH PRICE SHALL INCLUDE THE CA7 OR CA16 AND THE CONNECTION TO THE INLET.

ALL DIMENSIONS ARE IN MILLIMETERS (INCHES) UNLESS OTHERWISE NOTED.

DRAIN FOR AGGREGATE BASES IN URBAN AREAS 88.4

REVISED 4-7-99

TREE REPLACEMENT SCHEDULE

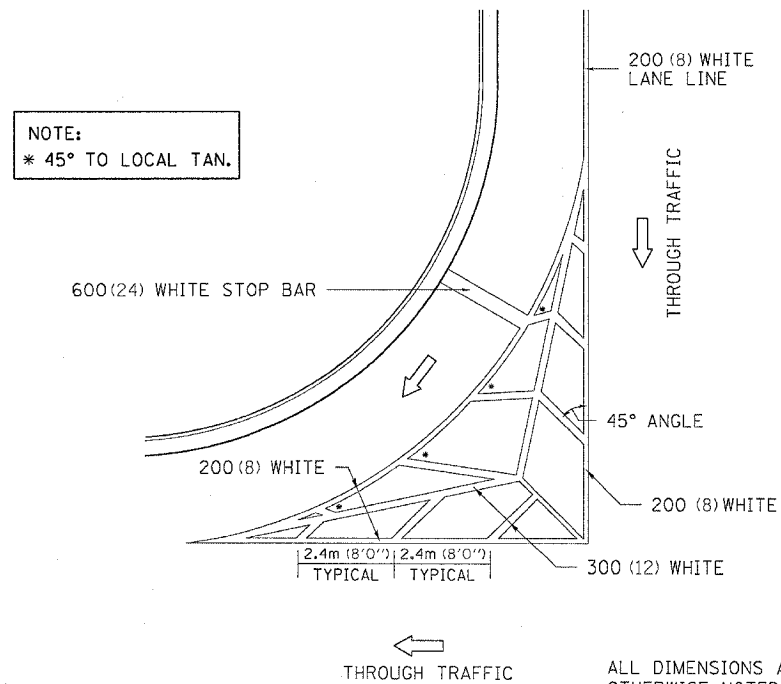
CODE NUMBER	SCIENTIFIC NAME	COMMON NAME	SIZE	UNIT	QUANTITY
A2001714	TREE - ACER SACCHARUM	SUGAR MAPLE	1 3/4" CALIPER, BALLED & BURLAPPED	EACH	5
A2007814	TREE - TILIA AMERICANA	AMERICAN LINDEN/ BASSWOOD	1 3/4" CALIPER, BALLED & BURLAPPED	EACH	4
B2002716	TREE - MALUS ADIRONDACK	ADIRONDACK CRABAPPLE	2" CALIPER, TREE FORM, BALLED & BURLAPPED	EACH	6

ALL DIMENSIONS ARE IN MILLIMETERS (INCHES) UNLESS OTHERWISE NOTED.

TREE REPLACEMENT SCHEDULE 90.4

REVISED 8-10-05

TYPICAL MARKING FOR PAINTED ISLANDS



ALL DIMENSIONS ARE IN MILLIMETERS (INCHES) UNLESS OTHERWISE NOTED.

TYPICAL MARKING FOR PAINTED ISLANDS 93.4

REVISED 2-7-05

Plot Date = Thu Oct 27 09:42:52 2005
Plot Scale = 50:1
Reference = #REF#