

F.A.S. RTE.	SECTION	COUNTY	TOTAL SHEETS	SHEET NO.
221	(19B-1) M	ROCK ISLAND	29	1

STATE OF ILLINOIS
DEPARTMENT OF TRANSPORTATION
DIVISION OF HIGHWAYS

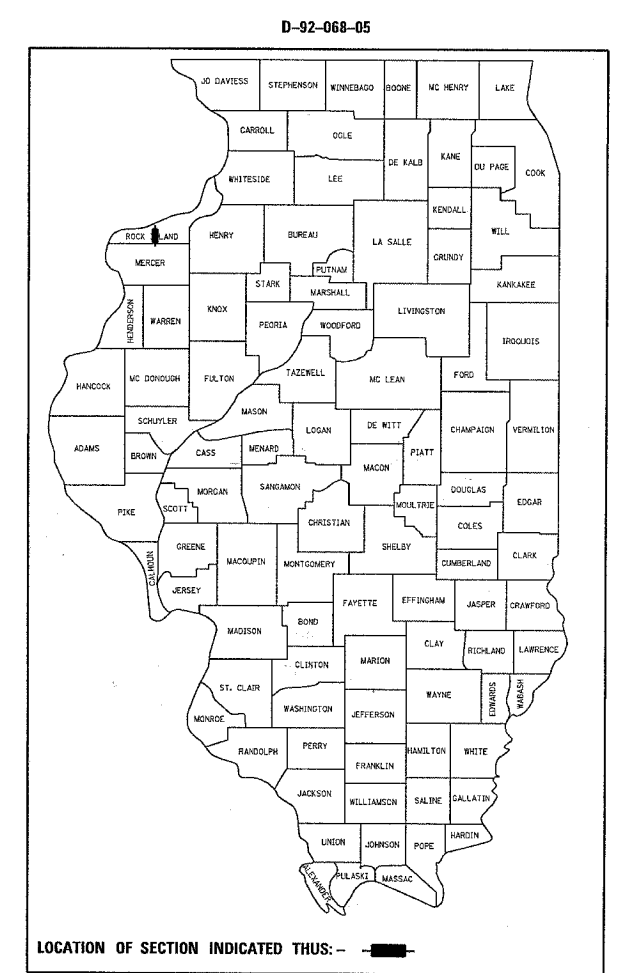
**PROPOSED
HIGHWAY PLANS**

FAS ROUTE 221 (IL94)
SECTION (19B-1) M
PROJECT BHS- 221(105)
ROCK ISLAND COUNTY
C-92-022-06

FOR INDEX OF SHEETS, SEE SHEET NO. 2
FOR STATE STANDARDS, SEE SHEET NO. 2

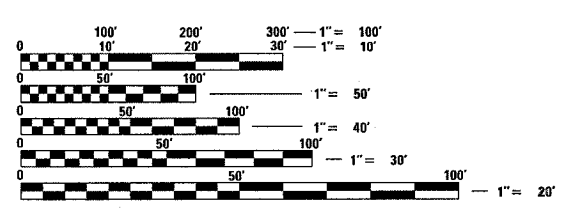
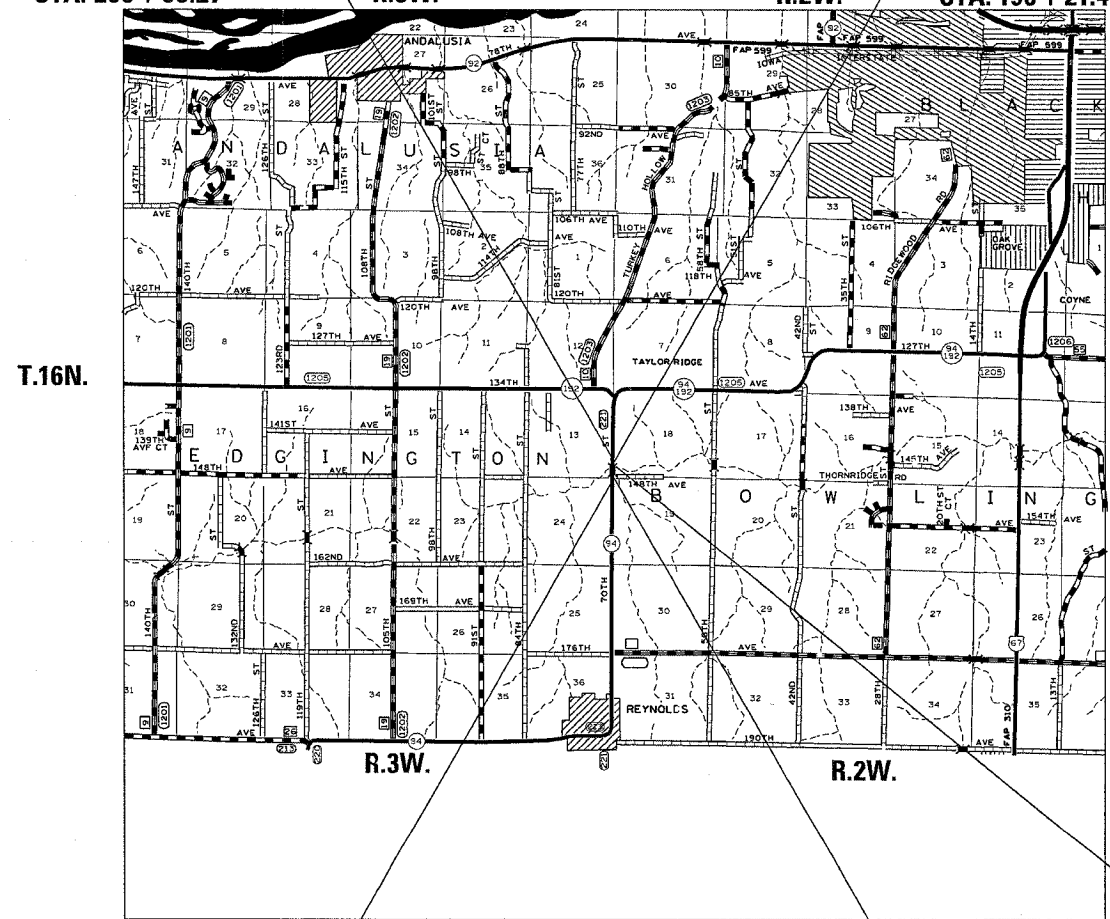
PROJECT ENGINEER: BOB WAGNER

SENIOR SQUAD LEADER: SAMEER ABDULLAH (815) 284-5935



EDGINGTON TOWNSHIP SECTION 13 & 24
BOWLING TOWNSHIP SECTION 18 & 19

IMPROVEMENT ENDS STA. 200 + 90.27 R.3W. R.2W. SECTION ENDS STA. 198 + 21.48



FULL SIZE PLANS HAVE BEEN PREPARED USING STANDARD ENGINEERING SCALES. REDUCED SIZED PLANS WILL NOT CONFORM TO STANDARD SCALES. IN MAKING MEASUREMENTS ON REDUCED PLANS, THE ABOVE SCALES MAY BE USED.

J.U.L.I.E.
JOINT UTILITY LOCATION INFORMATION FOR EXCAVATION
1-800-892-0123

IMPROVEMENT BEGINS STA. 195 + 06.13 SECTION BEGINS STA. 195 + 88.11

NET LENGTH OF PROJECT = 233.37 LIN. FT = 0.044 MILES
GROSS LENGTH OF PROJECT = 233.37 LIN. FT = 0.044 MILES

STATE OF ILLINOIS
DEPARTMENT OF TRANSPORTATION
DIVISION OF HIGHWAYS

SUBMITTED October 26, 20 05

Sheepy L. Monte
DEPUTY DIRECTOR OF HIGHWAYS, REGION ENGINEER

December 9, 20 05
Mike Hine
ENGINEER OF DESIGN AND ENVIRONMENT

December 9, 20 05
Eric Harn
DEPUTY DIRECTOR OF HIGHWAYS, CHIEF ENGINEER

**PRINTED BY THE AUTHORITY
OF THE STATE OF ILLINOIS**

CONTRACT NO. 64B06