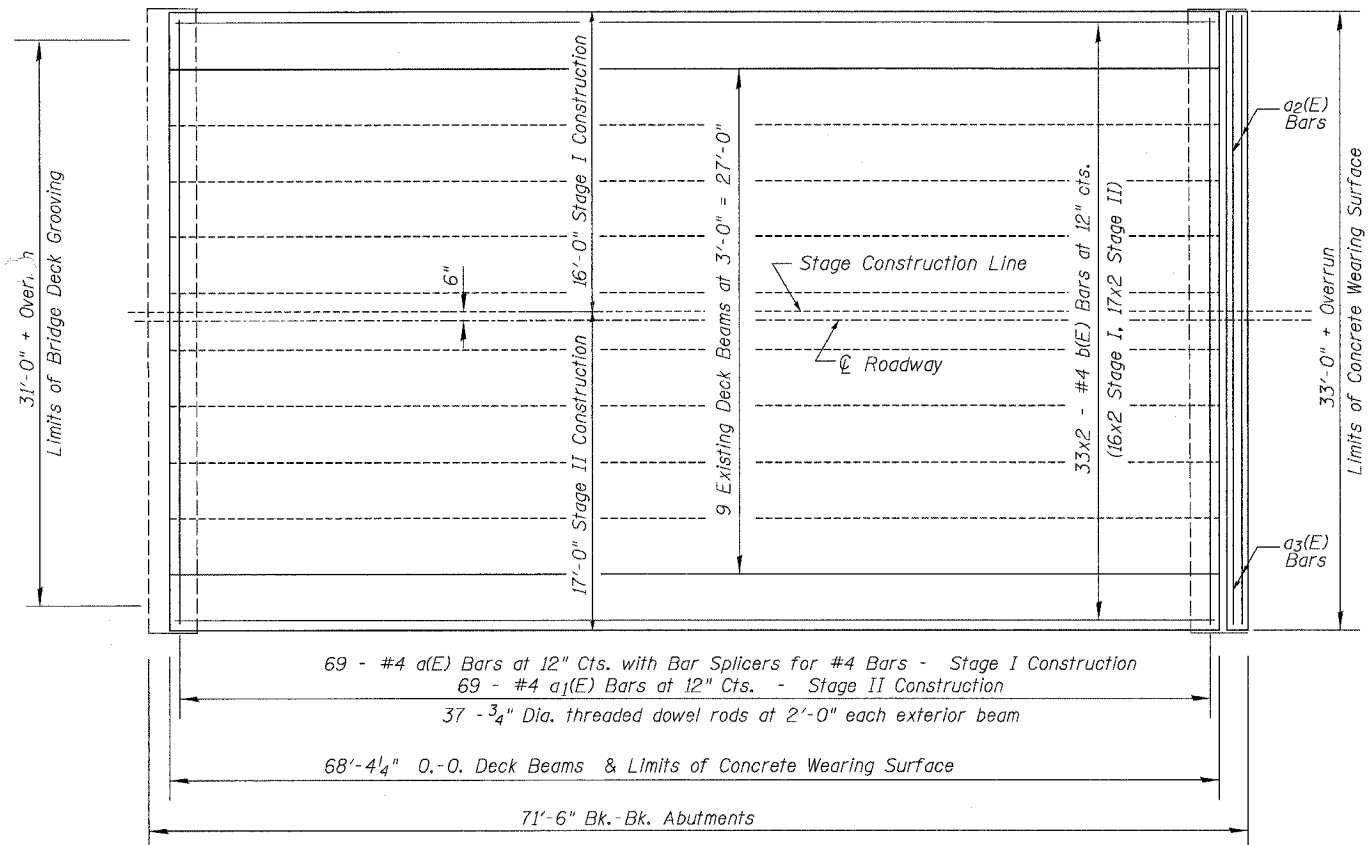


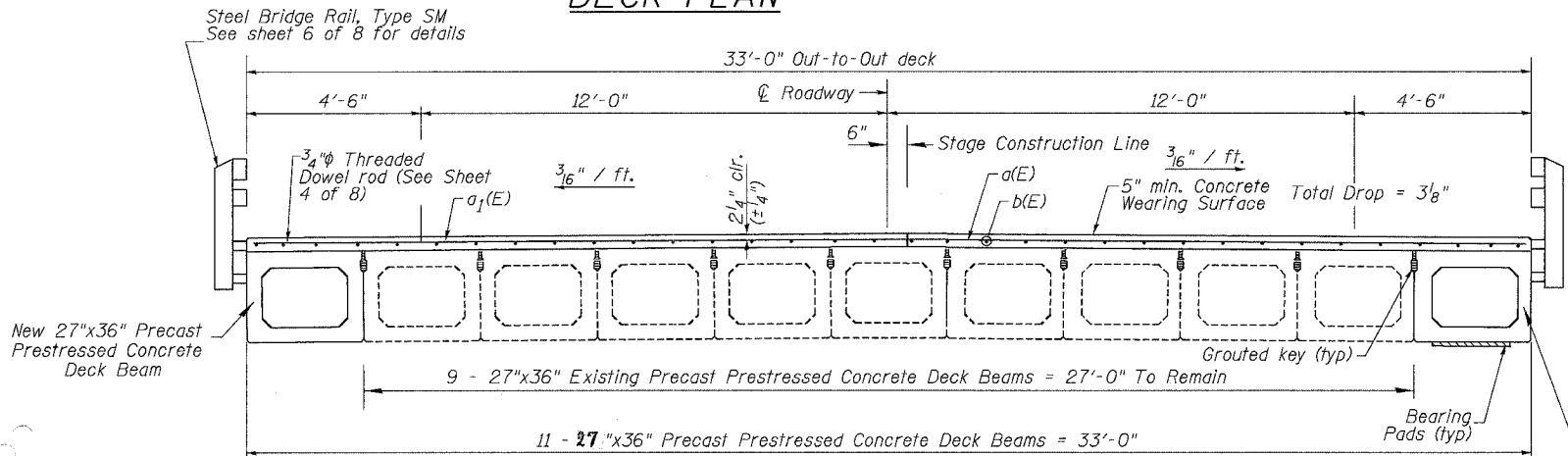
STATE OF ILLINOIS  
DEPARTMENT OF TRANSPORTATION

ROUTE NO.	SECTION	COUNTY	DATE	SHEET NO.	SHEET NO. 3
S. B. I.	*	Rock Island	29	12	8 SHEETS
F. A. I.					
FED. ROAD DIST. NO. 7	ILL. NO. 1	FED. AID PROJECT			

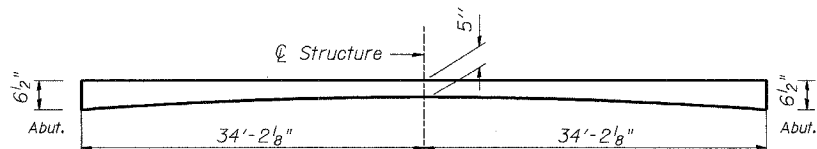
\* Section (19B-1)M Contract #64B06



DECK PLAN

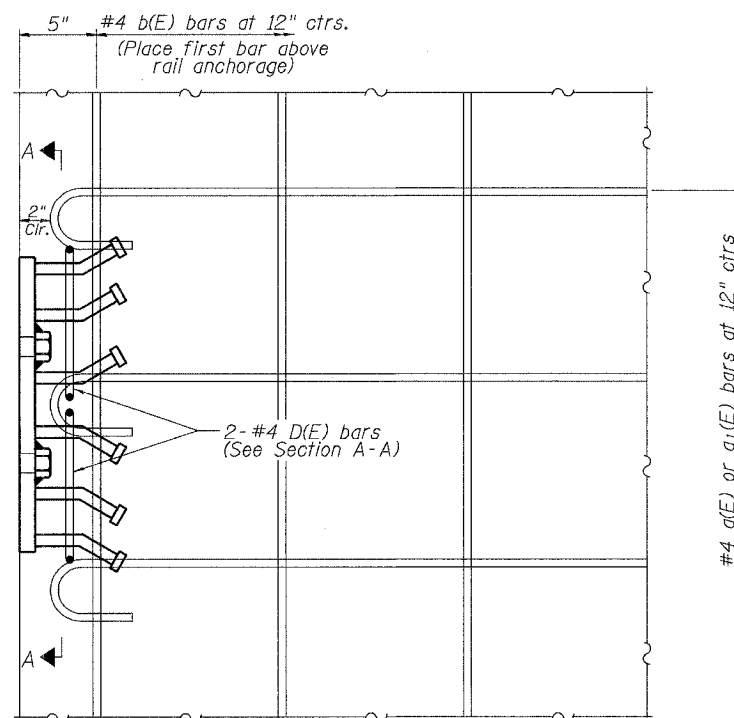


DECK CROSS SECTION  
(Looking North)



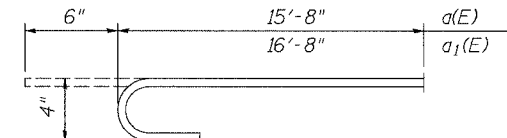
SECTION THRU WEARING SURFACE  
(Assumed Camber 1/2")

MIN. BAR LAP  
#4 Bar = 1'-8"



RAIL ANCHOR  
PLAN VIEW

The rail anchorage shall be cast with the beam and the wearing surface shall be cast in the field. Formwork necessary for the wearing surface may be secured utilizing the bottom rail anchorage inserts and/or additional inserts cast into beam. Drilling into the beam will not be permitted.



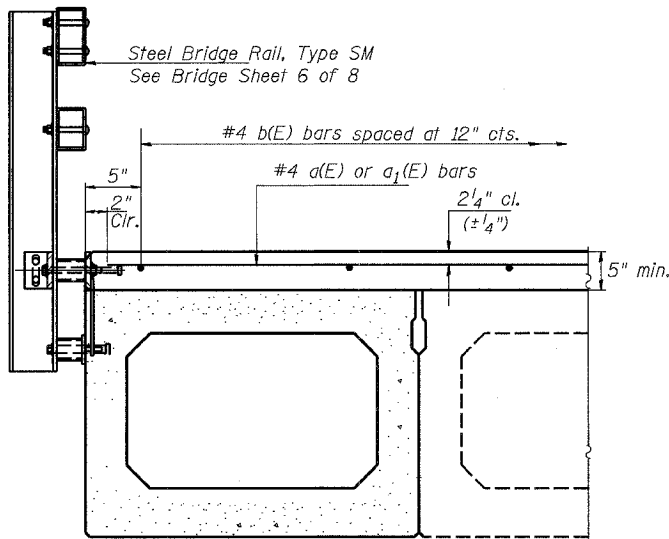
#4 a(E) & a<sub>1</sub>(E) BAR

BILL OF MATERIAL - SUPERSTRUCTURE

Bar	No.	Size	Length	Shape
a(E)	69	#4	16'-2"	⊏
a <sub>1</sub> (E)	69	#4	17'-4"	⊏
b(E)	66	#4	35'-6"	—
ITEM		UNIT	TOTAL	
Concrete Wearing Surface		Sq Yd	251	
Reinforcement Bars, Epoxy Coated		Pound	3110	

Reinforcement bars designated (E) shall be epoxy coated.

Bars indicated thus 33x2 - #4, etc. indicates 33 lines of bars with 2 lengths per line.



SECTION THRU DECK EDGE - MAIN SPAN

DECK PLAN  
F.A.S. 221 (IL RTE 94)  
OVER MILL CREEK  
SECTION (19B-1)M  
ROCK ISLAND COUNTY  
STR. NO. 081-0137

DESIGNED	SB
CHECKED	RB
DRAWN	DB, BS
CHECKED	SB