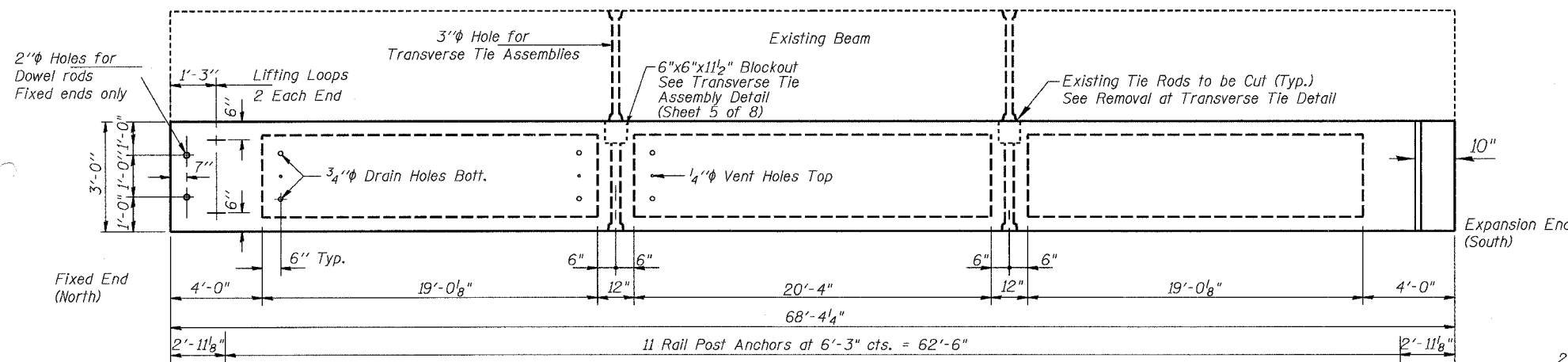


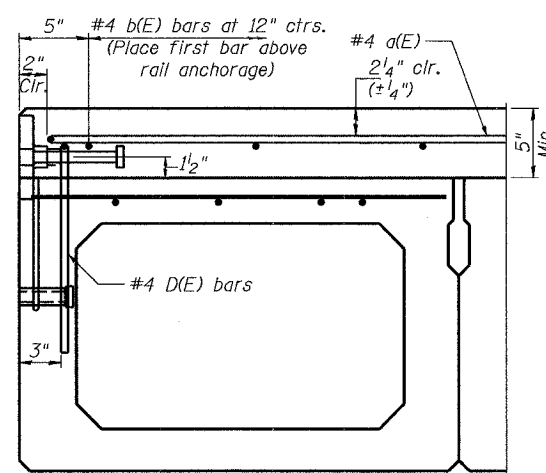
STATE OF ILLINOIS
DEPARTMENT OF TRANSPORTATION

ROUTE NO.	SECTION	COUNTY	SHEET	SHEET NO.
	*	Rock Island	29	13
FED. ROAD DIST. NO. 7	ILLINOIS	FED. AID PROJECT-		8 SHEETS

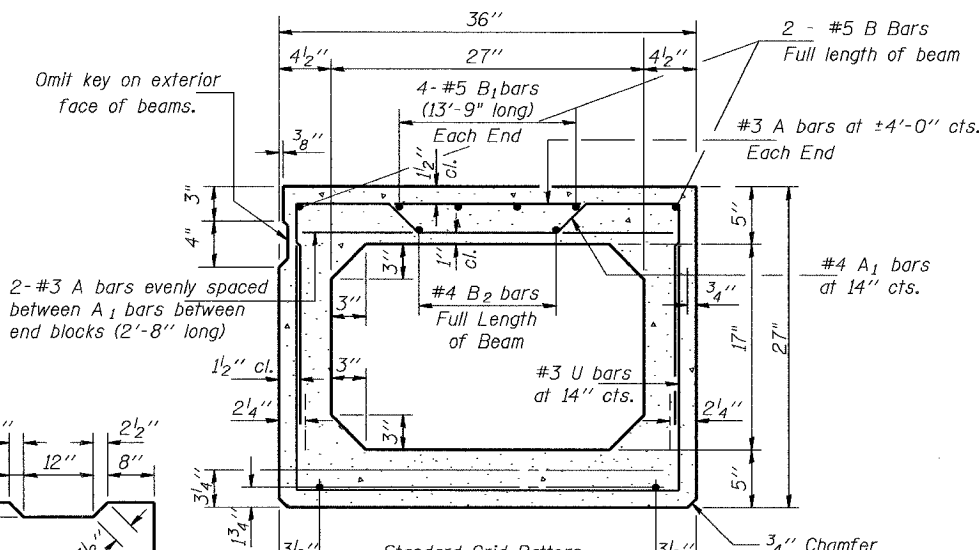
* Section (19BR-1)M Contract #64B06



PLAN

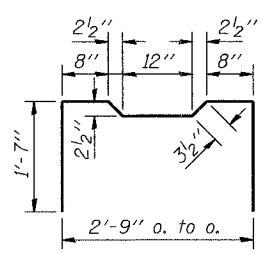


SECTION THRU EXTERIOR BEAMS

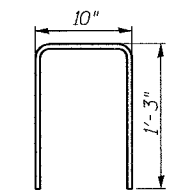


TYPICAL SECTION

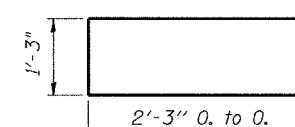
Note: Place strands symmetrically about center of beam.
17-1/2 #4 Strands Each Strand Stressed to 30,900 Lbs.
9-Strands 1 3/4" up, 4-Strands 3/4" up
2-Strands 7/2" up
2-Strands 10 1/2" up



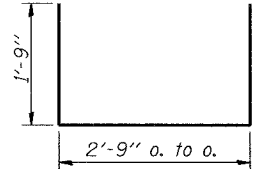
BAR A1



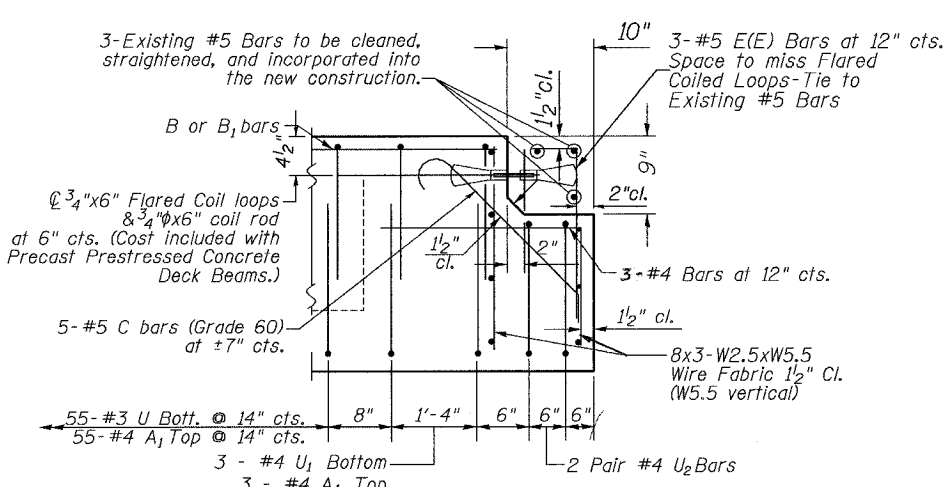
#4 D(E) BAR



BAR U2

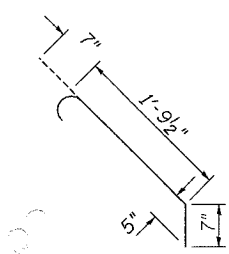


BARS U & U1

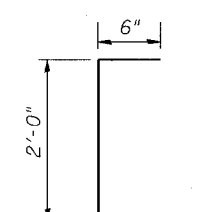


END OF BEAM (EXP. END)

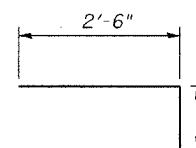
Dimensions are at rt. L's.



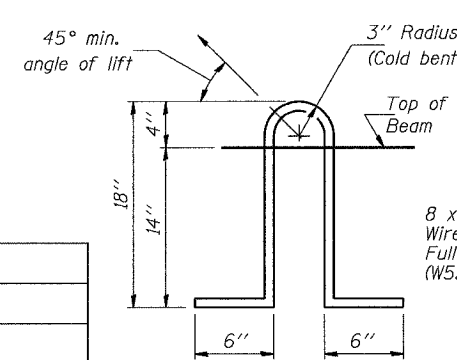
BAR C



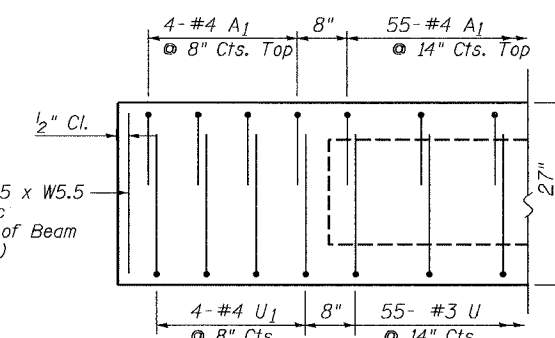
#5 E(E) BAR



#5 E1 BAR



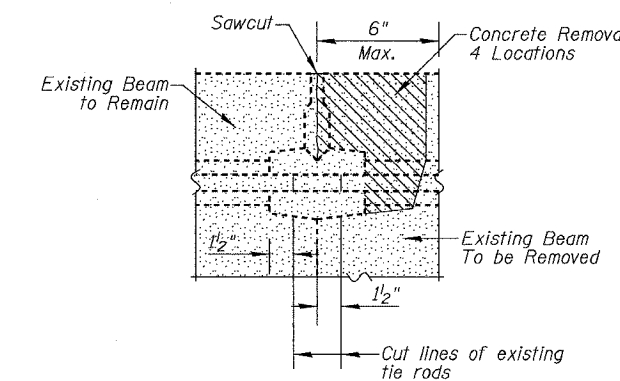
LIFTING LOOP DETAIL



FIXED END ELEVATION

NOTES

Prestressing steel shall be uncoated high strength, low relaxation 7-wire strand, Grade 270. The nominal diameter shall be 1/2" and the nominal cross-sectional area shall be 0.153 sq. in. Lifting loops shall be 3-1/2" Dia.-270 ksi strands, as shown. The 1" Dia. rods in the transverse tie assembly shall be tightened to a snug fit and the threads set. Pockets that receive transverse tie bar on outside shall be filled with grout after transverse tie assembly is in place. Non prestressing steel shall conform to AASHTO M-31 or M-322 Grade 60. The bearing seat surfaces shall be adjusted by shimming to assure firm and even bearing. Two 1/8" fabric adjusting shims of the dimensions shown on sheet 5 of 8 shall be provided for each bearing. Keyway surfaces shall be cleaned to remove form oil or other bond breaking material prior to shipment of the beams. Cleaning shall be done by sandblasting the keyway areas between top of the beam and the bottom edge of the key. Corrosion Inhibitor, as covered in the Special Provisions, shall be used in the concrete for precast prestressed concrete deck beams. Required Release Strength, f'ci, shall be 4000 p.s.i. The #4 D(E) & #5 E(E) bars shall be epoxy coated and the cost shall be considered included with Precast Prestressed Concrete Deck Beams. The cut strands at each beam end shall be given two coats of zinc dust spray or paint meeting the requirements of ASTM A 780. The zinc dust spray or paint shall be applied before corrosion appears and allowed to dry according to the manufacturer's specifications prior to another coat of zinc. A concrete sealer meeting the requirements of Section 587 of the Standard Specifications shall be applied to the exterior face and 9" in on the underside of the fascia beams. The sealer shall be applied after visible crack growth has subsided. This work shall be performed by the producer and included with the cost of the beam.



BEAM REMOVAL DETAIL AT TRANSVERSE TIES

SUPERSTRUCTURE
F.A.S. 221 (IL RTE 94)
OVER MILL CREEK
SECTION (19B-1)M
ROCK ISLAND COUNTY
STR. NO. 081-0137

DESIGNED	SB
CHECKED	RB
DRAWN	DB, BS
CHECKED	SB

PD-5-S 3-1-94