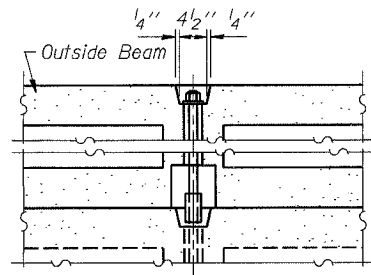


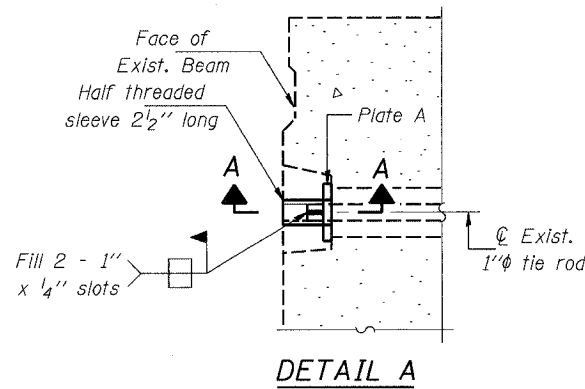
STATE OF ILLINOIS  
DEPARTMENT OF TRANSPORTATION

ROUTE NO.	SECTION	COUNTY	TOTAL SHEETS	SHEET NO.	SHEET NO. 5
S.B.L.	*	Rock Island	29	14	B SHEETS
FED. ROAD DIST. NO. 7	ILLINOIS	FED. AID PROJECT			

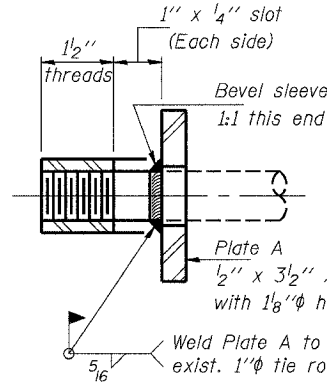
\* Section (19BR-1)M Contract #64B06



TYPICAL TRANSVERSE  
TIE ASSEMBLY



DETAIL A



SECTION A-A

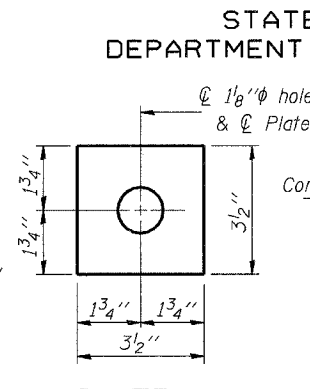
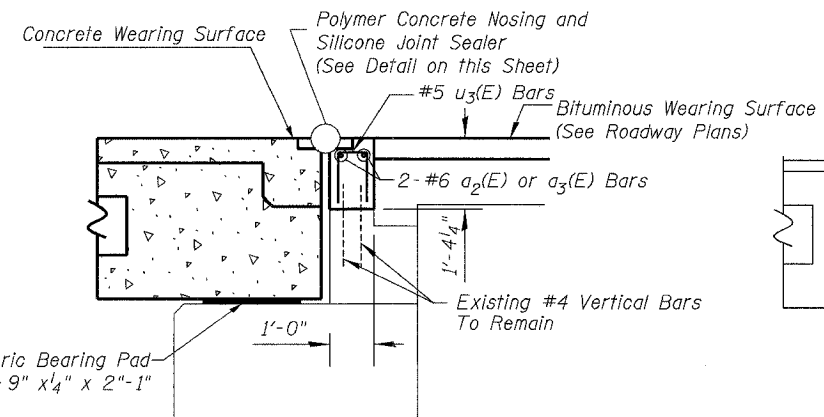
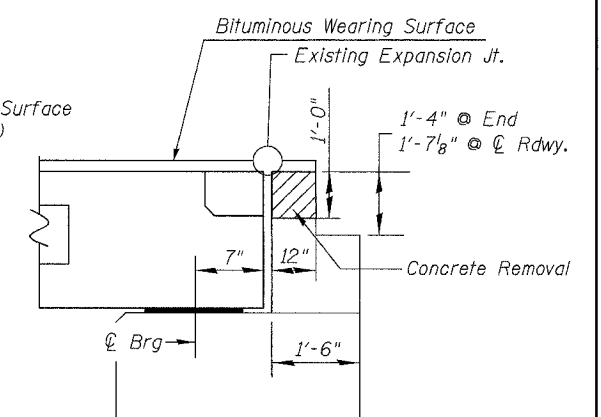


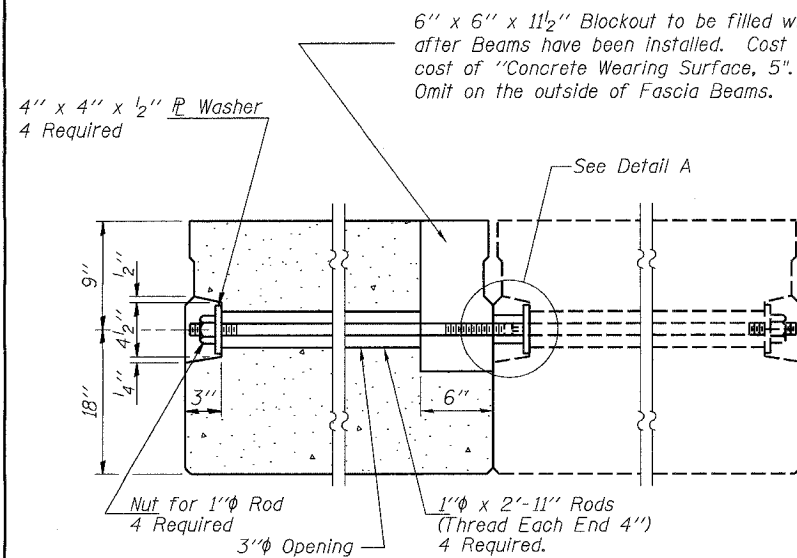
PLATE A



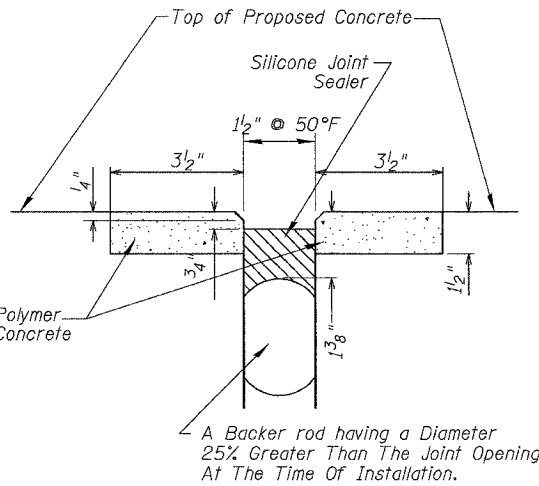
PROPOSED  
SECTION THRU SOUTH ABUTMENT



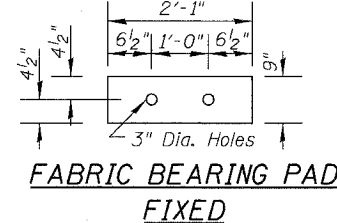
EXISTING  
SECTION THRU SOUTH ABUTMENT



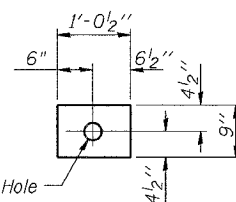
TYPICAL TRANSVERSE TIE ASSEMBLY



SILICONE JOINT SEALER DETAIL

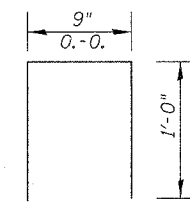


FABRIC BEARING PAD  
FIXED

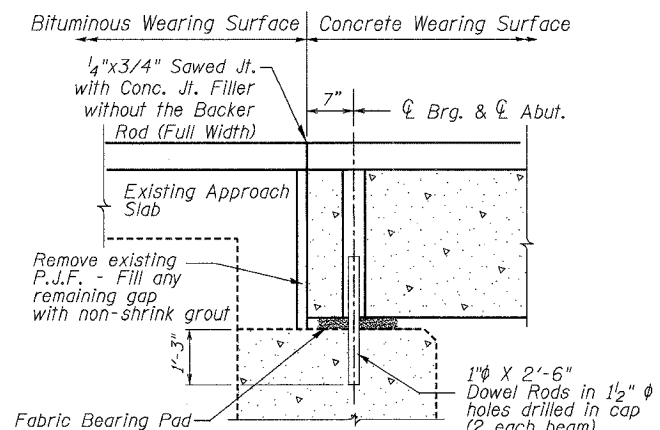


FIXED ADJUSTING SHIM

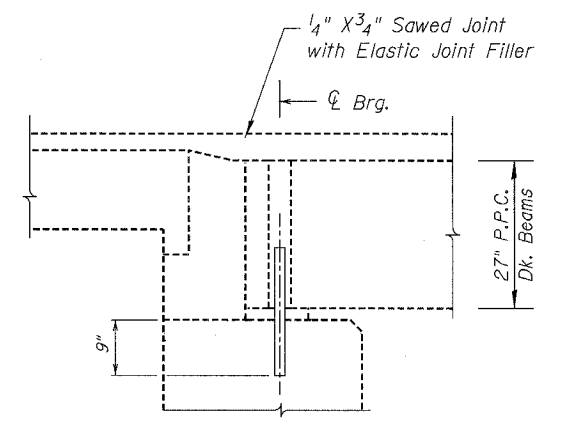
(Expansion adjusting shim similar, omit hole)



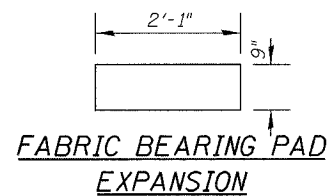
BAR u3(E)



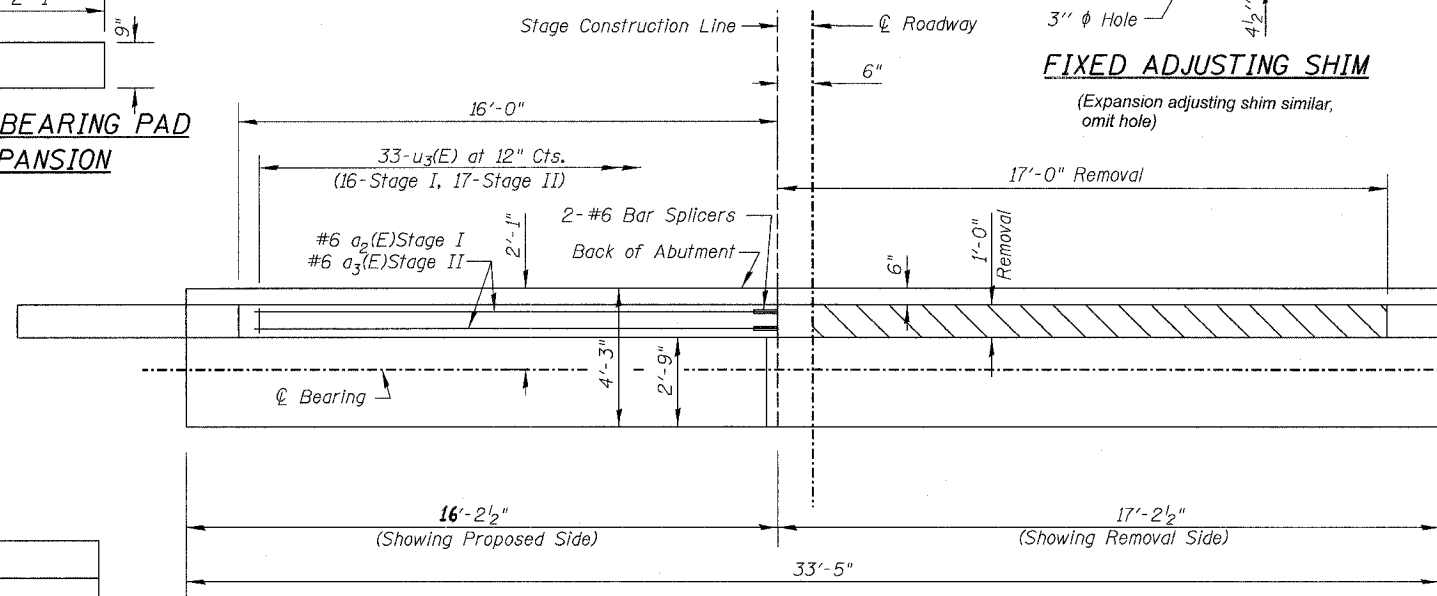
PROPOSED  
SECTION THRU NORTH ABUTMENT



EXISTING  
SECTION THRU NORTH ABUTMENT



FABRIC BEARING PAD  
EXPANSION

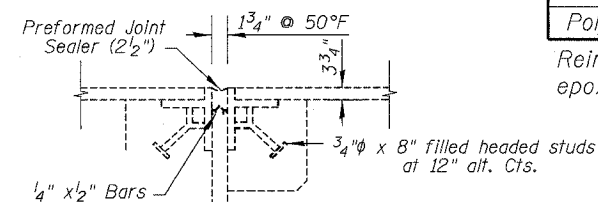


SOUTH ABUTMENT PLAN VIEW

BILL OF MATERIAL - JOINT REPLACEMENT

Bar	No.	Size	Length	Shape
a2(E)	2	#6	15'-9"	—
a3(E)	2	#6	16'-3"	—
u(E)	33	#5	2'-9"	□
ITEM		UNIT	TOTAL	
Reinforcement Bars, Epoxy Coated		Pound	190	
Concrete Structures		Cu Yd	1.7	
Concrete Removal		Cu Yd	1.3	
Silicone Joint Sealer, 1/2"		Foot	33	
Polymer Concrete		Cu Ft	2.4	

Reinforcement bars designated (E) shall be epoxy coated.



EXISTING  
SECTION THRU  
EXPANSION JT.

Note: Existing P.J.F. to be removed full width. Existing steel plates and square bars to be removed on the outside 3' of each side of the deck. Cost included with "Removal of Existing Precast Prestressed Deck Beams".

SUPERSTRUCTURE DETAILS  
F.A.S. 221 (IL RTE 94)  
OVER MILL CREEK  
SECTION (19B-1)M  
ROCK ISLAND COUNTY  
STR. NO. 081-0137

DESIGNED	SB
CHECKED	RB
DRAWN	DB, BS
CHECKED	SB