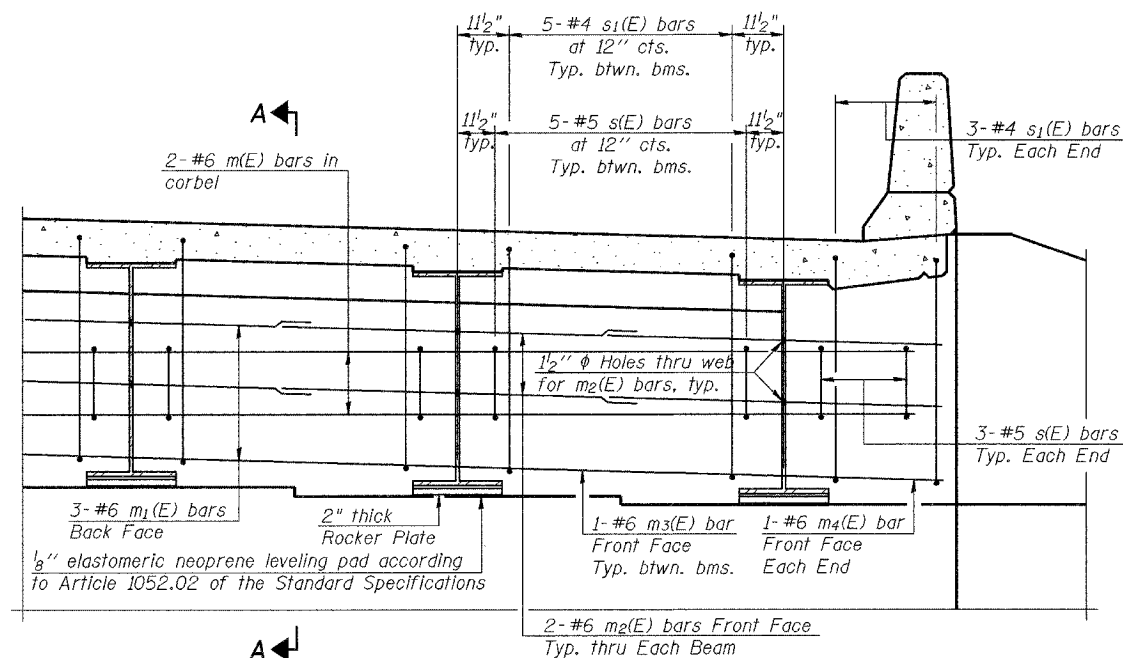


STATE OF ILLINOIS
DEPARTMENT OF TRANSPORTATION

ROUTE NO.	SECTION	COUNTY	SHEET	PROJECT	SHEET NO.
FAP 553	125 VBR-1F	DEKALB	15	8	13 SHEETS
FED. ROAD DIST. NO. 1		ILLINOIS	FED. AID PROJECT-		

Contract #64B90

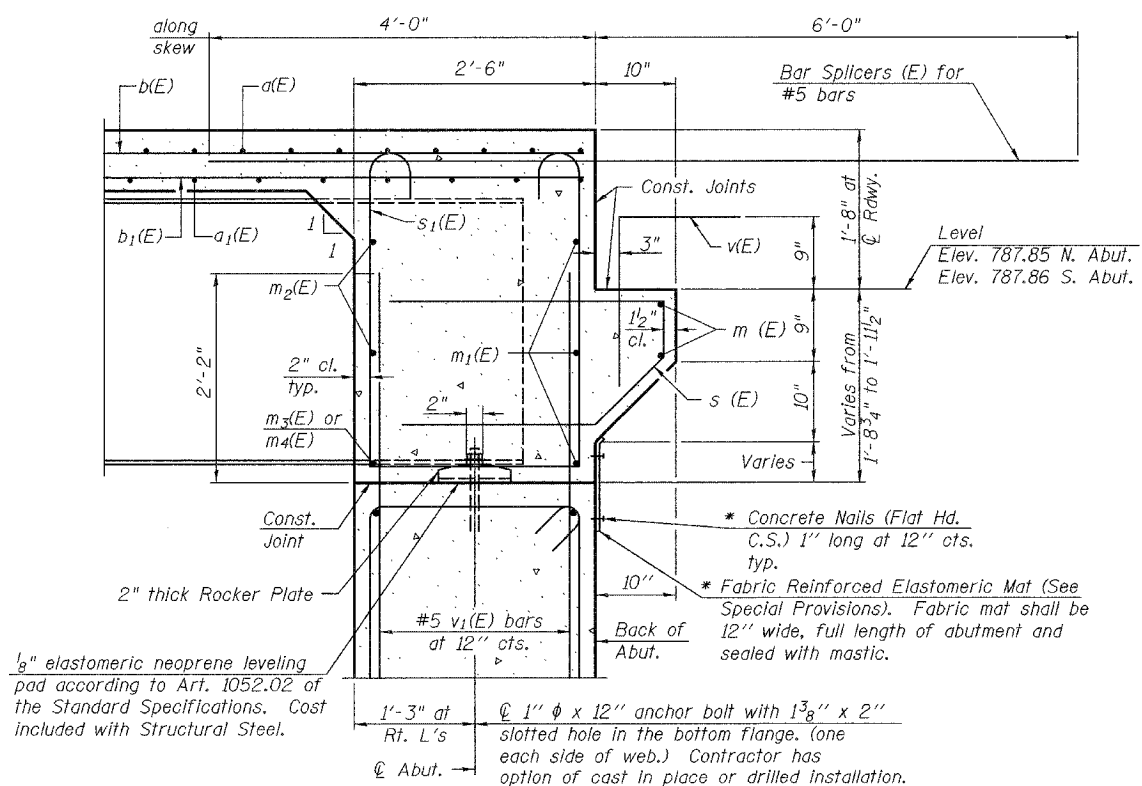


DIAPHRAGM ELEVATION AT ABUTMENT

Notes:
Reinforcement bars in diaphragm are billed with superstructure on sheet 5 of 13.
Concrete in diaphragm is included with Concrete Superstructure on sheet 5 of 13.
For details of bars s(E) & s1(E) see sheet 5 of 13.
The s(E) and s1(E) bars shall be placed parallel to the beams. Spacing for these bars shall be at right angles to the beams.
For anchor bolt details see sheet 13 of 13.

MIN. BAR LAP

#6 bar = 2'-9"



SECTION A-A

Dimensions at right angles to abutment, except as shown.
* Cost included with Concrete Superstructure.

FOR INFORMATION ONLY

SUPERSTRUCTURE DETAILS
IL RTE 72 OVER
IOWA CHICAGO & EASTERN RAILROAD
FAP ROUTE 553
SECTION 125VBR-1F
DEKALB COUNTY
STA. 144+14.40
SN 019-0047

DESIGNED	JKC
CHECKED	JDA
DRAWN	ARR
CHECKED	JKC

SI-DSI 10-22-04