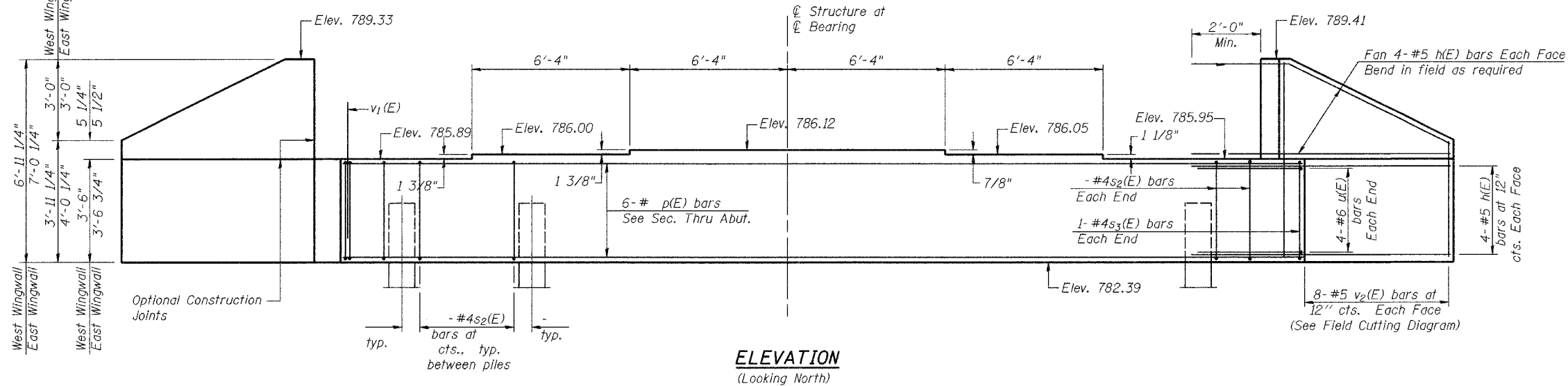


STATE OF ILLINOIS
DEPARTMENT OF TRANSPORTATION

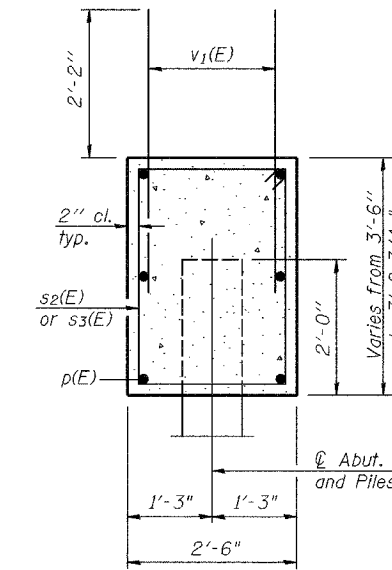
ROUTE NO.	SECTION	COUNTY	TOTAL SHEETS	SHEET NO.
FAP 553	125 VBR-1F	DEKALB	15	12
FED. ROAD DIST. NO. 7	ILLINOIS	FED. AID PROJECT-		

Contract #64B90

Notes: Pour steps monolithically with cap.
Reinforcement bars designated (E)
shall be epoxy coated.



ELEVATION
(Looking North)

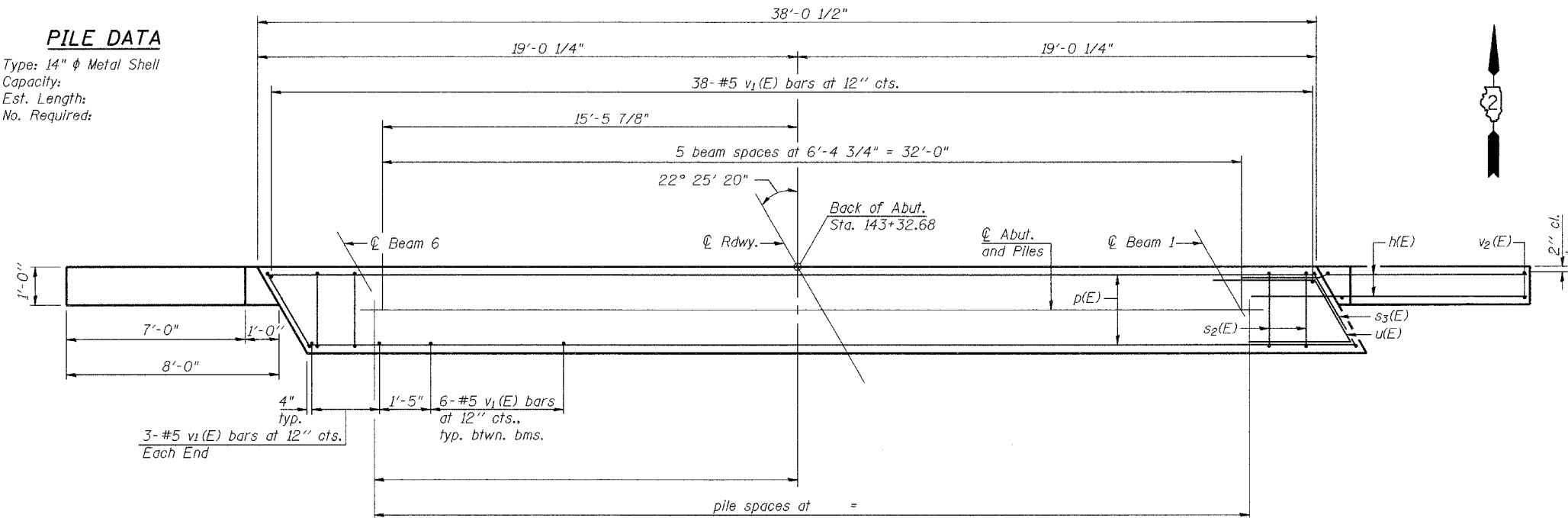


SEC. THRU ABUT.

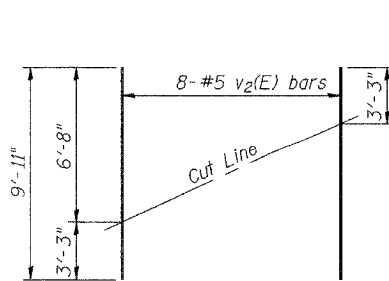
FOR INFORMATION ONLY

PILE DATA

Type: 14" ϕ Metal Shell
Capacity:
Est. Length:
No. Required:

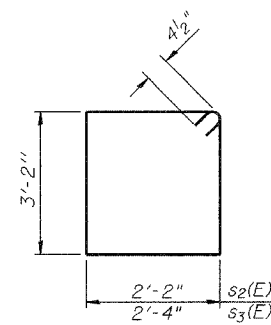


PLAN

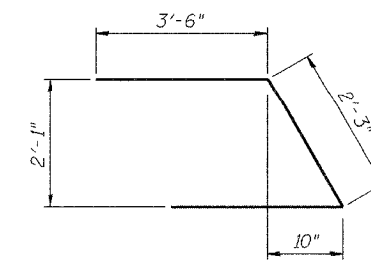


FIELD CUTTING DIAGRAM

Order $v_2(E)$ full length. Cut as shown and use remainder of bars in opposite face.



BARS $s_2(E)$ & $s_3(E)$



BAR $u(E)$

BILL OF MATERIAL

Bar	No.	Size	Length	Shape
$h(E)$	32	#5	9'-9"	—
$p(E)$	6	#7	37'-9"	—
$s_2(E)$		#4	11'-5"	□
$s_3(E)$	2	#4	11'-9"	□
$u(E)$	8	#6	9'-3"	△
$v_1(E)$	74	#5	4'-4"	—
$v_2(E)$	16	#5	9'-11"	—
Concrete Structures			Cu. Yd.	
Reinforcement Bars, Epoxy Coated			Pound	
Structure Excavation			Cu. Yd.	

DESIGNED	JDA
CHECKED	JKC
DRAWN	ARR
CHECKED	JKC

AI-L

10-22-04

**NORTH ABUTMENT
IL RTE 72 OVER
IOWA CHICAGO & EASTERN RAILROAD
FAP ROUTE 553
SECTION 125VBR-1F
DEKALB COUNTY
STA. 144+14.40
SN 019-0047**