

FAP RTE	SECTION	COUNTY	TOTAL SHEETS	SHEET NO.
681	116BR-1	FORD	37	1

P-93-048-04
D-93-044-05

INDEX OF SHEETS

SHEET NO.	DESCRIPTION
ROADWAY PLANS	
1.	COVER SHEET
2.	GENERAL NOTES AND STANDARDS
3.	SUMMARY OF QUANTITIES
4.	TYPICAL SECTIONS
5.	SCHEDULES OF QUANTITIES
6.-8.	FAP RTE 681 (IL 116) PLAN AND PROFILE
9.	TRAFFIC CONTROL AND PROTECTION FOR TEMPORARY DETOUR
10.	EROSION CONTROL AND DRAINAGE PLAN
11.	MISCELLANEOUS DETAILS
12.	GUARDRAIL DETAILS
STRUCTURE PLANS	
13.	GENERAL PLAN
14.	GENERAL DATA
15.	SUPERSTRUCTURE
16.-17.	SUPERSTRUCTURE DETAILS
18.	TYPE SM STEEL BRIDGE RAIL
19.	STRIP SEAL EXPANSION JOINT
20.	ANCHOR BOLT DETAILS
21.	WEST ABUTMENT
22.	EAST ABUTMENT
23.	ABUTMENT DETAILS
24.	PIER 1
25.	PIER 2
26.	PIER DETAILS
27.	BAR SPLICER ASSEMBLY DETAILS
EXISTING STRUCTURE PLANS	
28.-32.	EXISTING STRUCTURE PLANS
CROSS SECTIONS	
33.-37.	FAP RTE 681 (IL 116) CROSS SECTIONS

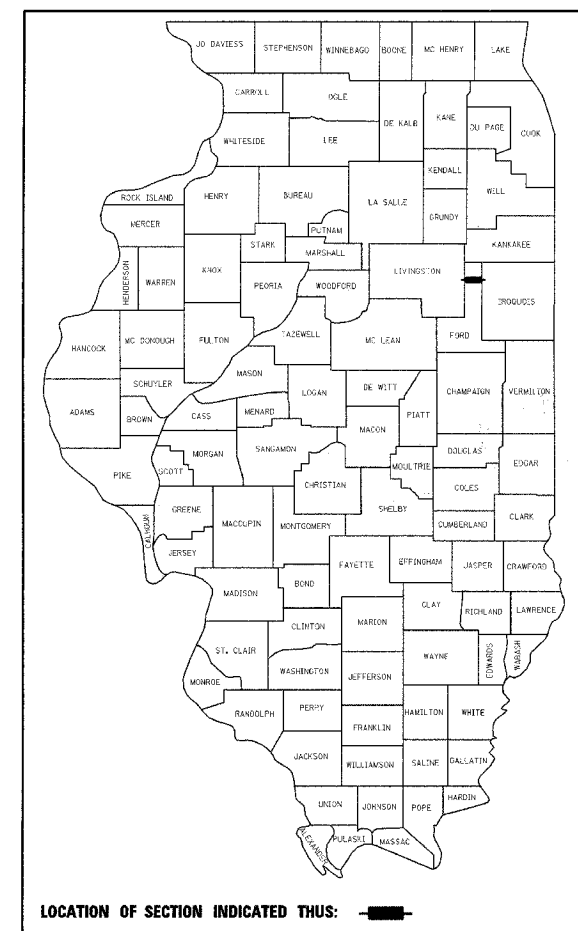
STATE OF ILLINOIS
DEPARTMENT OF TRANSPORTATION
DIVISION OF HIGHWAYS

**PROPOSED
HIGHWAY PLANS**

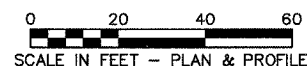
FAP ROUTE 681 (IL 116)
SECTION 116BR-1
PROJECT BHF-681(030)
FORD COUNTY

C - 93 - 067 - 05

ILLINOIS ROUTE 116 OVER KELLY CREEK
SUPERSTRUCTURE REPLACEMENT



FUNCTIONAL CLASSIFICATION: MINOR ARTERIAL (RURAL)
DESIGN SPEED: 55 mph
POSTED SPEED: 55 mph
ADT: 1200 (2006)
PV: 79.5%
SU: 9.1%
MU: 11.4%

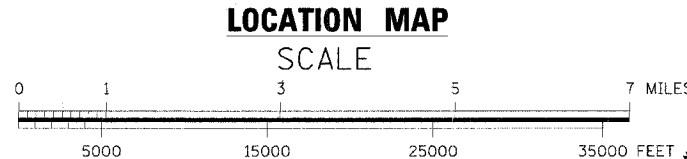
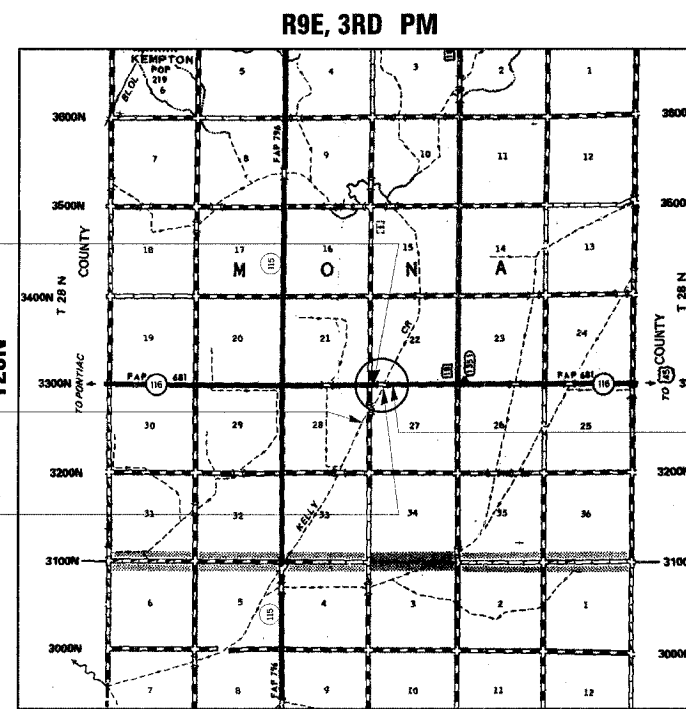
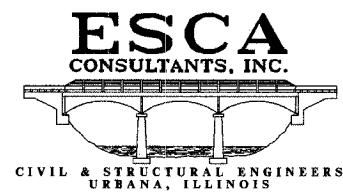


FULL SIZE PLANS HAVE BEEN PREPARED USING STANDARD ENGINEERING SCALES. REDUCED SIZED PLANS WILL NOT CONFORM TO STANDARD SCALES. IN MAKING MEASUREMENTS ON REDUCED PLANS, THE ABOVE SCALES MAY BE USED.

MICROFILMED _____
 REEL NUMBER _____
 AWARDED _____
 RESIDENT ENGINEER _____
 AS BUILT CHANGES WERE MADE ON THE FOLLOWING SHEETS _____

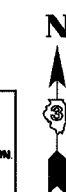
J.U.L.I.E.
 JOINT UTILITY LOCATION INFORMATION FOR EXCAVATION
 1-800-892-0123

DISTRICT 3 NO. (815) 434-6131
 PROJECT ENGINEER: RICK POWELL
 UNIT CHIEF: BRAD DUNCAN
 TOWNSHIP: MONA
 CONTRACT NO.: 66561



GROSS LENGTH = 228.5 FT. = 0.043 MI.
 NET LENGTH = 228.5 FT. = 0.043 MI.

**DESIGN DESIGNATION
N.A.**



STATE OF ILLINOIS
 DEPARTMENT OF TRANSPORTATION
 DIVISION OF HIGHWAYS

SUBMITTED _____ 20 _____

Gregory Monte DEPUTY DIRECTOR OF HIGHWAYS, REGION ENGINEER
 December 9, 20 05

Mike Shue ENGINEER OF DESIGN AND ENVIRONMENT
 December 9, 20 05

Eric Darnell DEPUTY DIRECTOR OF HIGHWAYS, CHIEF ENGINEER

**PRINTED BY THE AUTHORITY
OF THE STATE OF ILLINOIS**

Richard D. Payne DATE: 10/26/2005
 ILLINOIS PROFESSIONAL LICENSE NO. 37421
 (EXPIRATION DATE: 11-30-05)