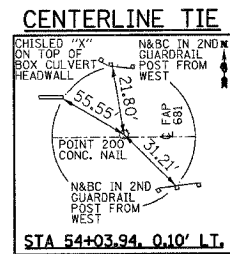
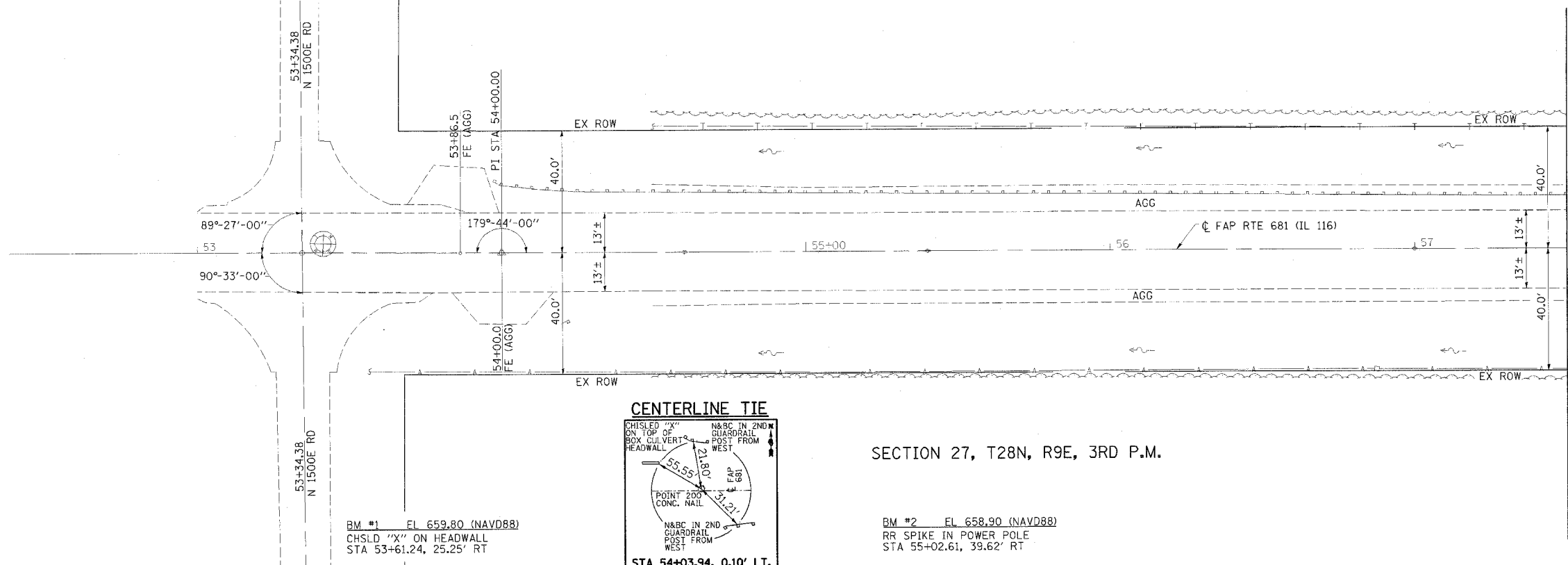
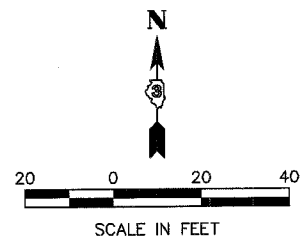


FAP RTE	SECTION	COUNTY	TOTAL SHEETS	SHEET NO.
681	1168R-1	FORD	37	6
STA. 53+00		TO STA. 57+50		
FED. ROAD DIST. NO.		ILLINOIS FED. AID PROJECT		

SECTION 22, T28N, R9E, 3RD P.M.



BM #1 EL 659.80 (NAVD88)
CHSLD "X" ON HEADWALL
STA 53+61.24, 25.25' RT

BM #2 EL 658.90 (NAVD88)
RR SPIKE IN POWER POLE
STA 55+02.61, 39.62' RT

MATCH LINE - STA 57+50

SECTION 27, T28N, R9E, 3RD P.M.

PLAN

DATE	
BY	
DESIGNED	
PLOTTED	
CHECKED	
IN CHARGE	
NOTE BOOK NO.	
DATE FILED	

PROFILE

DATE	
BY	
DESIGNED	
PLOTTED	
CHECKED	
IN CHARGE	
NOTE BOOK NO.	
DATE FILED	

