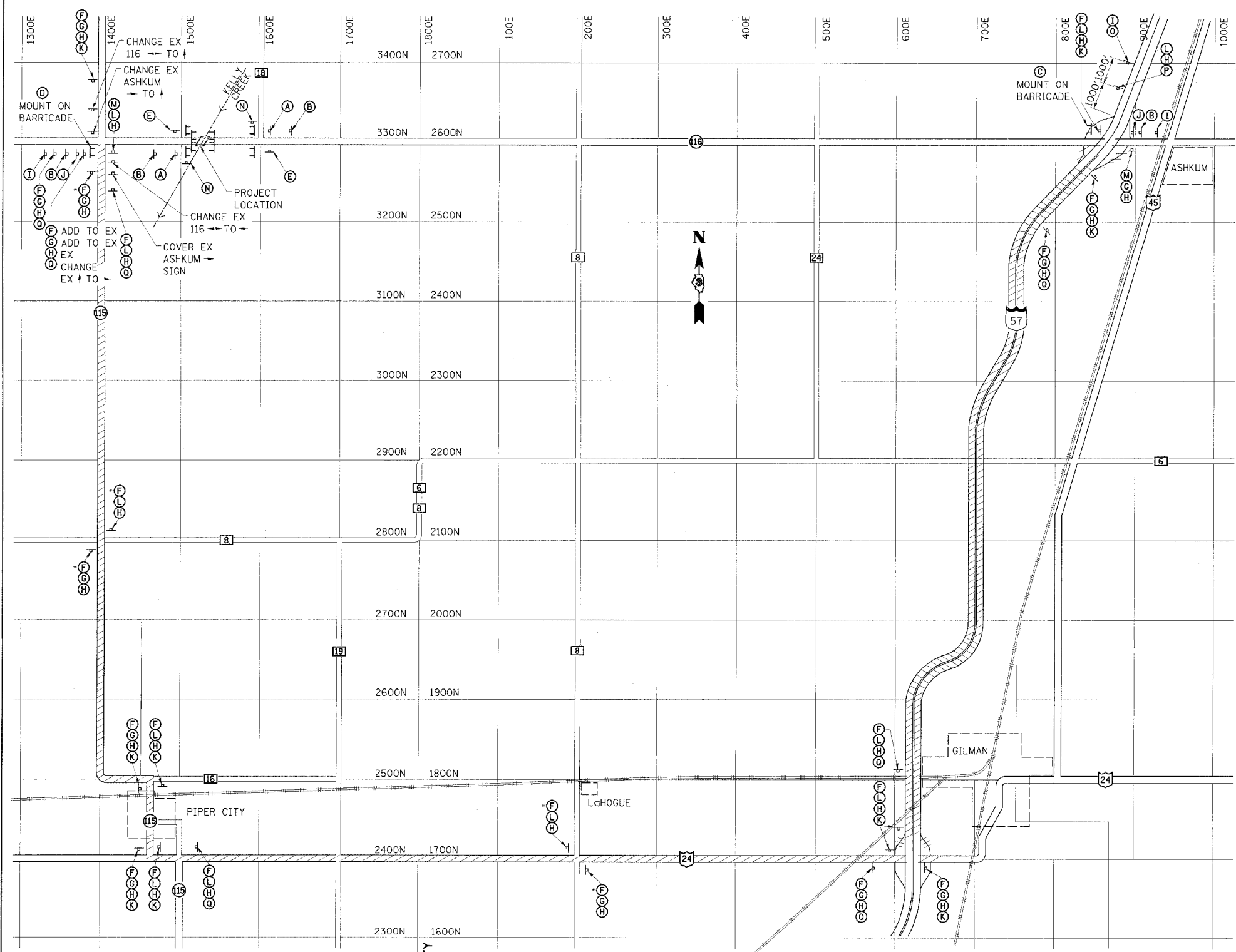


FAP RTE	SECTION	COUNTY	TOTAL SHEETS	SHEET NO.
681	116BR-1	FORD	37	9
STA. TO STA.				
FED. ROAD DIST. NO.		ILLINOIS FED. AID PROJECT		

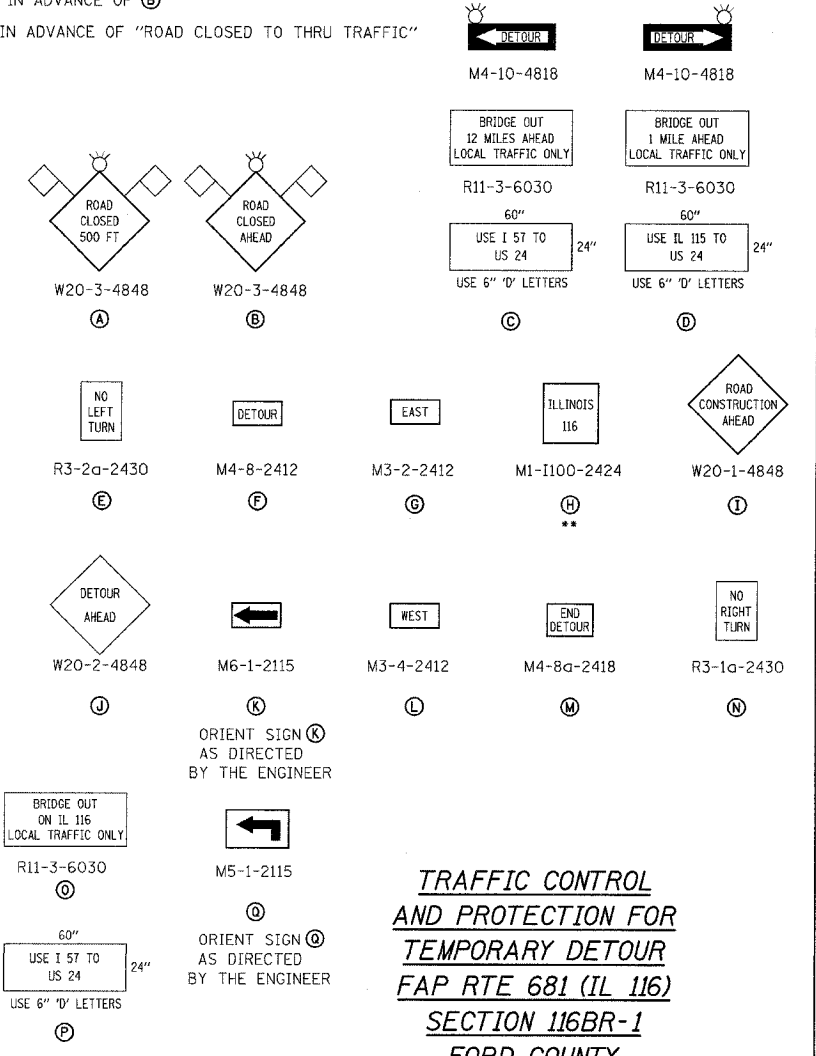


- LEGEND**
- TYPE III BARRICADE WITH 2 FLASHING LIGHTS PER BARRICADE
 - SIGNS ON PERMANENT SUPPORTS
 - FLASHING LIGHT ABOVE SIGN
 - 18"X18" ORANGE FLAG
 - STANDARD 702001 "ROAD CLOSED TO ALL TRAFFIC" APPLICATION
 - STANDARD 702001 "ROAD CLOSED TO THRU TRAFFIC" APPLICATION

- GENERAL NOTES**
1. ALL TRAFFIC CONTROL DEVICES SHALL BE FURNISHED, ERECTED AND MAINTAINED BY THE CONTRACTOR, UNLESS NOTED OTHERWISE.
 2. ALL SIGNS NOT ATTACHED TO BARRICADES SHALL BE POST MOUNTED.
 3. LOCATIONS OF TRAFFIC CONTROL DEVICES MAY BE ADJUSTED BY THE ENGINEER.
 4. ALL TRAFFIC CONTROL SHOWN ON THIS SHEET SHALL BE PAID FOR PER LUMP SUM FOR TRAFFIC CONTROL AND PROTECTION FOR TEMPORARY DETOUR. OTHER ITEMS REQUIRED BY THE ENGINEER AND NOT SHOWN ON THIS DRAWING SHALL BE INCLUDED IN THE PAY ITEM AND NO ADDITIONAL COMPENSATION WILL BE ALLOWED.
 5. THE ILLINOIS DEPARTMENT OF TRANSPORTATION WILL FURNISH ALL IL 116 ROUTE SIGNS FOR THIS DETOUR. THE CONTRACTOR SHALL NOTIFY DISTRICT 3 BUREAU OF OPERATIONS 14 CALENDAR DAYS PRIOR TO PLACING THE DETOUR.

SIGN MOUNTING LOCATIONS

- ① 500' IN ADVANCE OF ② OR ③
- ② 500' IN ADVANCE OF ④ AND 1000' IN ADVANCE OF ⑤
- ③ 1000' IN ADVANCE OF ⑥
- ④ 500' IN ADVANCE OF "ROAD CLOSED TO THRU TRAFFIC"



TRAFFIC CONTROL AND PROTECTION FOR TEMPORARY DETOUR
FAP RTE 681 (IL 116)
SECTION 116BR-1
FORD COUNTY

ESCA
CONSULTANTS, INC.

DESIGNED BY:	MTD	7/05
DRAWN BY:	DWH	7/05
CHECKED BY:	MTD	7/05
APPROVED BY:	RDP	8/05

TEMPORARY DETOUR PLAN
 NO SCALE

- TO BE LOCATED AS DIRECTED BY THE ENGINEER
- FURNISHED BY IDOT