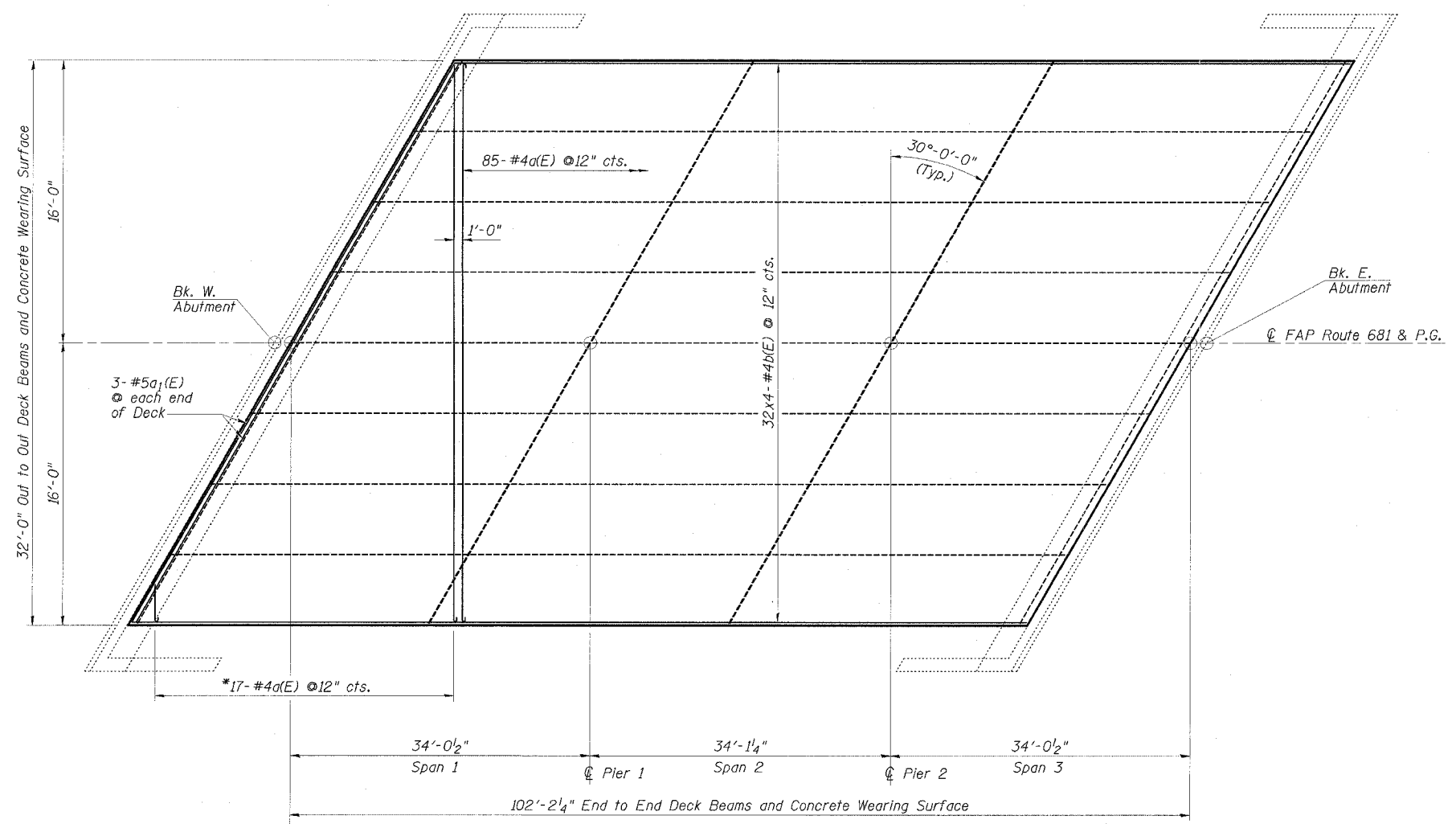


STATE OF ILLINOIS  
DEPARTMENT OF TRANSPORTATION

ROUTE NO.	SECTION	COUNTY	TOTAL SHEETS	SHEET NO.
FAP 681	116BR-1	FORD	37	15
STA.	TO STA.			
FED. ROAD DIST. NO.	ILLINOIS	FED. AID PROJECT		
DWG. NO. 3 OF 15				

CONTRACT NO. 66561



\*Order a(E) bars full length. Cut to fit skew and use remainder of bars in opposite end.

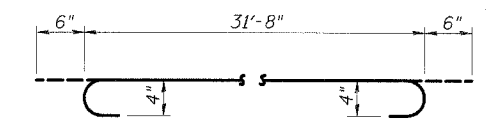
**MIN. BAR LAP**  
#4 bar = 1'-8"

Note:  
Reinforcement bars designated (E) shall be epoxy coated. Bars indicated thus 32x4-#4 etc. indicates 32 lines of bars with 4 lengths per line. For remainder of superstructure details, see drawings 4 and 5 of 15.

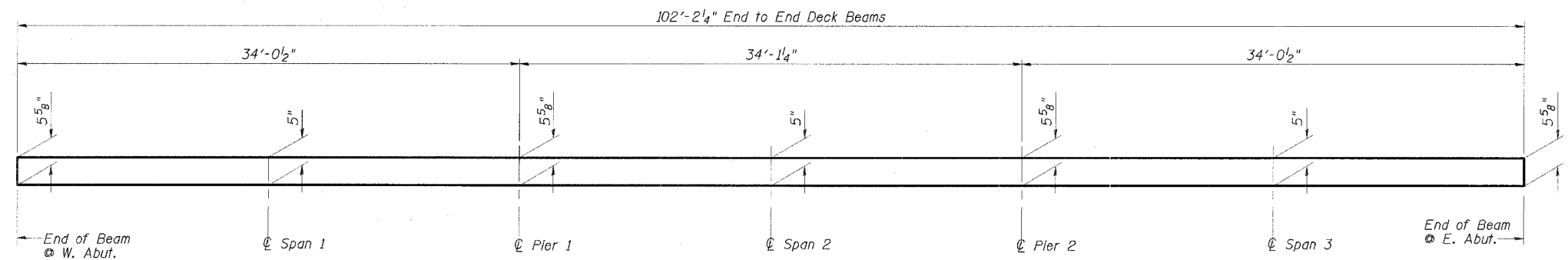
**PLAN**

**CONCRETE WEARING SURFACE  
BILL OF MATERIAL**

Bar	No.	Size	Length	Shape
a(E)	102	#4	32'-8"	
a1(E)	6	#5	36'-6"	
b(E)	128	#4	26'-9"	
Reinforcement Bars, Epoxy Coated			Pound	4750
Concrete Wearing Surface, 5"			Sq. Yd.	364
Bridge Deck Grooving			Sq. Yd.	341
Protective Coat			Sq. Yd.	364



**BAR a(E)**



**REINFORCED CONCRETE WEARING SURFACE PROFILE**  
(At centerline of roadway)

Note:  
Greater thickness is required at edges of superstructure to conform to cross section slopes shown on Dwg. 4 of 15.

**ESCA**  
CONSULTANTS, INC.

DESIGNED BY:	ELH	6/05
DRAWN BY:	CJG	6/05
CHECKED BY:	ELH	10/05
APPROVED BY:	RDP	10/05

**SUPERSTRUCTURE**  
IL 116 OVER KELLY CREEK  
FAP ROUTE 681 - SECTION 116BR-1  
FORD COUNTY  
STATION 60+53.00  
STRUCTURE NO. 027-0044