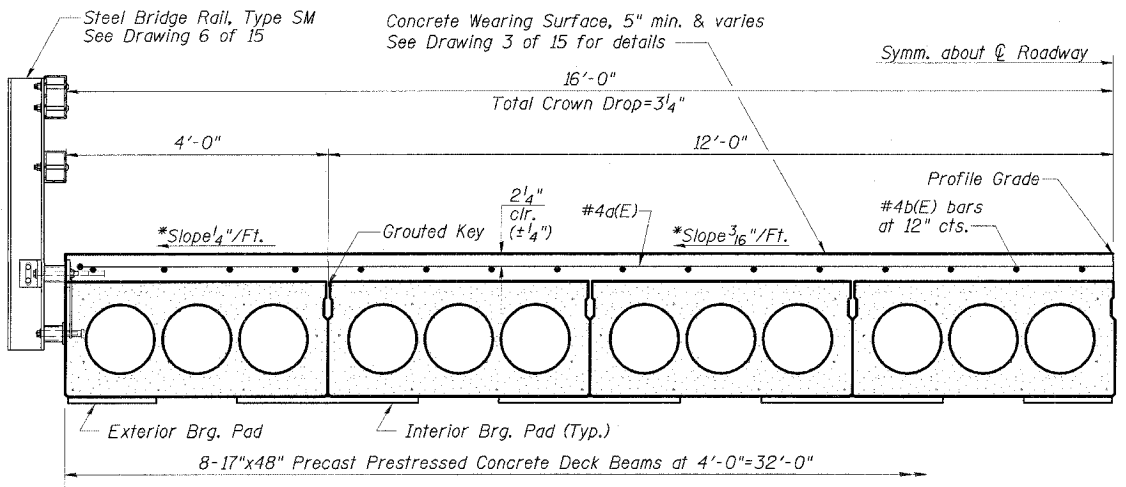
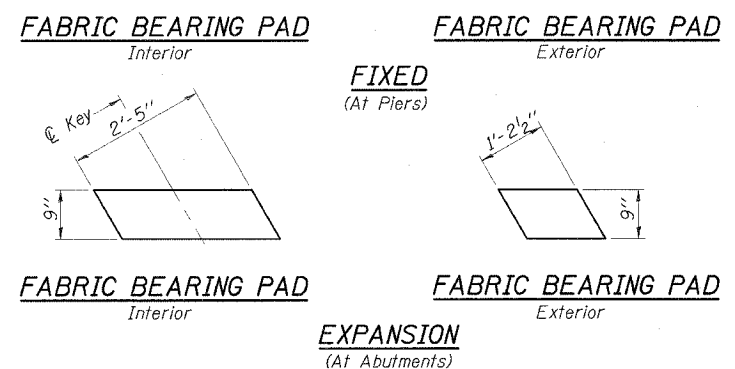
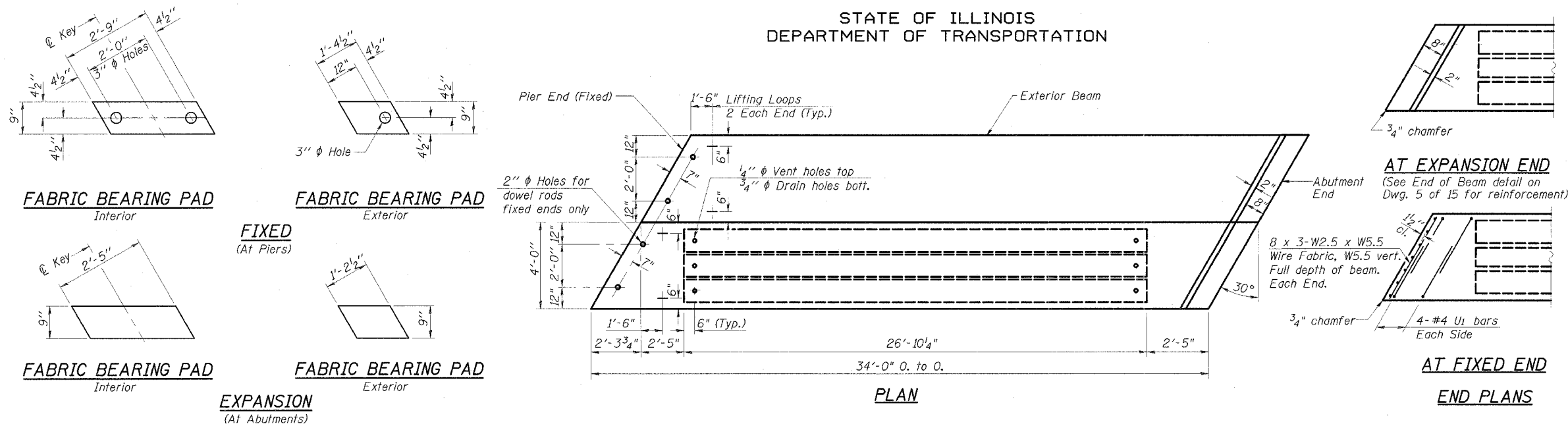


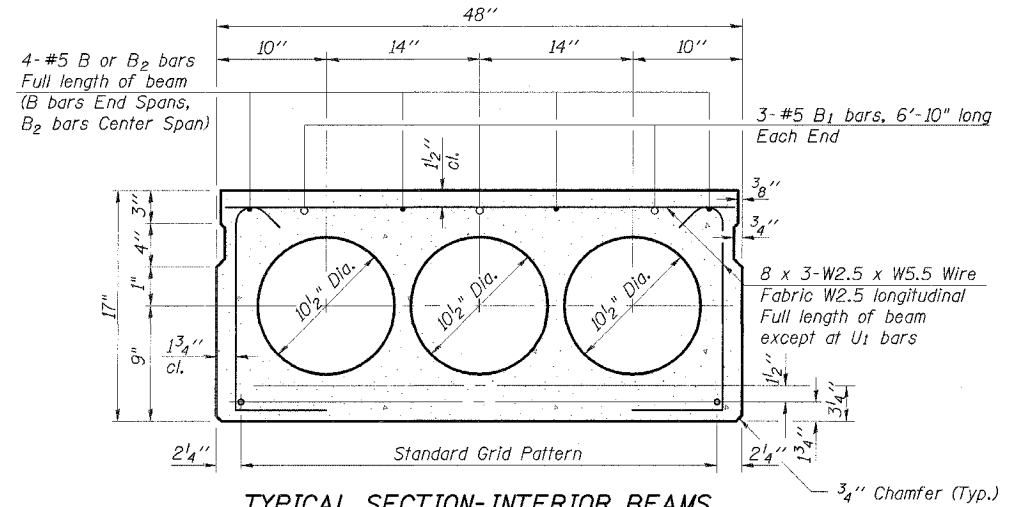
STATE OF ILLINOIS  
DEPARTMENT OF TRANSPORTATION

ROUTE NO.	SECTION	COUNTY	TOTAL SHEETS	SHEET NO.
FAP 681	116BR-1	FORD	37	16
STA.	TO STA.			
FED. ROAD DIST. NO.		ILLINOIS	FED. AID PROJECT-	
DWG. NO. 4 OF 15				

CONTRACT NO. 66561



HALF CROSS SECTION

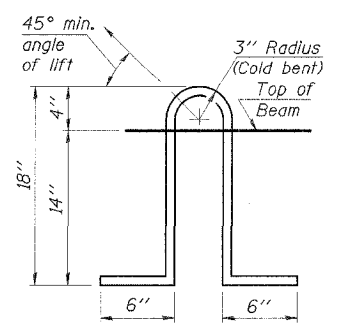


TYPICAL SECTION-INTERIOR BEAMS  
 11-1/2" φ Strands, Each Strand Stressed to 30,900 Lbs.  
 9-Strands 1 3/4" up, 2-Strands 3/4" up

- Notes:  
 1. Place strands symmetrically about C of beam.  
 2. See Dwg. 5 of 15 for fascia beam details.

NOTES

Prestressing steel shall be uncoated high strength, low relaxation 7-wire strand, Grade 270. The nominal diameter shall be 1/2" and the nominal cross-sectional area shall be 0.153 sq. in. Lifting loops shall be 2-1/2" φ-270 ksi strands, as shown.  
 Non prestressing steel shall conform to AASHTO M-31 or M322 Grade 60.  
 The bearing seat surfaces shall be adjusted by shimming to assure firm and even bearing. Two 1/8" fabric adjusting shims of the dimensions of the Exterior Bearing Pad shall be provided for each bearing.  
 Keyway surfaces shall be cleaned to remove form oil or other bond breaking material prior to shipment of the beams. Cleaning shall be done by sandblasting the keyway areas between top of the beam and the bottom edge of the key.  
 Corrosion Inhibitor, as covered in the Special Provisions, shall be used in the concrete for precast prestressed concrete deck beams.  
 Required Release Strength, f'ci, shall be 4,000 p.s.i.  
 See Drawing 2 of 15 for location of rail anchors and additional notes.  
 Bridge rail inserts shall be cast in precast beams, and the cast shall be included with Precast Prestressed Concrete Deck Beams.



LIFTING LOOP DETAIL

**ESCA**  
CONSULTANTS, INC.  
 DESIGNED BY: ELH 6/05  
 DRAWN BY: CJG 6/05  
 CHECKED BY: ELH 10/05  
 APPROVED BY: RDP 10/05

**SUPERSTRUCTURE DETAILS**  
**IL 116 OVER KELLY CREEK**  
**FAP ROUTE 681 - SECTION 116BR-1**  
**FORD COUNTY**  
**STATION 60+53.00**  
**STRUCTURE NO. 027-0044**