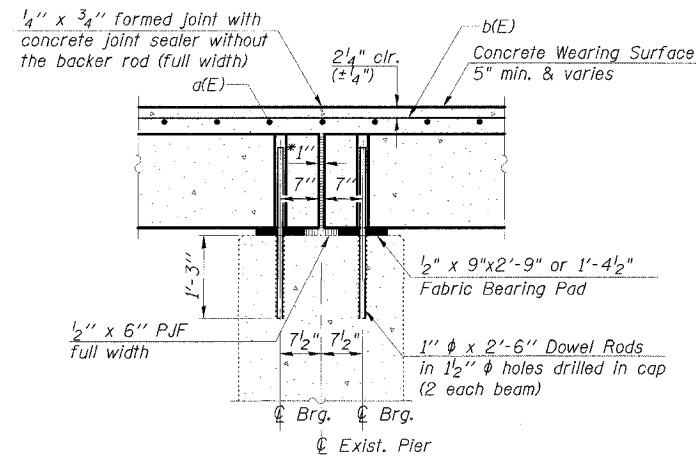


STATE OF ILLINOIS
DEPARTMENT OF TRANSPORTATION

ROUTE NO.	SECTION	COUNTY	TOTAL SHEETS	SHEET NO.
FAP 681	116BR-1	FORD	37	17
STA.	TO STA.			
FED. ROAD DIST. NO.	ILLINOIS	FED. AID PROJECT-		
DWG. NO. 5 OF 15				

CONTRACT NO. 66561

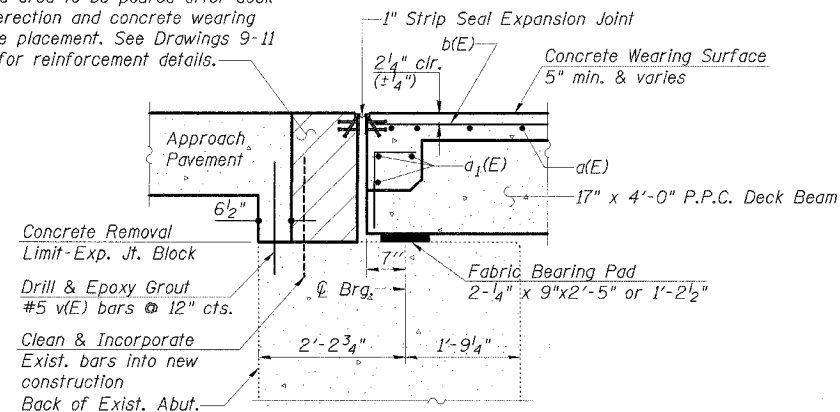


SECTION THRU PIER

(Horizontal dimensions are at right angles to beam ends)

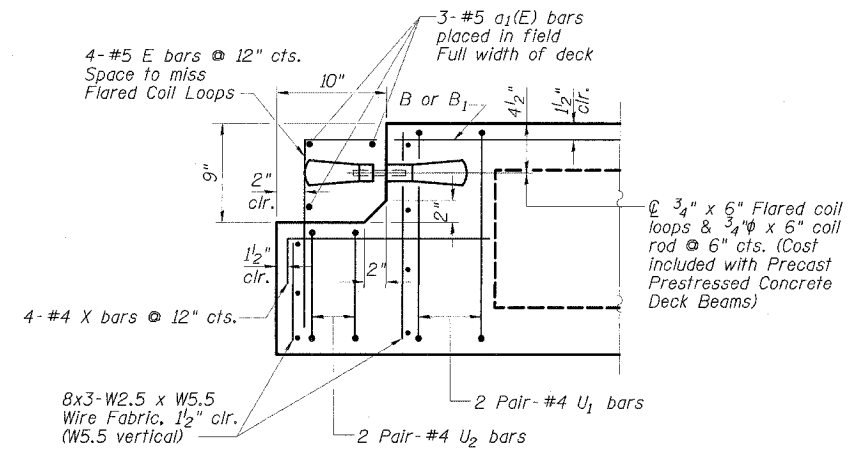
*1" jt. shall be filled with non-shrink grout. 1" dimension may vary to accommodate tolerance in beam lengths.

Hatched area to be poured after deck beam erection and concrete wearing surface placement. See Drawings 9-11 of 15 for reinforcement details.



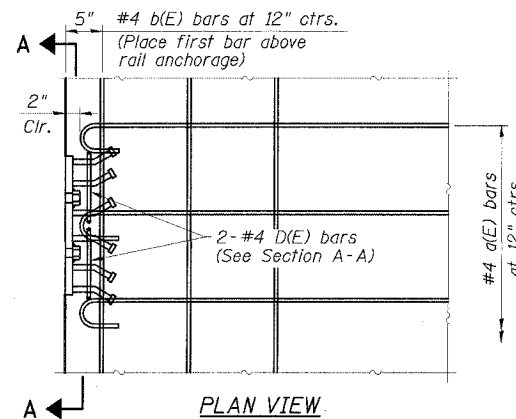
SECTION THRU ABUTMENT

(Dimensions at right angles)



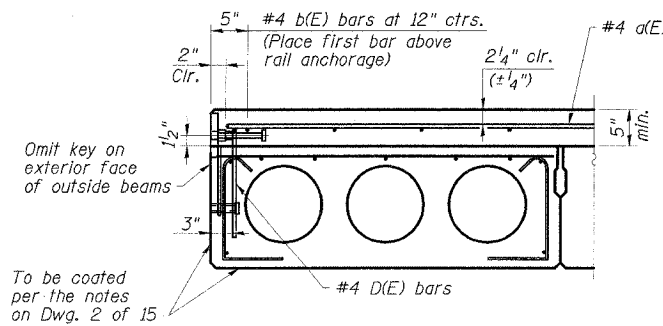
END OF BEAM (EXPANSION END)

(Dimensions at right angles)



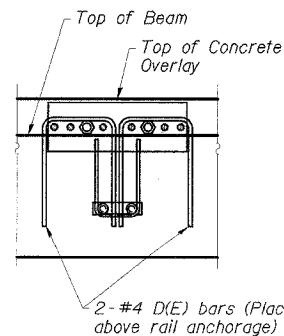
PLAN VIEW

The rail anchorage shall be cast with the beam and the wearing surface shall be cast in the field. Formwork necessary for the wearing surface may be secured utilizing the bottom rail anchorage inserts and/or additional inserts cast into beam. Drilling into the beam will not be permitted.

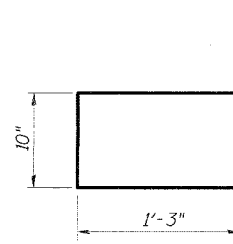


FASCIA BEAM CROSS SECTION

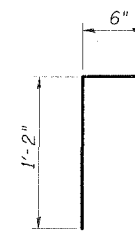
See Section Thru Interior Beams on Dwg. 4 of 15 for strand pattern, dimensions and bar call outs.



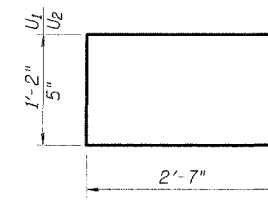
SECTION A-A



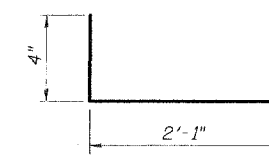
BAR D(E)



BAR E



BARS U₁ & U₂



BAR X

NOTES

After beams have been erected, holes shall be drilled into substructure and dowels rods placed. Dowel holes shall be filled with non-shrink grout to top of beam and allowed to cure min. 24 hrs. prior to grouting the shear keys.

Concrete wearing surface to be poured after grouting the shear keys.

Dowel rods drilled in cap are included in the cost of Precast Prestressed Concrete Deck Beams (17" depth).

ESCA
CONSULTANTS, INC.

DESIGNED BY:	ELH	6/05
DRAWN BY:	CJG	6/05
CHECKED BY:	ELH	10/05
APPROVED BY:	RDP	10/05

SUPERSTRUCTURE DETAILS
IL 116 OVER KELLY CREEK
FAP ROUTE 681 - SECTION 116BR-1
FORD COUNTY
STATION 60+53.00
STRUCTURE NO. 027-0044