

STATE OF ILLINOIS
DEPARTMENT OF TRANSPORTATION

ROUTE NO.	SECTION	COUNTY	TOTAL SHEETS	SHEET NO.
FAP 681	116BR-1	FORD	37	19
STA.	TO STA.			
FED. ROAD DIST. NO.	ILLINOIS	FED. AID PROJECT-		
DWG. NO. 7 OF 15				

CONTRACT NO. 66561

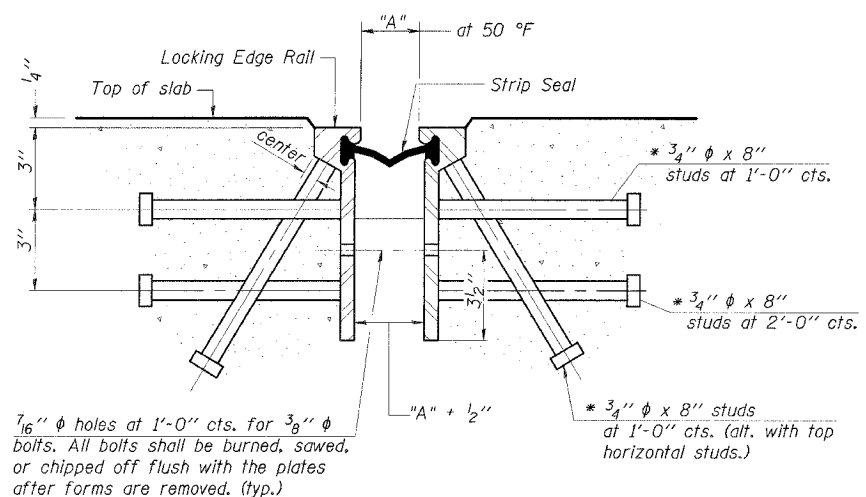
GENERAL NOTES

The strip seal shall be made continuous and shall have a minimum thickness of $\frac{1}{4}$ ". The configuration of the strip seal shall match the configuration of the Locking Edge Rails.

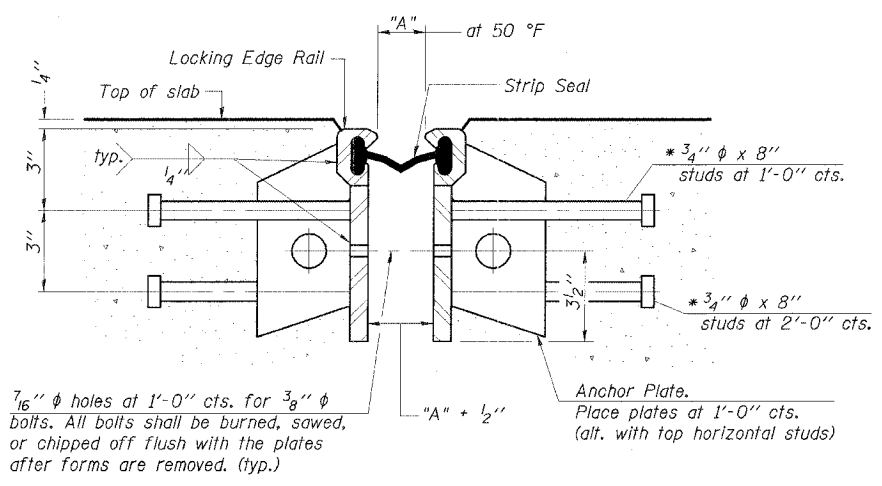
The height and thickness of the Locking Edge Rails shown are minimum dimensions. The actual configuration of the Locking Edge Rails and matching strip seal may vary from manufacturer to manufacturer. Flanged edge rails will not be allowed.

Locking Edge Rails may be spliced at slope discontinuities and stage construction joints.

The manufacturer's recommended installation methods shall be followed.



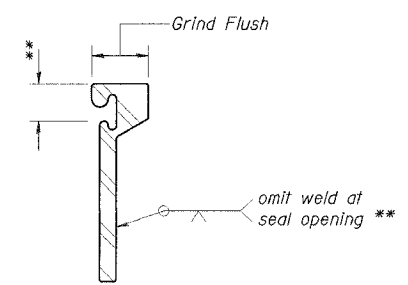
Required Strip Seal rated movement	"A"
1"	1 $\frac{1}{8}$ "
2"	1 $\frac{3}{4}$ "



SECTION THRU ROLLED RAIL EXP. JOINT
(178 Studs Required at Each Joint)

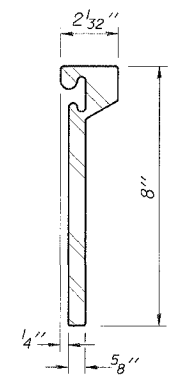
SECTION THRU WELDED RAIL AT EACH EXPANSION JOINT
(108 Studs Required at Each Joint)
(70 Anchor Plates Required at Each Joint)

* Granular or solid flux filled headed studs conforming to Article 1006.32 of the Std. Specs., automatically end welded.

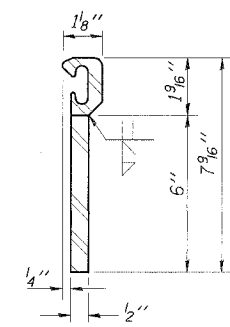


LOCKING EDGE RAIL SPLICE

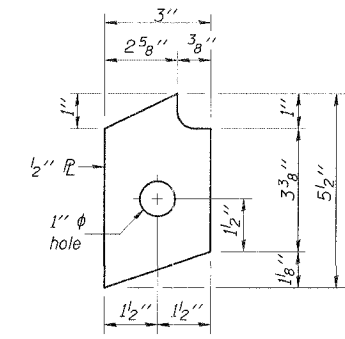
The inside of the locking edge rail groove shall be free of weld residue.



ROLLED (EXTRUDED) RAIL



WELDED RAIL



ANCHOR PL
(for welded rail)

LOCKING EDGE RAILS

ESCA
CONSULTANTS, INC.

DESIGNED BY:	ELH	6/05
DRAWN BY:	CJG	6/05
CHECKED BY:	ELH	9/05
APPROVED BY:	RDP	9/05

STRIP SEAL EXPANSION JOINT
IL 116 OVER KELLY CREEK
FAP ROUTE 681 - SECTION 116BR-1
FORD COUNTY
STATION 60+53.00
STRUCTURE NO. 027-0044