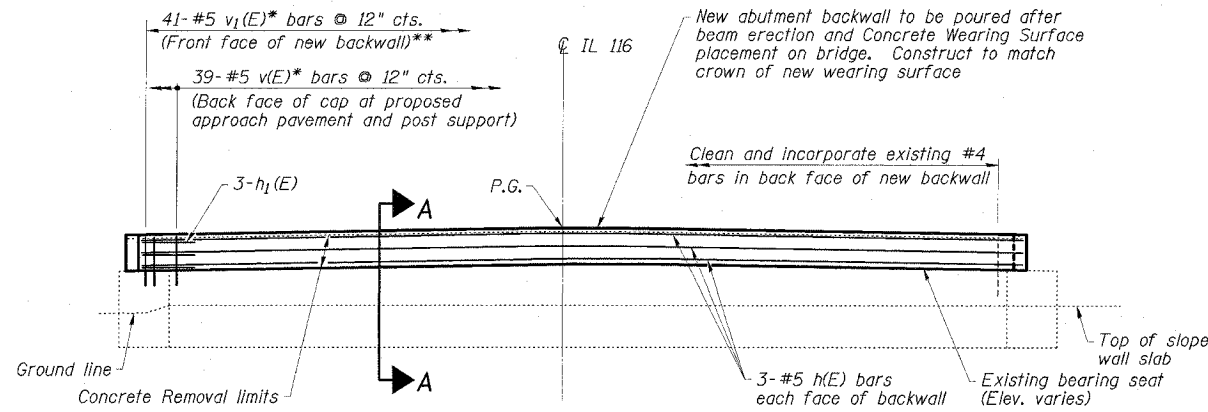


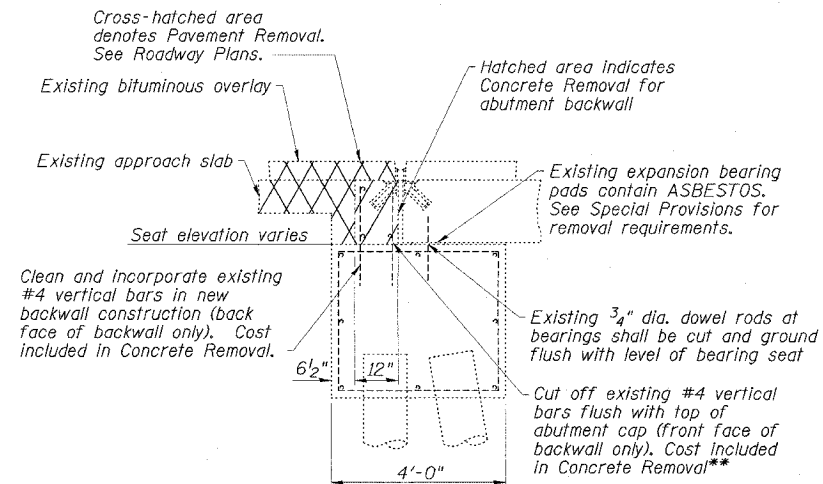
STATE OF ILLINOIS  
DEPARTMENT OF TRANSPORTATION

ROUTE NO.	SECTION	COUNTY	TOTAL SHEETS	SHEET NO.
FAP 681	116BR-1	FORD	37	22
STA.	TO STA.			
FED. ROAD DIST. NO.	ILLINOIS	FED. AID PROJECT-		
DWG. NO. 10 OF 15				

CONTRACT NO. 66561



**ELEVATION**  
Backwall Repairs

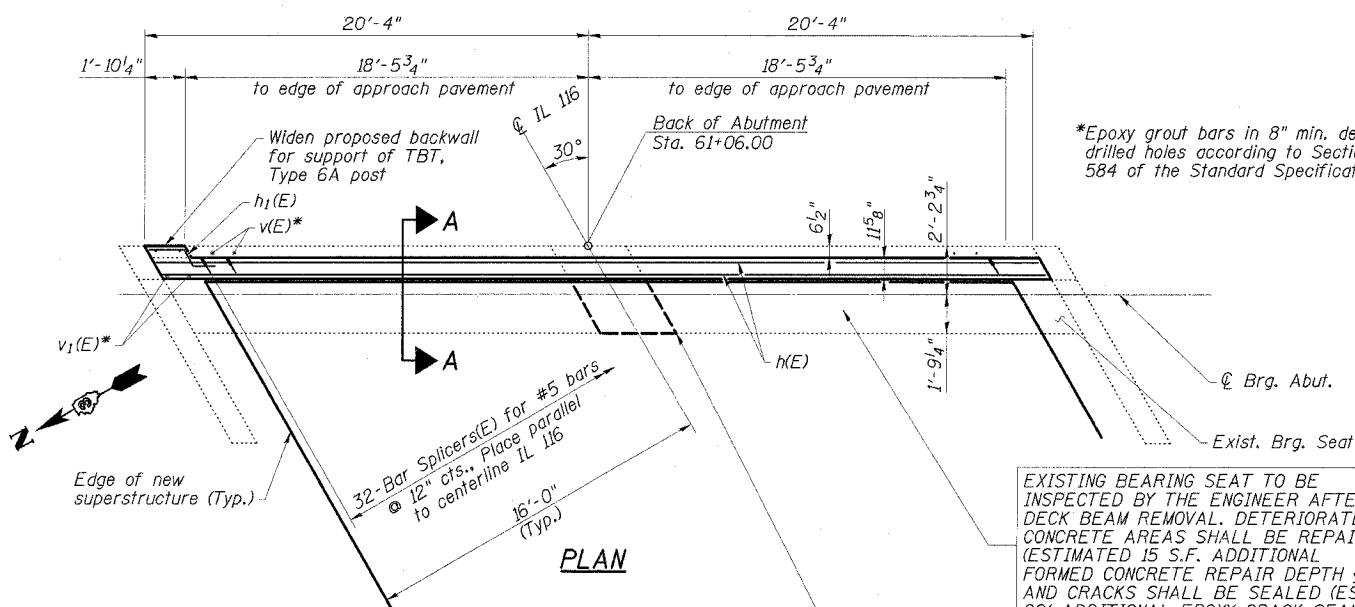


**SECTION B-B**  
EXISTING

\*\*As directed by the Engineer, the existing #4 vertical bars in the front face of backwall may be cleaned and incorporated into new backwall construction and the #5 v<sub>1</sub>(E) bars eliminated from the contract if 1/2" minimum clearance can be maintained from the face of the new backwall

**EAST ABUTMENT**  
BILL OF MATERIAL

Bar	No.	Size	Length	Shape
h (E)	6	#5	40'-3"	—
h <sub>1</sub> (E)	3	#5	3'-6"	—
v (E)	39	#5	2'-0"	—
v <sub>1</sub> (E)	41	#5	2'-3"	—
Concrete Removal			Cu. Yd.	2.2
Concrete Structures			Cu. Yd.	3.0
Reinforcement Bars, Epoxy Coated			Pound	445
Structure Excavation			Cu. Yd.	36
Asbestos Bearing Pad Removal			Each	22
Bridge Seat Sealer			Sq. Ft.	24
Epoxy Crack Sealing			Foot	33
Formed Concrete Repair (Depth Equal to or Less Than 5")			Sq. Ft.	25.2
Bar Splicers			Each	32

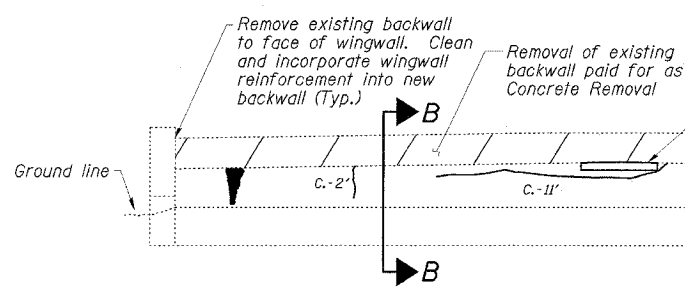


**PLAN**

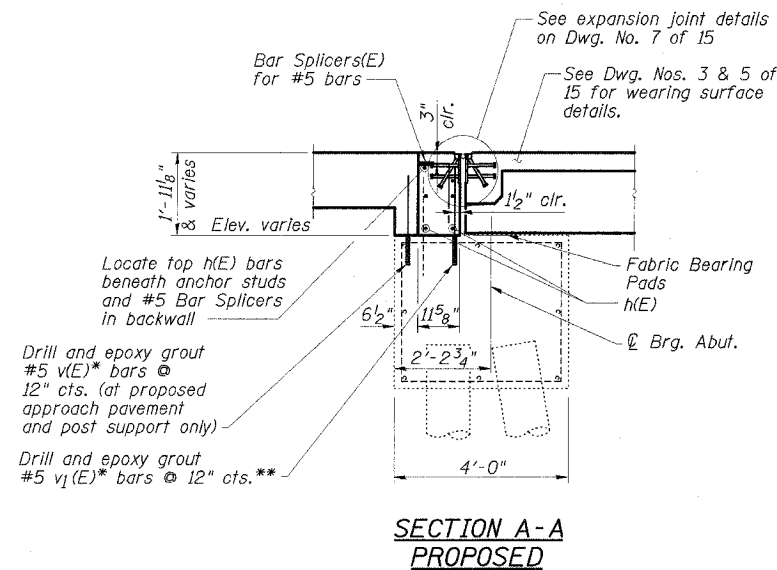
\*Epoxy grout bars in 8" min. depth drilled holes according to Section 584 of the Standard Specifications.

EXISTING BEARING SEAT TO BE INSPECTED BY THE ENGINEER AFTER DECK BEAM REMOVAL. DETERIORATED CONCRETE AREAS SHALL BE REPAIRED (ESTIMATED 15 S.F. ADDITIONAL FORMED CONCRETE REPAIR DEPTH < 5") AND CRACKS SHALL BE SEALED (ESTIMATED 20' ADDITIONAL EPOXY CRACK SEALING) IF FOUND. BRIDGE SEAT SEALER SHALL BE APPLIED TO FORMED CONCRETE REPAIR AREAS.

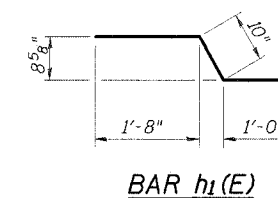
8.7 S.F. Formed Concrete Repair to be used to slope existing level portion of abutment seat to provide uniform bearing area for proposed beams



**ELEVATION**  
Cap and Wingwall Repairs



**SECTION A-A**  
PROPOSED



**REPAIR LEGEND**  
Inspection Date: 4-14-05

- † Rust Stained Area
- (W/L) Moisture Stained or Leached Area
- HL Hairline Crack - Not to be Sealed
- c.-6' Crack (> 1/16" Width) EPOXY CRACK SEALING
- L.C.-6' Leached Crack (> 1/16" Width) EPOXY CRACK SEALING
- S.F. Delaminated Area FORMED CONC. REPAIR
- S.F. Spalled Area (Depth < 5") FORMED CONC. REPAIR

**EAST ABUTMENT**  
IL 116 OVER KELLY CREEK  
FAP ROUTE 681 - SECTION 116BR-1  
FORD COUNTY  
STATION 60+53.00  
STRUCTURE NO. 027-0044

**ESCA**  
CONSULTANTS, INC.

DESIGNED BY:	ELH	6/05
DRAWN BY:	DWH	6/05
CHECKED BY:	ELH	9/05
APPROVED BY:	RDP	9/05

NOTE: ABUTMENT CRACK REPAIR LENGTHS AND FORMED CONCRETE REPAIR AREAS ARE ESTIMATED FROM 4-14-05 SURVEY WORK. ACTUAL LOCATIONS AND QUANTITIES OF REPAIRS SHALL BE SHOWN BY THE ENGINEER ON THE AS-BUILT PLANS FOR THIS SECTION.