

FAP RTE	SECTION	COUNTY	TOTAL SHEETS	SHEET NO.
681	116BR-1	FORD	37	28
STA.		TO STA.		
FED. ROAD DIST. NO.		ILLINOIS FED. AID PROJECT		

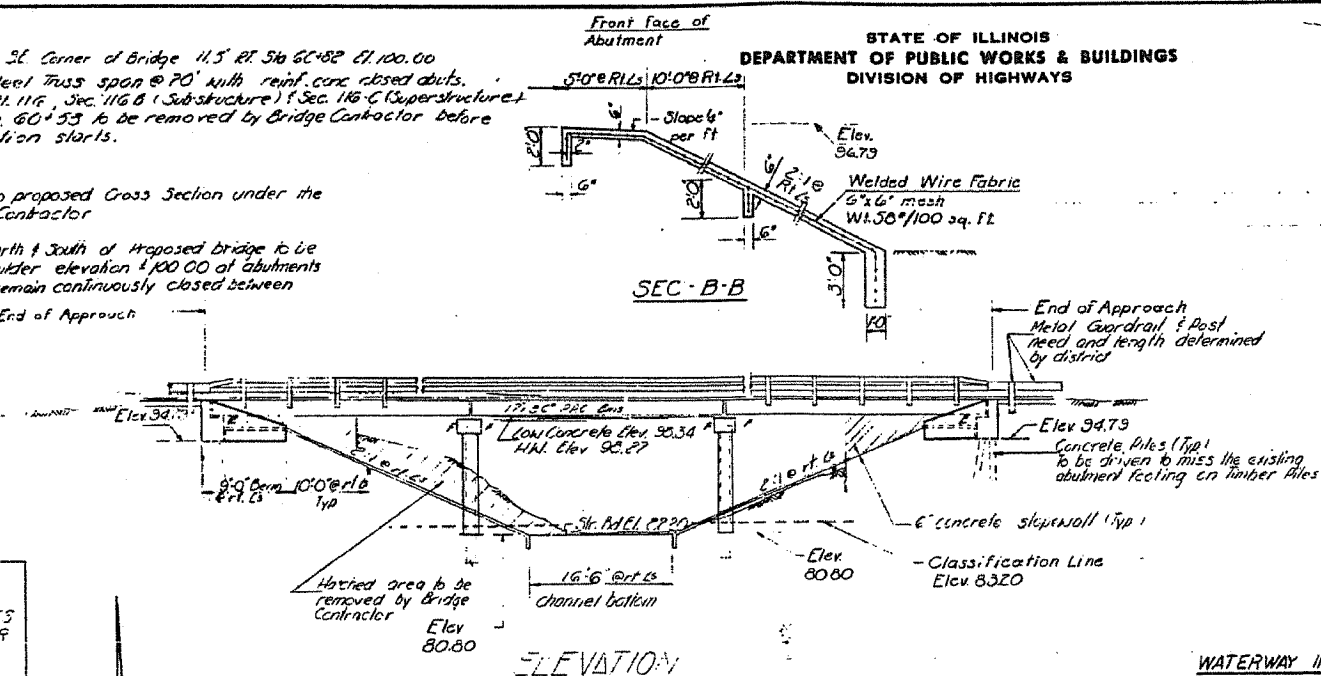
NO.	DESCRIPTION	QUANTITY	UNIT	PRICE	TOTAL
1	CONCRETE	104	CU YD	4.4	457.6
2	STEEL	104	LB	1.1	114.4
3	REINFORCING	104	LB	1.1	114.4
4	WELDED WIRE FABRIC	104	SQ FT	1.1	114.4
5	EXPANSION JOINTS	104	EA	1.1	114.4
6	PAINT	104	SQ YD	1.1	114.4
7	FORMS	104	SQ YD	1.1	114.4
8	LABOR	104	HR	1.1	114.4
9	TRUCKS	104	HR	1.1	114.4
10	OTHER	104	HR	1.1	114.4
TOTAL					1170.0

S.N.: 1/2 A 1/2 Alignment of SE Corner of Bridge 11.5 RT. Sta 60+53 El. 100.00
 Existing Structure. Steel Truss span @ 20' with reinf. conc. closed abuts.
 Built as SBI RT. 116, Sec. 116 B (Substructure) & Sec. 116 C (Superstructure)
 in 1929 @ Sta. 60+53 to be removed by Bridge Contractor before
 new construction starts.

Note Channel Adjustment to proposed Cross Section under the
 Bridge by Bridge Contractor

East & West Dikes North & South of Proposed bridge to be
 extended to road shoulder elevation 100.00 of abutments
 so that highwater will remain continuously closed between
 dikes.

STATE OF ILLINOIS
 DEPARTMENT OF PUBLIC WORKS & BUILDINGS
 DIVISION OF HIGHWAYS



STATION 60+53
 BUILT 1972 BY
 STATE OF ILLINOIS
 SBI RT. 116 SEC. 116 B
 LOADING HS20
 NAME PLATE
 5' x 3' x 1/2"

GENERAL NOTES

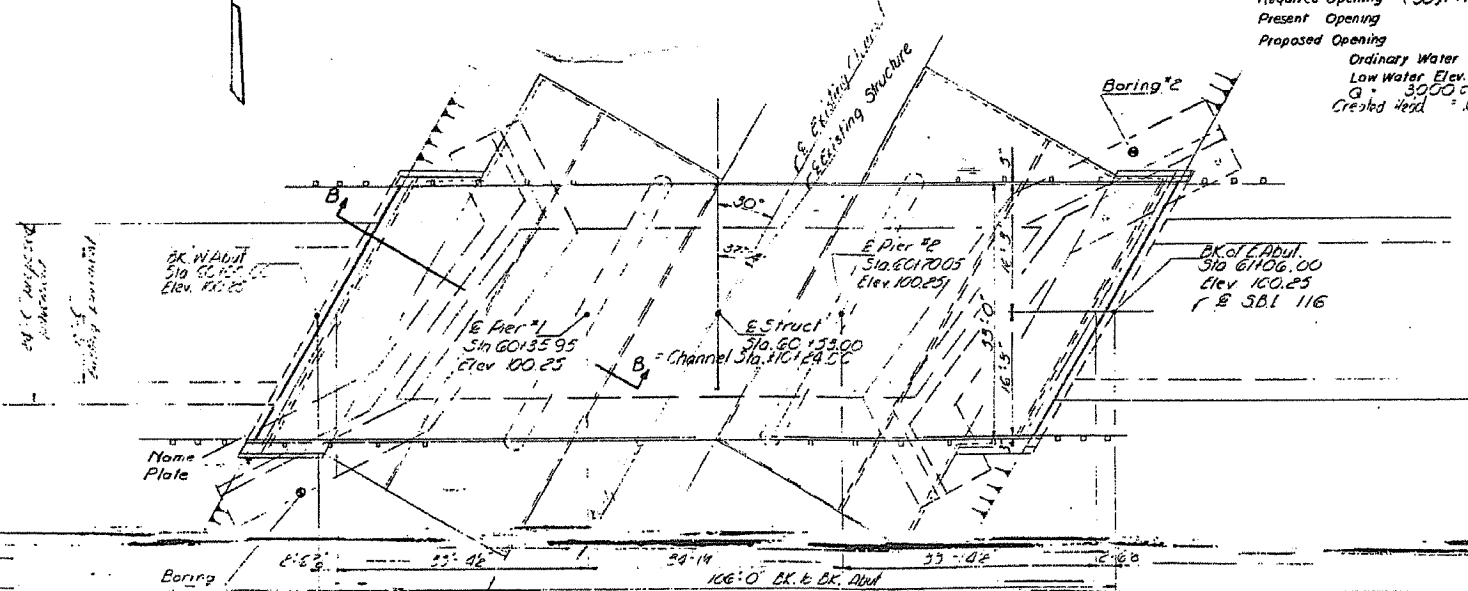
All reinforcement bars shall be lapped 24 diameters unless otherwise shown.
 The Basic Lead Silico Chromate paint system shall be used for shop and field painting of structural steel.
 Expansion guards which are not cast in the precast unit shall be fabricated and erected in accordance with Article 503.08 (c) of the Standard Specifications and are included in quantity of structural steel.
 Slope wall shall be reinforced with welded wire fabric 6"x6" mesh, weighing 58# per 100 sq. ft.
 Layout of slope walls may be varied in the field to suit ground conditions as directed by the Engineer.
 Class A (B) excavations for structures include excavation for slope wall.
 An alternate strand pattern using Extra High Strength Prestressing strand (270 ksi) is permitted.
 The contractor shall drive two test piles in the permanent locations, one at E. Abutment; one at pier 1 as directed by the Engineer before ordering the remainder of piles.

WATERWAY INFORMATION

Drainage Area	31.34 Sq. Mi.
Character Level, Rolling, Cultivated	
Required Opening (50yr flood)	690 Sq. Ft.
Present Opening	630 Sq. Ft.
Proposed Opening	700 Sq. Ft.
Ordinary Water Elev.	
Low Water Elev.	Q = 3000 cfs
Crested Head	0.07

TOTAL BILL OF MATERIAL

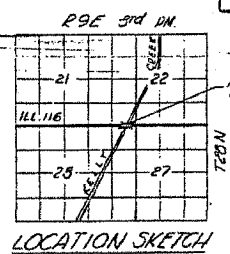
Item	Unit	Super	Sub	Total
Channel Excavation	Cu. Yds		520	520
Class A Excavation for Struct.	Cu. Yds		80	80
Class B Excavation for Struct.	Cu. Yds		100	100
Furn. & Erecting PRC Deck Bms (17")	Sq. Ft.	8864		8864
Class A Concrete	Cu. Yds		153.2	153.2
Reinforcement Bars	Lbs.		10270	10270
Structural Steel	Lbs.	1680		1680
Str-1 Railing Type N	Lin. Ft.	204		204
Str-1 Piles	Lin. Ft.		1330	1330
1021 Piles (Concrete)	Each		2	2
Coal Tar Inter-layer Prot Coat	Sq. Yds	388		388
Name Plates	Each		1	1
Slope Wall (6")	Sq. Yds		600	600
Removal of Existing Structures	Ea.		1	1
Preformed JT Sealer	Lin. Ft.		78	78
Bit Conc. Surf. Course Class I	Tons		42.8	42.8



DESIGN STRESSES

DESIGNED	EXAMINED	FIELD UNITS	PRESTR. PRECAST UNITS
Checked: GB Miller	Checked: H G Baumann	$f_c = 5000$ psi	$f_c = 5000$ psi
Drawn: J. G.	Approved: Robert H. Hoffmann	$f_s = 75$ psi Featring	$f_s = 4000$ psi
Checked: J. G.		$f_s = 20,000$ psi Reinf.	$f_s = 240,000$ psi (Strands 7/8")
		$n = 10$	$f_s = 175,600$ psi (Strands 7/8")
			Allow 25 #/sq. ft. for future A.S.

LOADING HS20-44



SBI RT. 116 OVER KELLY CREEK
 SBI RT. 116 SEC. 116 B R
 FORD COUNTY
 STATION 60+53