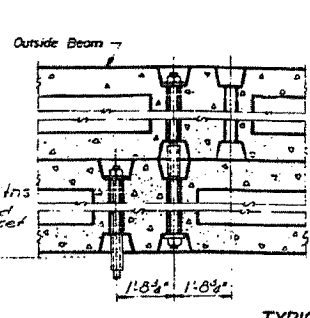
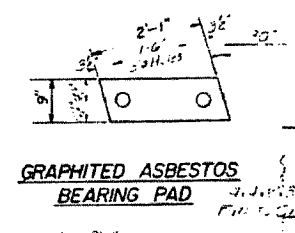
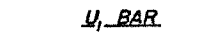
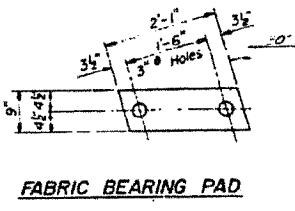


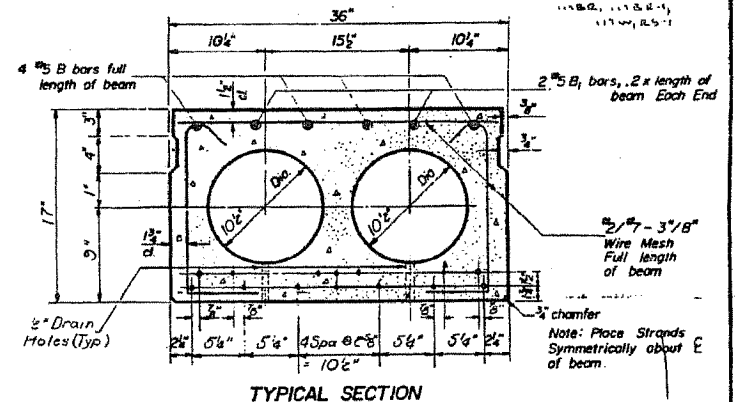
FAP RTE	SECTION	COUNTY	TOTAL SHEETS	SHEET NO.
681	116BR-1	FORD	37	29
STA.		TO STA.		
FED. ROAD DIST. NO.		ILLINOIS FED. AID PROJECT		

STATE OF ILLINOIS
DEPARTMENT OF PUBLIC WORKS & BUILDINGS
DIVISION OF HIGHWAYS

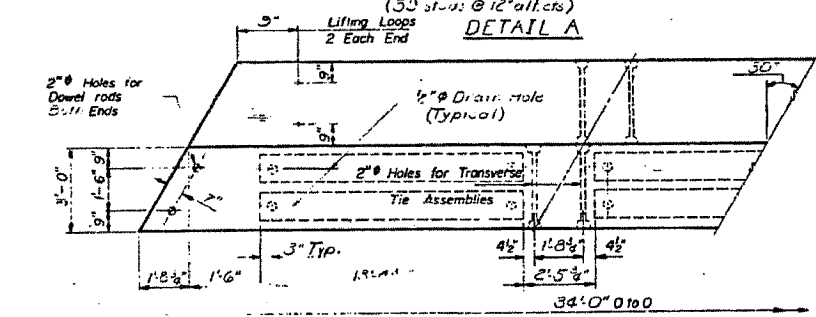
REVISED	DATE	BY	REASON
1	11-19-65	FC	ISSUED
2	11-19-65	FC	ISSUED



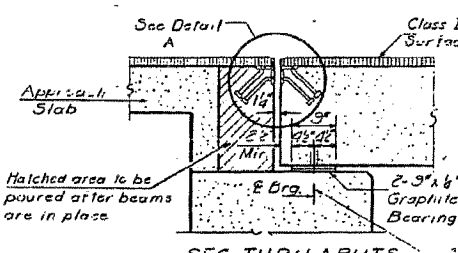
TYPICAL TRANSVERSE TIE ASSEMBLY



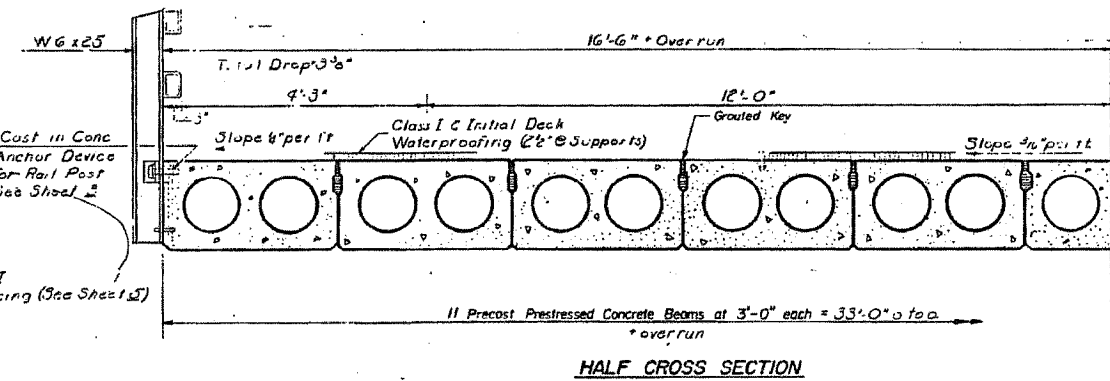
TYPICAL SECTION
14 - 7/16" Strands Each Strand Stressed to 18,900 lbs.
7 Strands 1 1/2" up 7 Strands 3 1/4" up



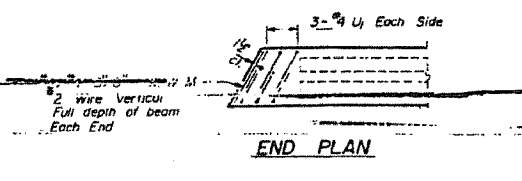
PLAN



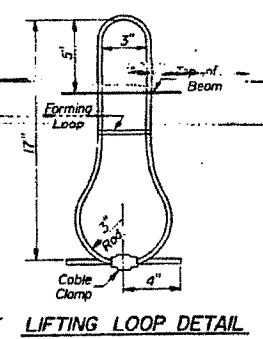
SEC. THRU ABUTS
(All Dimensions @ R.L.S.)



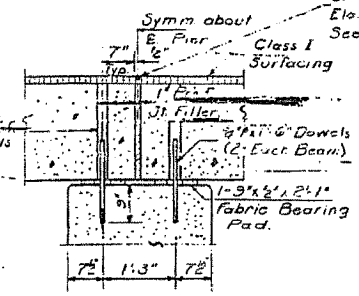
HALF CROSS SECTION



END PLAN



LIFTING LOOP DETAIL



SEC. THRU PIERS
(All Dimensions @ R.L.S.)

GENERAL NOTES

Pressing steel shall be non-galvanized high strength, stress-relieved 7-wire strand. The nominal diameter shall be 7/8" and the nominal cross-sectional area shall be 0.109 sq. in.. Lifting loops shall be 1/2" diameter, 6x19 class wire rope with fiber core and shall have a minimum ultimate tensile strength of 10,700 lbs.

The 1" rods in the transverse tie assembly shall be tightened to tension and the threads set. Pockets that receive transverse tie bar on outside beam shall be filled with grout after transverse tie assembly is in place.

Longitudinal shear keys shall be packed with a very dry mix of 2-1 sand and P.C. mortar. After beams have been erected, holes for the dowel anchors shall be drilled into the sub-structure. Grout dowels of 1/2" diameter, 6x19 class wire rope with fiber core and shall have a minimum ultimate tensile strength of 10,700 lbs.

Dowel rods shall be ASTM A-306 or ASTM A-315. Transverse tie rods shall be ASTM A-306, Grade 70-80.

After fabrication the transverse tie assemblies (tie rods, nuts, washers and sleeves) shall be hot-dipped, galvanized in accordance with A.S.T.M. Designation: A153.

Cost of reinforcement and accessories cast into the beam, of bearing pads, of armor angles, and of grouting longitudinal shear keys is included in unit price bid for "Precast Prestressed Concrete Deck Beams."

BILL OF MATERIAL

Bar	No.	Size	Length	Shape
Precast Prestressed Concrete Deck Beams		Sq. Ft.	3,366	

DECK BEAM DETAILS
S.B.I. RT. 116 SEC. 116 BR
FORD COUNTY
STA. 60+53

DESIGNED: J. J. 3-22	EXAMINED: January 15, 1971
CHECKED: G. M. 11-6	PASSED: H. G. Bennett
DRAWN: FC	APPROVED: Richard H. Holterman
CHECKED: G. M.	

PD-1-L 11-19-65 Rev 5-20-68