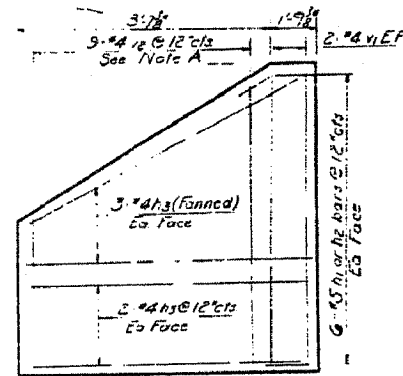


FAP RTE	SECTION	COUNTY	TOTAL SHEETS	SHEET NO.
681	116BR-1	FORD	37	31
STA.		TO STA.		
FED. ROAD DIST. NO.		ILLINOIS FED. AID PROJECT		

STATE OF ILLINOIS
DEPARTMENT OF PUBLIC WORKS & BUILDINGS
DIVISION OF HIGHWAYS

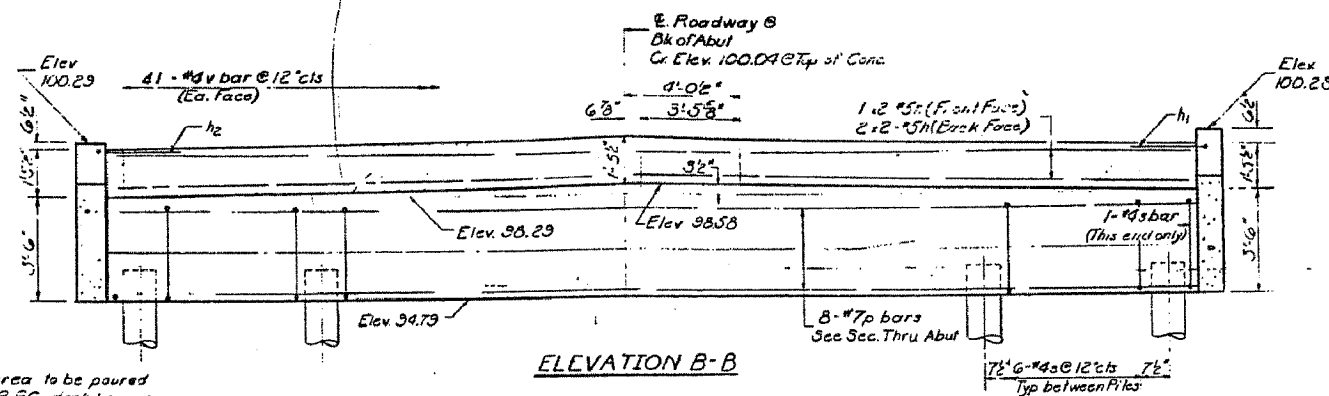
NO. OF SHEETS	NO. OF SHEETS	NO. OF SHEETS	NO. OF SHEETS
104	47		

SHEET NO. 9
7 SHEETS



VIEW A-A
(See Note A for Dim. and Point)

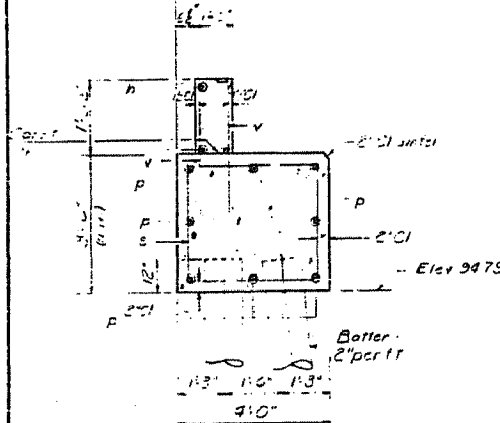
Note A: Order #2 bars full length, cut to fit in field. Use remainder of bars in other face.



ELEVATION B-B

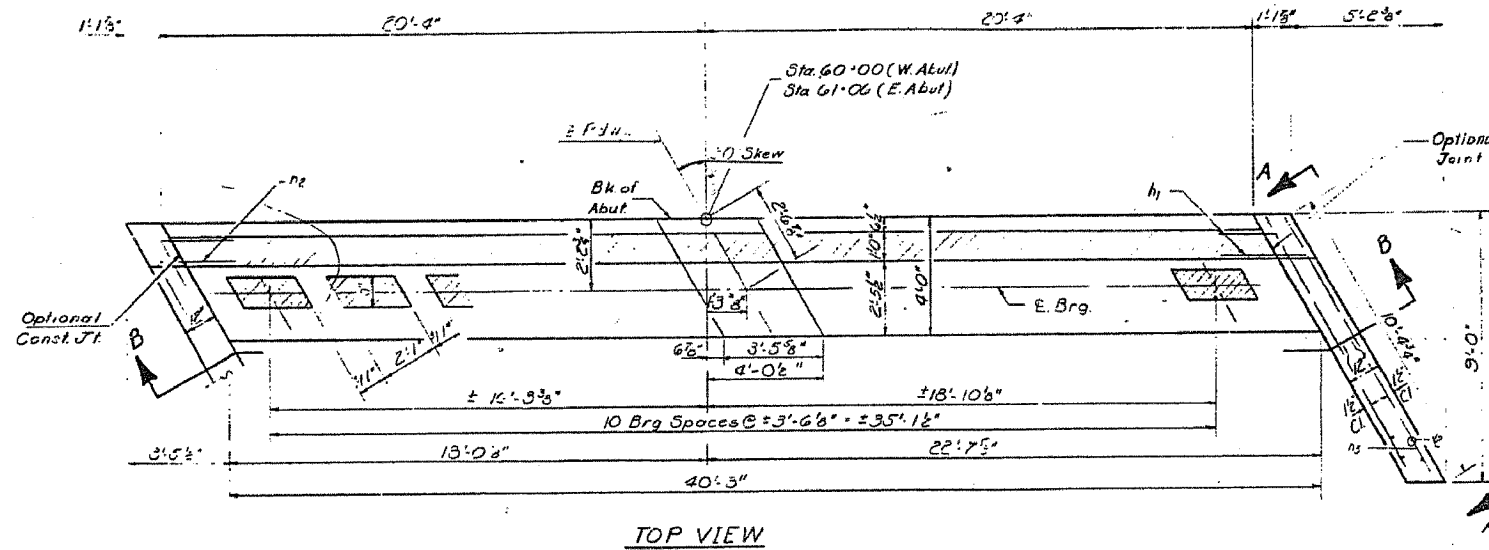
Note: Hatched area to be poured after the P.F.C. deck beams have been placed.

Back Abut 2'-2 1/2" E. Brg.

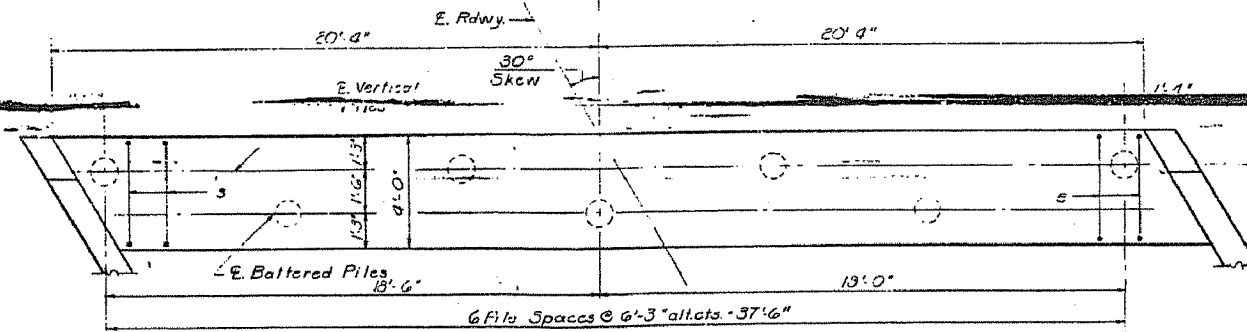


SEC THRU ABUT

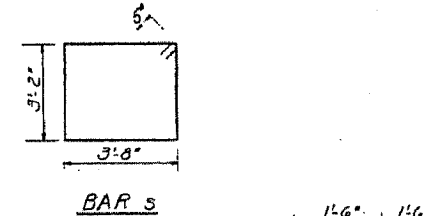
PILE CAP
Type - Concrete Pile
Capacity - 36 Tons
Ext. Length - 50'-0"



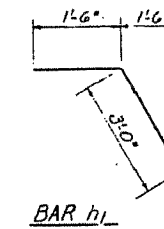
TOP VIEW



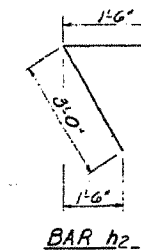
PLAN - PILE CAP



BAR S



BAR h1



BAR h2

TWO ABUTMENTS
BILL OF MATERIAL

Bar	No	Size	Length	Shape
h	12	1 1/2	21'-0"	—
h1	24	1 1/2	4'-6"	—
h2	24	1 1/2	4'-6"	—
h3	40	1 1/2	10'-0"	—
p	16	1 1/2	40'-6"	—
s	72	3/4	14'-6"	□
v	164	1/2	2'-3"	—
v1	16	1/2	5'-3"	—
v2	36	1/2	7'-0"	—
Class X Concrete		cu. yds.	55.0	
Reinforcement Steel		Lbs.	4210	
Concrete Piles		Lin. Ft.	650	
Test Piles (Concrete)		Ea.	1	

EAST & WEST ABUTMENTS
S.B.I. 116 BR
FORD COUNTY
STA. 60+53

DESIGNED: J. Miller	EXAMINED: J. Miller
CHECKED: S.R. Miller	PASSED: W. Bannerman
DRAWN: F. Coffin	APPROVED: Richard A. Holten
CHECKED: G.M.	