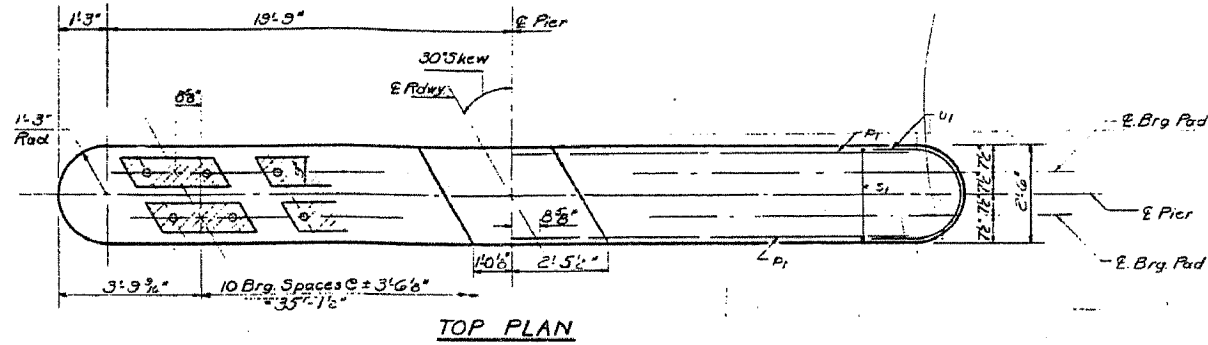
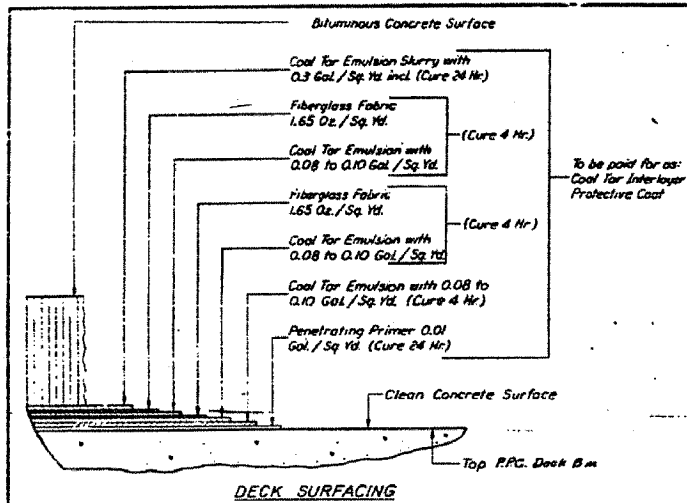


FAP RTE	SECTION	COUNTY	TOTAL SHEETS	SHEET NO.
681	116BR-1	FORD	37	32
STA.	TO STA.			
FED. ROAD DIST. NO.	ILLINOIS	FED. AID PROJECT		

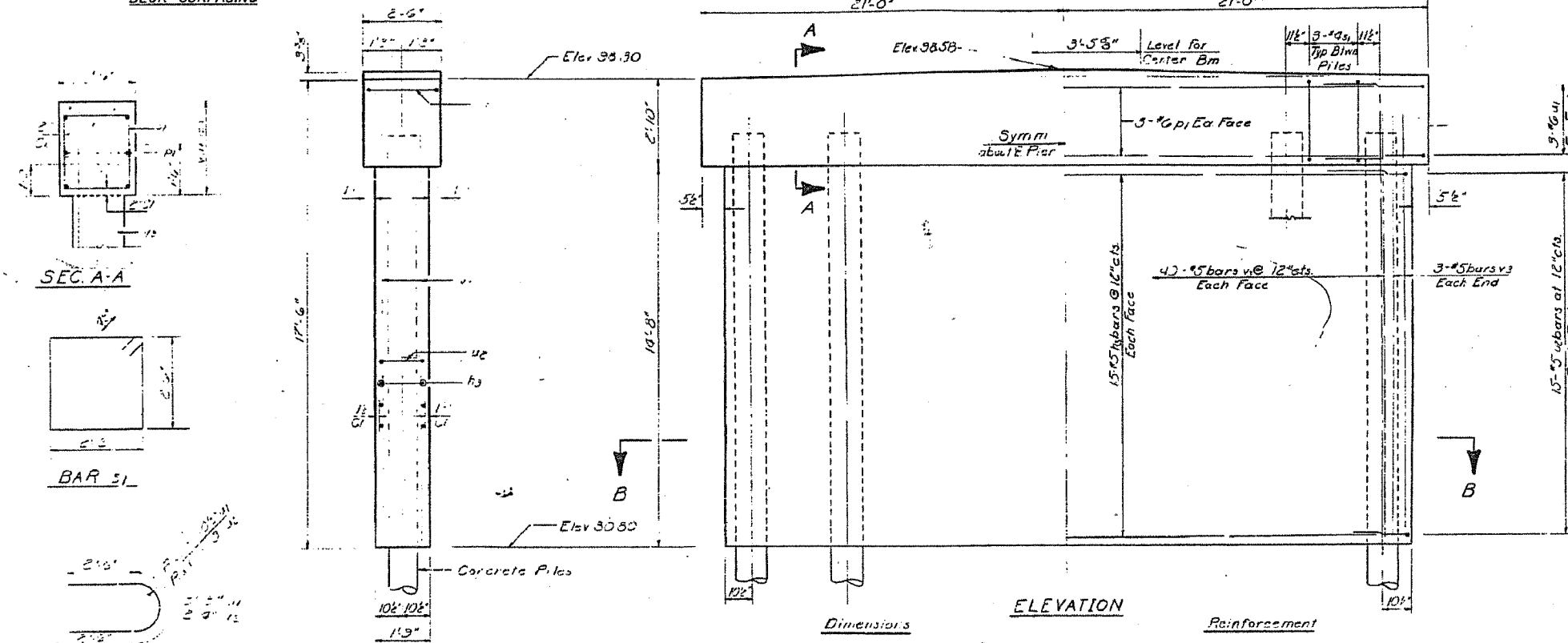
STATE OF ILLINOIS
DEPARTMENT OF PUBLIC WORKS & BUILDINGS
DIVISION OF HIGHWAYS

PROJECT NO.	SECTION	SHEET NO.	TOTAL SHEETS	SHEET NO.
66561	116BR-1	104	49	7

Note: All ledges shall have standard 3/4" chamfers except as noted



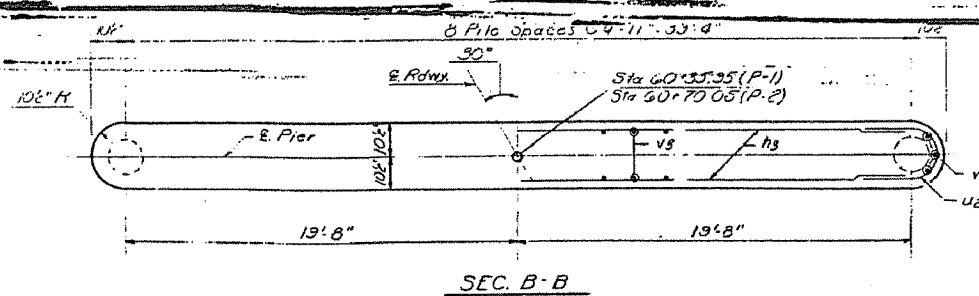
PILE DATA
Type - Concrete
Capacity - 35 Tons
Est Length - 40'-0"
No Req'd - 17'-1 Test Pile at Pier 1



**TWO PIERS
BILL OF MATERIAL**

Bar	No.	Size	Length	Shape
h3	60	#5	33'4"	—
h1	12	#6	33'6"	—
s1	48	#4	10'1"	□
u1	12	#6	8'3"	—
u2	60	#5	7'4"	—
v3	172	#5	16'3"	—
Class A Concrete		Cu. Yds	1002	
Reinforcement Bars		Lbs.	7200	
Concrete Piles		Lin. Ft.	680	
Test Piles (Cont)		Eq.	1	

DESIGNED: [Signature]
CHECKED: G.R. Miller
DRAWN: [Signature]
CHECKED: [Signature]
EXAMINED: [Signature]
PASSED: [Signature]
APPROVED: [Signature]



PIER 1 & PIER 2
S.B.I. RT. 116 SEC. 116 BR
FORD COUNTY
STA. 60-33