

STATE OF ILLINOIS
DEPARTMENT OF TRANSPORTATION
DIVISION OF HIGHWAYS

PLANS FOR PROPOSED
FEDERAL AID HIGHWAY

FAP ROUTE 749 (IL 133)
SECTION 119(BR-2 & BR-3)
PROJECT BHF-749(017)
MOULTRIE COUNTY

C-95-003-04

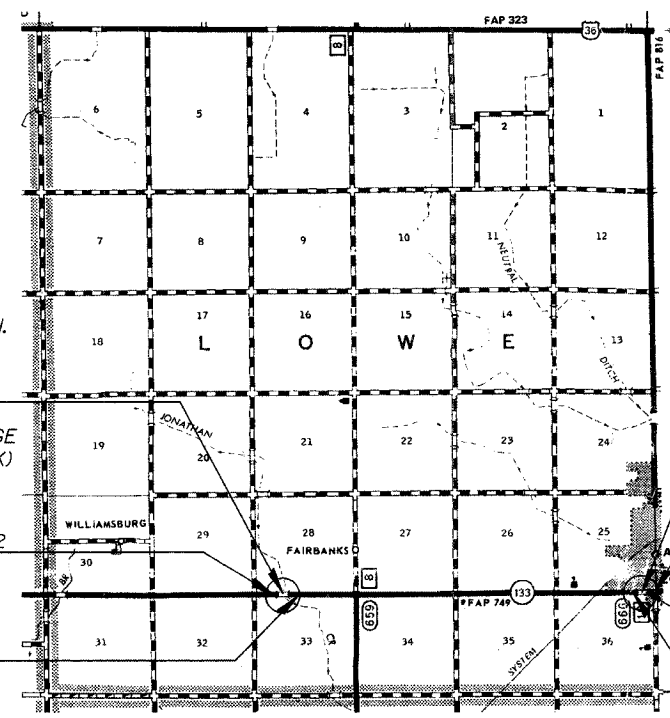
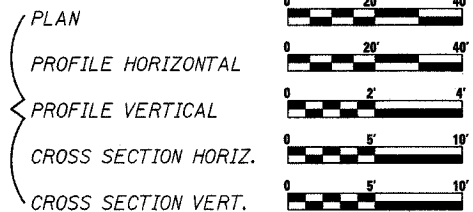
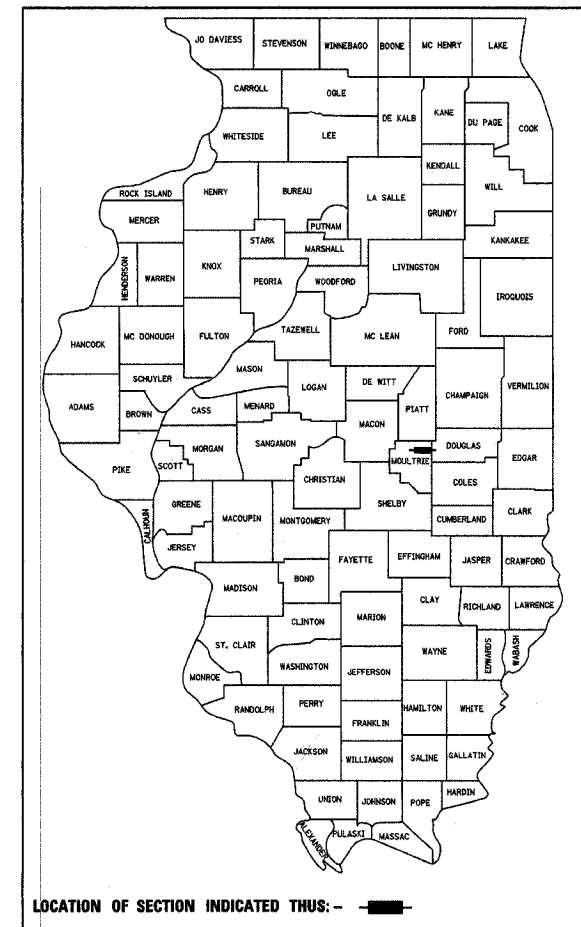
BRIDGE SUPERSTRUCTURE REPLACEMENTS
OVER JONATHAN CREEK 4.0 MI. EAST OF LOVINGTON
OVER DRAINAGE DITCH WEST EDGE OF ARTHUR

F.A.P. RTE.	SECTION	COUNTY	TOTAL SHEETS	SHEET NO.
749	119(BR-2&BR-3)	MOULTRIE	37	1

CONTRACT NO. 70347
D-95-003-04

INDEX OF SHEETS

SEE SHEET NO. 2 FOR INDEX OF SHEETS
SEE SHEET NO. 2 FOR LIST OF ILLINOIS D.O.T. HIGHWAY STANDARDS



SECTION 119(BR-2 & BR-3) INCLUDES
REHABILITATION OF SN 070-0035
EXISTING SINGLE SPAN P.P.C. DECK BEAM BRIDGE
(1 SPAN @ 34.0 BK. TO BK., 41.0' O. TO O. DECK)
CARRYING IL ROUTE 133 OVER JONATHAN CREEK

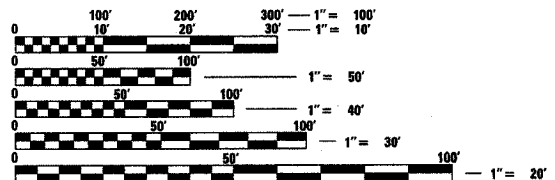
SECTION 119(BR-2 & BR-3) INCLUDES
REHABILITATION OF SN 070-0016
EXISTING SINGLE SPAN P.P.C. DECK BEAM BRIDGE
(1 SPAN @ 42'-2 3/4" BK. TO BK., 41.0' O. TO O. DECK)
CARRYING IL ROUTE 133 OVER DRAINAGE DITCH

BEGIN SECTION 119BR-2
STA. 256+27

END SECTION 119BR-3
STA. 1+37

END SECTION 119BR-2
STA. 261+20

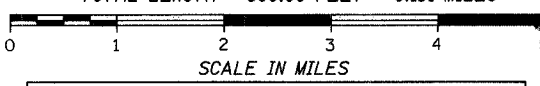
STA. EQUATION
STA. 453+20 BK = STA. 0+00 AH
BEGIN SECTION 119BR-3
STA. 451+50



FULL SIZE PLANS HAVE BEEN PREPARED USING STANDARD
ENGINEERING SCALES. REDUCED SIZED PLANS WILL NOT
CONFORM TO STANDARD SCALES. IN MAKING MEASUREMENTS
ON REDUCED PLANS, THE ABOVE SCALES MAY BE USED.

CURRENT ADT = 1,700 (2003) SEC 119-BR-2
= 3,200 (2003) SEC 119-BR-3

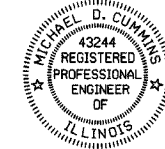
LENGTH OF SECTION:
SN 070-0035 = 493.00 FEET = 0.093 MILES
SN 070-0016 = 307.00 FEET = 0.058 MILES
TOTAL LENGTH = 800.00 FEET = 0.151 MILES



J.U.L.I.E.
JOINT UTILITY LOCATION INFORMATION FOR EXCAVATION
1-800-892-0123
LOWE TOWNSHIP

DESIGN DESIGNATION
N.A.

CUMMINS ENGINEERING CORPORATION
SPRINGFIELD, ILLINOIS



Michael D. Cummins (Signature)
ILLINOIS PROFESSIONAL NO. 43244
(Expires 11/30/05)

STATE OF ILLINOIS
DEPARTMENT OF TRANSPORTATION
DIVISION OF HIGHWAYS

SUBMITTED OCT 24 20 05
(Signature)
DEPUTY DIRECTOR OF HIGHWAYS, REGION 3 ENGINEER

December 9, 20 05
Mike Hine
ENGINEER OF DESIGN AND ENVIRONMENT

December 9, 20 05
Eric Horn
DIRECTOR OF HIGHWAYS, CHIEF ENGINEER

PRINTED BY THE AUTHORITY
OF THE STATE OF ILLINOIS

PROJECT ENGINEER: KENSIL GARNETT (217) 465-4181
CONSULTANT LIAISON: NANCY FASIG (217) 465-4181

CONTRACT NO. 70347