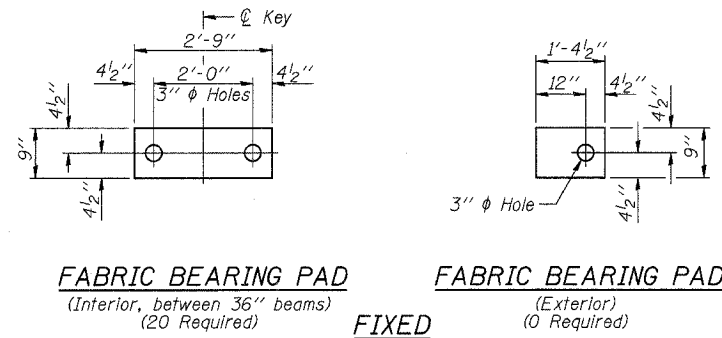


ROUTE NO.	SECTION	COUNTY	TOTAL SHEETS	SHEET NO.
F.A.P. 749	119(BR-2 & BR-3)	MOULTRIE	37	19
FED. ROAD DIST. NO. 5	ILLINOIS PROJECT			

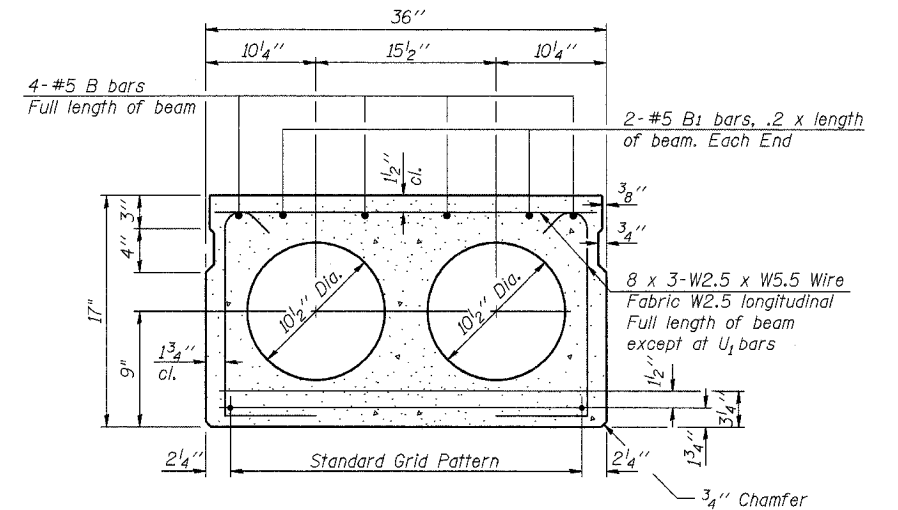
Sheet 4 of 8 CONTRACT #70347



**FABRIC BEARING PAD**  
(Interior, between 36" beams)  
(20 Required)

**FABRIC BEARING PAD**  
(Exterior)  
(0 Required)

**FIXED**

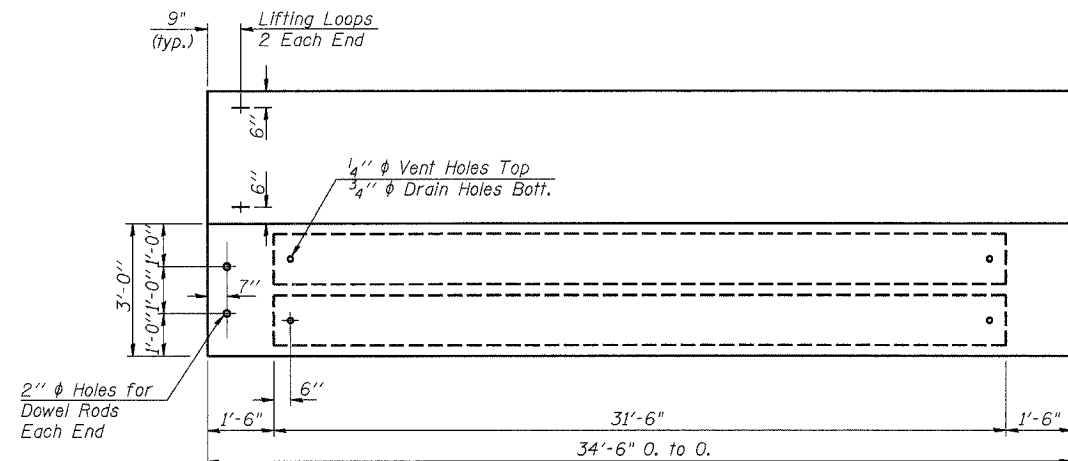


**TYPICAL SECTION**

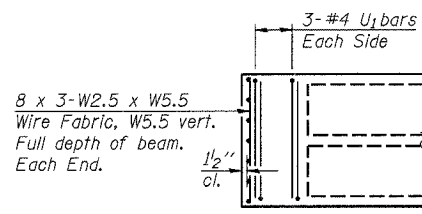
(11 Required)

1/2"  $\phi$  Strands, Each Strand Stressed to 30,900 Lbs.  
5-Strands 1 3/4" up, 4-Strands 3/4" up

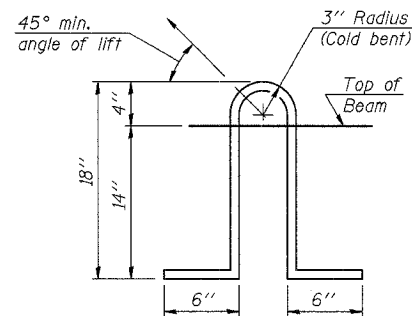
Note:  
Place strands symmetrically about  $\phi$  of beam.



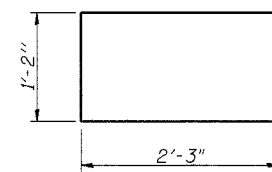
**PLAN**



**END PLAN**



**LIFTING LOOP DETAIL**



**BAR U1**

**NOTES**

Prestressing steel shall be uncoated high strength, low relaxation 7-wire strand, Grade 270.  
The nominal diameter shall be 1/2" and the nominal cross-sectional area shall be 0.153 sq. in.  
Lifting loops shall be 2-1/2"  $\phi$ -270 ksi strands, as shown.  
Non prestressing steel shall conform to AASHTO M31 or M322 Grade 60.  
The bearing seat surfaces shall be adjusted by shimming to assure firm and even bearing. Two 1/8" fabric adjusting shims of the dimensions of the exterior bearing pad shall be provided for each beam end (44 required total).  
Keyway surfaces shall be cleaned to remove form oil or other bond breaking material prior to shipment of the beams. Cleaning shall be done by sandblasting the keyway areas between top of the beam and the bottom edge of the key.  
Corrosion Inhibitor, as covered in the Special Provisions, shall be used in the concrete for precast prestressed concrete deck beams.  
Required Release Strength, f'ci, shall be 4,000 p.s.i.

**BILL OF MATERIAL**

Item	Unit	Quantity
Precast Prestressed Concrete Deck Beams (17" Depth)	Sq. Ft.	1,139

**SUPERSTRUCTURE**  
ILLINOIS ROUTE 133 OVER  
JONATHAN CREEK  
F.A.P. ROUTE 749 - SEC. 119(BR-2 & BR-3)  
MOULTRIE COUNTY  
STATION 258+73.50  
STRUCTURE NO. 070-0035

CUMMINS ENGINEERING CORPORATION  
JOB #: 2114.4  
FILE: 21144BEAMS  
DATE: 10/12/05

DESIGNED	T.S.H.
CHECKED	R.V.B.
DRAWN	T.S.H.
CHECKED	M.D.C.

PD-3-SA

10-22-04