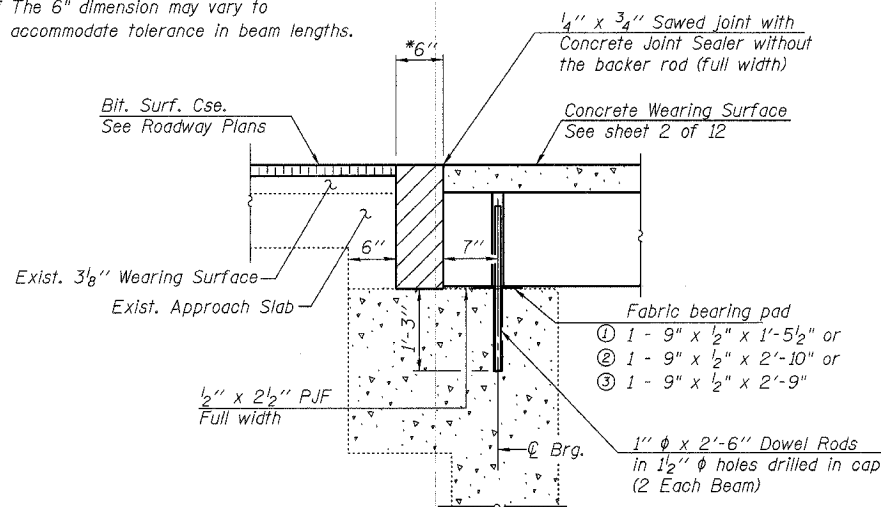
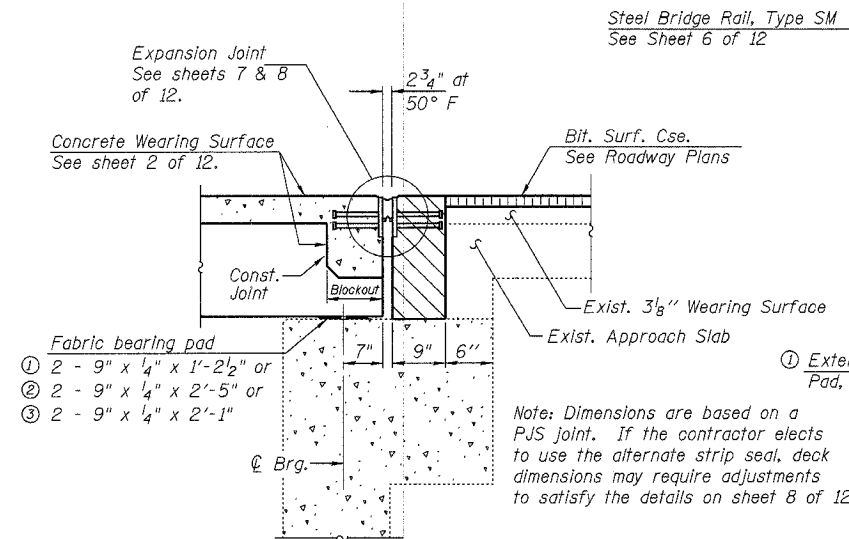


ROUTE NO.	SECTION	COUNTY	TOTAL SHEETS	SHEET NO.
F.A.P. 749	119(BR-2 & BR-3)	MOULTRIE	37	26
FED. ROAD DIST. NO. 5		ILLINOIS PROJECT	Sheet 3 of 12 CONTRACT #70347	

* The 6" dimension may vary to accommodate tolerance in beam lengths.



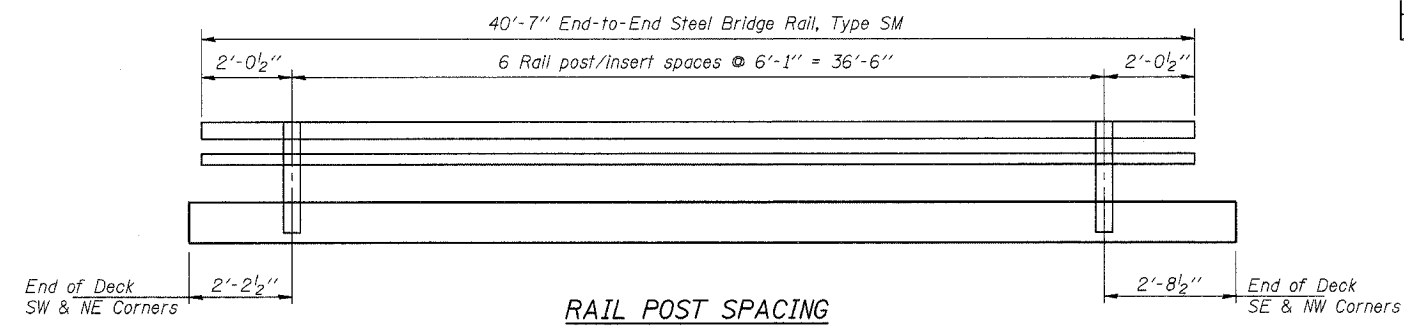
SECTION THRU W. ABUTMENT
Dimensions at Rt. L's



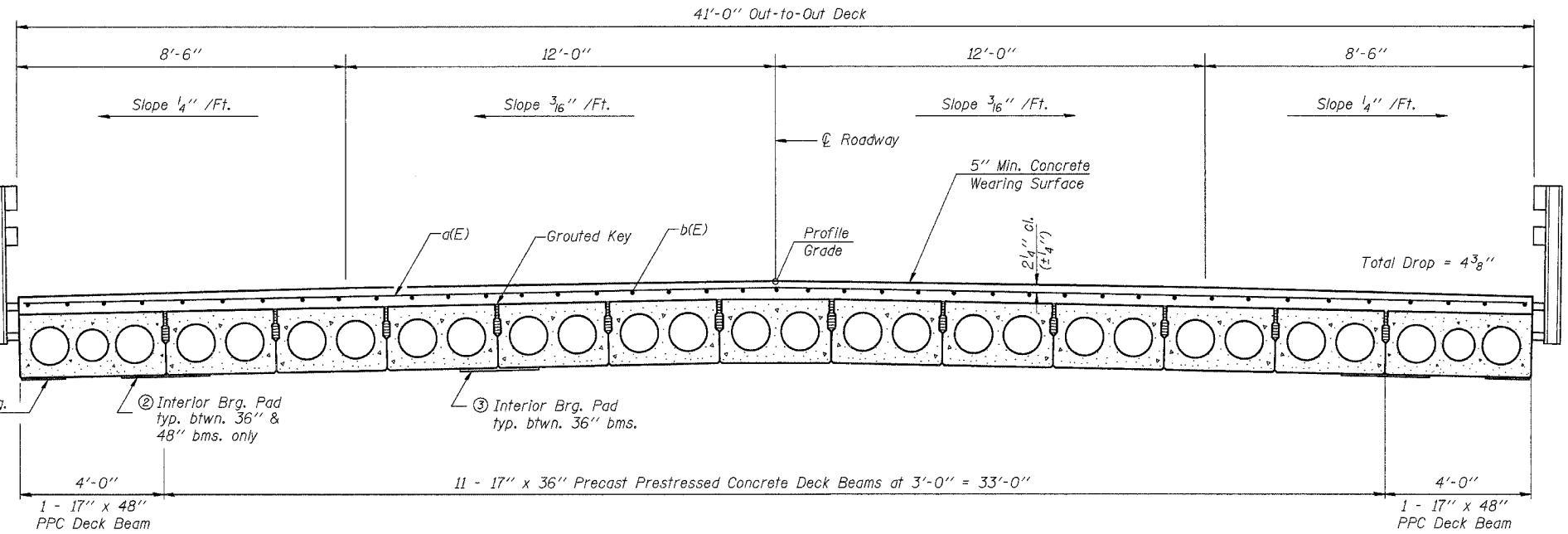
SECTION THRU E. ABUTMENT
Dimensions at Rt. L's

Notes :
Ends of beams shall be aligned at the expansion joint. Any lineal variation in the beam lengths shall be placed at the fixed joint.
After beams have been erected, temporary retainers shall be installed at the E. Abut. Holes for dowel rods shall be drilled into the W. Abut. and dowel rods placed. Dowel holes shall be filled with non-shrink grout to the top of beam and allowed to cure a minimum of 24 hrs. prior to grouting the shear keys.
Dowel rods drilled in cap are included in the cost of Precast Prestressed Concrete Deck Beams (17" Depth).
Concrete wearing surface (including blockout) to be poured after grouting the shear keys. Volume of concrete in blockout is included with Concrete Wearing Surface.
Hatched area to be poured after concrete wearing surface (including blockout) is in place. Quantity included with Concrete Structures on sheets 10 and 11 of 12.
See sheets 4 and 5 of 12 for bearing pad details.
See sheet 12 of 12 for temporary retainer details.

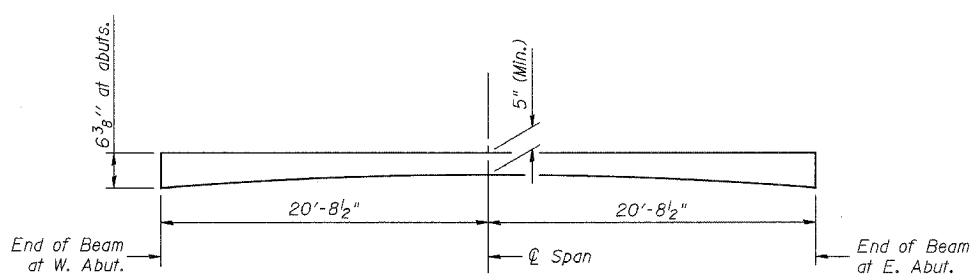
DESIGNED	R.V.B.
CHECKED	T.S.H.
DRAWN	N.L.D.
CHECKED	M.D.C.



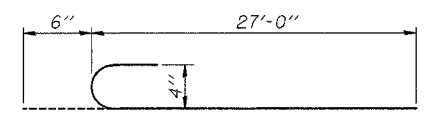
RAIL POST SPACING
(S. Rail Looking North, N. Rail Looking South)
(See Sheet 6 of 12 for details)



CROSS SECTION
Dimensions at Rt. L's



REINFORCED CONCRETE WEARING SURFACE PROFILE
(Concrete wearing surface at blockout at expansion end of beam not shown.)



BAR a(E)

SUPERSTRUCTURE BILL OF MATERIAL

Bar	No.	Size	Length	Shape
a(E)	84	#4	27'-6"	C
a ₁ (E)	18	#5	19'-0"	—
b(E)	82	#4	21'-4"	—
Reinforcement Bars, Epoxy Coated			Pound	3,070
Concrete Wearing Surface			Sq. Yd.	189

Reinforcement bars designated (E) shall be epoxy coated.

SUPERSTRUCTURE DETAILS
ILLINOIS ROUTE 133 OVER DRAINAGE DITCH
F.A.P. ROUTE 749 - SEC. 119(BR-2 & BR-3)
MOULTRIE COUNTY
STATION 453+12.03
STRUCTURE NO. 070-0016

CUMMINS ENGINEERING CORPORATION	JOB #: 2114.3
	FILE: 21143SUPER
	DATE: 10/12/05