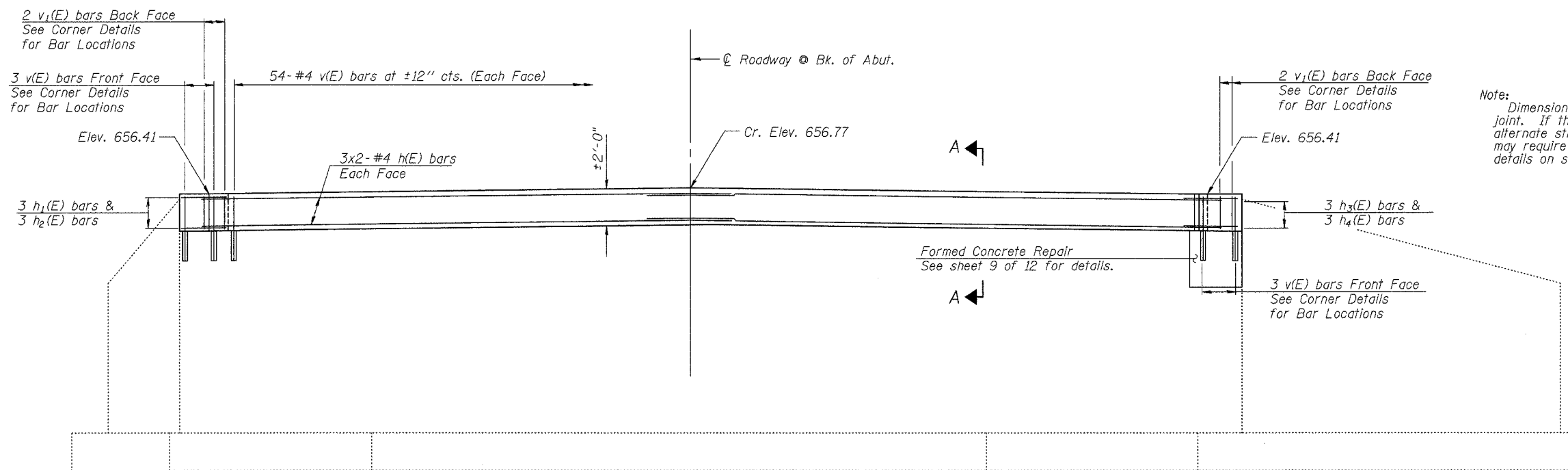
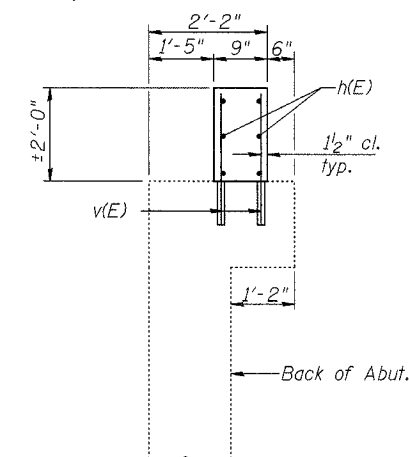


ROUTE NO.	SECTION	COUNTY	TOTAL SHEETS	SHEET NO.
F.A.P. 749	119(BR-2 & BR-3)	MOULTRIE	37	34
FED. ROAD DIST. NO. 5	ILLINOIS PROJECT			

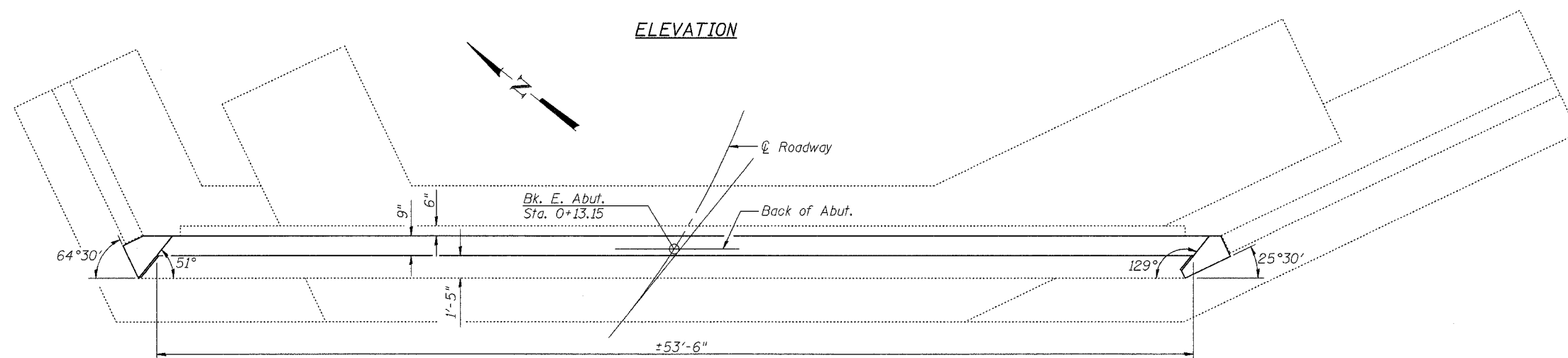
Sheet 11 of 12 CONTRACT #70347



Note:  
Dimensions are based on a PJS joint. If the contractor elects to use the alternate strip seal, deck dimensions may require adjustments to satisfy the details on sheet 8 of 12.



SECTION A-A



ELEVATION

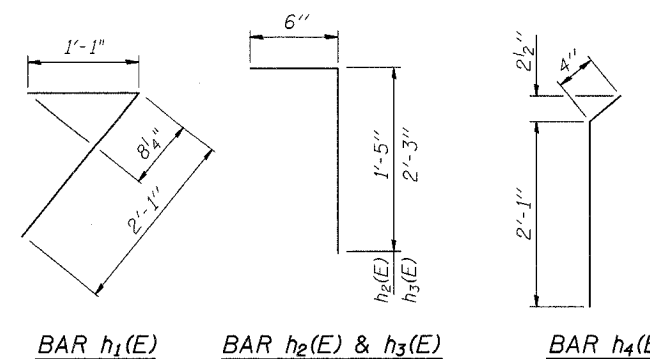
PLAN

**EAST ABUTMENT  
BILL OF MATERIAL**

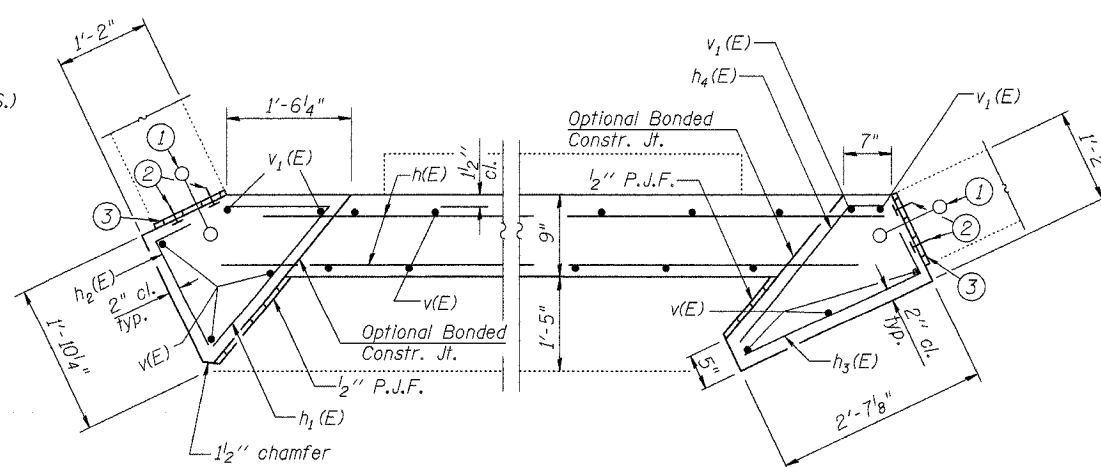
Bar	No.	Size	Length	Shape
h(E)	12	#4	28'-9"	
h <sub>1</sub> (E)	3	#4	3'-2"	7
h <sub>2</sub> (E)	3	#4	1'-11"	7
h <sub>3</sub> (E)	3	#4	2'-9"	7
h <sub>4</sub> (E)	3	#4	2'-5"	7
v(E)	114	#4	2'-7"	
v <sub>1</sub> (E)	4	#4	1'-8"	
Reinforcement Bars, Epoxy Coated		Pound	460	
Concrete Structures		Cu. Yd.	3.3	
Structure Excavation		Cu. Yd.	5.5	

Notes:  
All exposed edges shall have 3/4" chamfers unless noted otherwise.  
Concrete Structures shown are to be poured after the Concrete Wearing Surface is in place and cured.  
Epoxy grout v(E) bars into drilled holes according to Section 584 of the Standard Specifications. Locate holes to miss existing reinforcement. Min. embedment = 9".  
Reinforcement bars designated (E) shall be epoxy coated.  
Bars indicated thus 3x2-#5 etc. indicates 3 lines of bars with 2 lengths per line.

**MIN BAR LAPS**  
#4 bar = 1'-10"



- Existing water seal, to remain. See existing plans for details.
- Concrete Nails (Flat Hd. C.S.) 1" long at 12" cts. vertical, cost included with Concrete Structures.
- 1/2" Premolded Joint Filler, cost included with Concrete Structures.



CORNER DETAILS

DESIGNED	R.V.B.
CHECKED	T.S.H.
DRAWN	N.L.D.
CHECKED	M.D.C.

**EAST ABUTMENT**  
ILLINOIS ROUTE 133 OVER  
DRAINAGE DITCH  
F.A.P. ROUTE 749 - SEC. 119(BR-2 & BR-3)  
MOULTRIE COUNTY  
STATION 453+12.03  
STRUCTURE NO. 070-0016

CUMMINS ENGINEERING CORPORATION  
JOB #: 2114.3  
FILE: 21143ABUTS  
DATE: 10/12/05