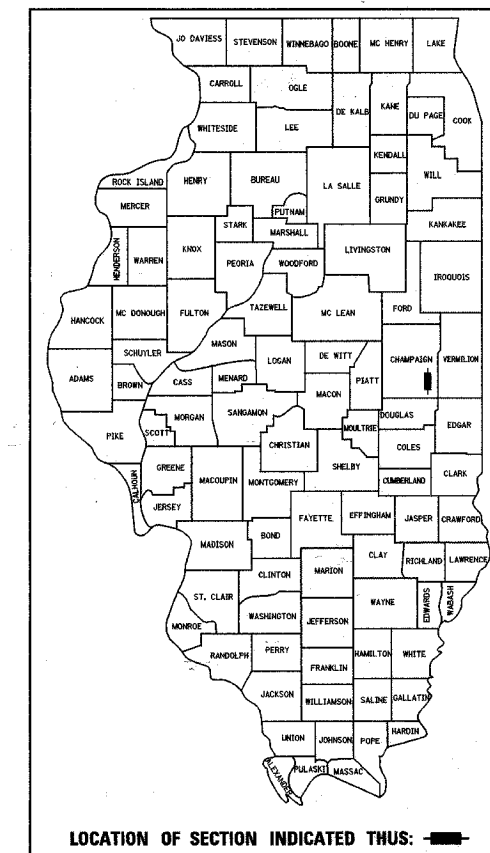


F.A.P. RTE.	SECTION	COUNTY	TOTAL SHEETS	SHEET NO.
836	118BR	CHAMPAIGN	29	1
FED. ROAD DIST. NO.		ILLINOIS FED. AID PROJECT		

STATE OF ILLINOIS
DEPARTMENT OF TRANSPORTATION
DIVISION OF HIGHWAYS
**PLANS FOR PROPOSED
HIGHWAY IMPROVEMENT**

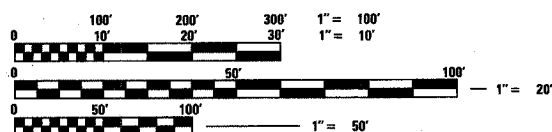
D-95-033-04



FOR INDEX OF SHEETS, SEE SHEET NO. 2
FOR SUMMARY OF QUANTITIES, SEE SHEET NO. 3

F.A.P. ROUTE 836 (IL. RTE. 49)
SECTION 118BR
CHAMPAIGN COUNTY
PROJECT: **BHF - 836(025)**
C-95-034-04

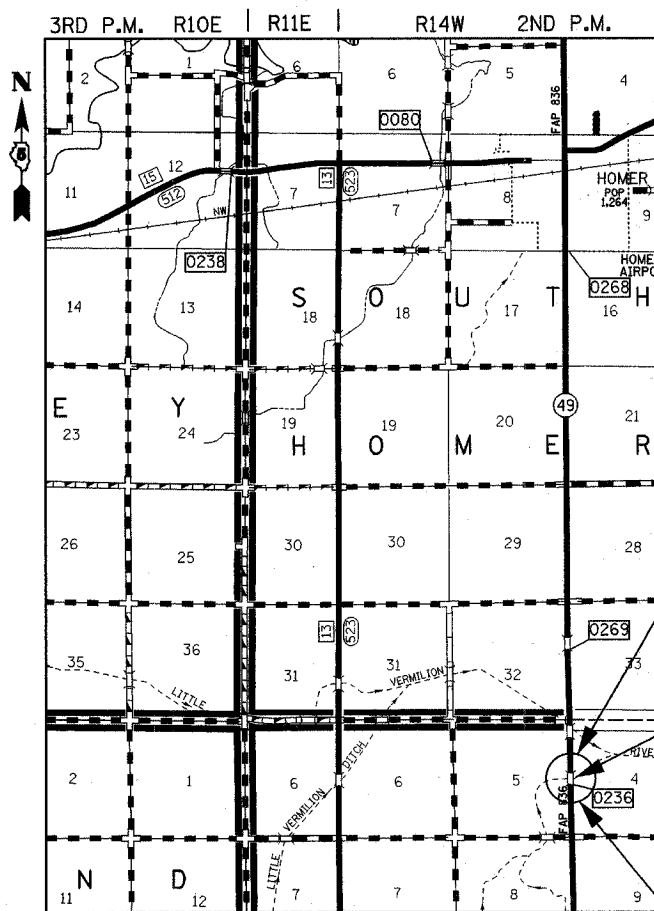
BRIDGE BEAM REPLACEMENT & BRIDGE NEW DECK



SCALES
 PLAN 1" = 20'
 PROFILE HORIZ. 1" = 20'
 PROFILE VERT. 1" = 5'
 CROSS SECTIONS 1" = 5'
 1" = 2 1/2'

FULL SIZE PLANS HAVE BEEN PREPARED USING STANDARD ENGINEERING SCALES, REDUCED SIZED PLANS WILL NOT CONFORM TO STANDARD SCALES, IN MAKING MEASUREMENTS ON REDUCED PLANS, THE ABOVE SCALES MAY BE USED.

FOR UNDERGROUND UTILITY LOCATIONS CALL
J.U.L.I.E. TOLL FREE
1-800-892-0123



SECTION 118BR
PROJECT BR 0836 (—) ENDS
STA. 666 + 00.00

PROPOSED TWO SPAN BRIDGE
STR. NO. 010-0236
STA. 664 + 76.09
76'-0" BK. TO BK. ABUTMENTS
33'-0" STRUCTURE WIDTH
SKEW 30 DEGREES RT. FWD.

SECTION 118BR
PROJECT BR 0836 (—) BEGINS
STA. 663 + 35.00

LOCATION MAP
GROSS AND NET LENGTH OF PROJECT = 265 FEET = 0.050 MILES
ADT = 2900 (2005)

PROJECT ENGINEER: KENSIL GARNETT
CONSULTANT LIAISON: NANCY FASIG
PHONE: 217-465-4181

CONTRACT NO. 70390

STATE OF ILLINOIS
DEPARTMENT OF TRANSPORTATION
DIVISION OF HIGHWAYS

SUBMITTED: 08/18/05

[Signature]
DEPUTY DIRECTOR OF HIGHWAYS, REGION 3 ENGINEER

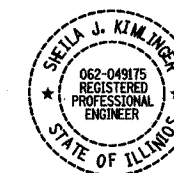
December 9, 2005

[Signature]
ENGINEER OF DESIGN AND ENVIRONMENT

December 9, 2005

[Signature]
DEPUTY DIRECTOR, DIVISION OF HIGHWAYS

BLANK, WESSELINK, COOK & ASSOCIATES
ENGINEERS - CONSULTANTS
DECATUR, ILLINOIS



[Signature]
SHEILA J. KIMLINGER, P.E.
DATE September 27, 2005
EXPIRES NOVEMBER 30, 2005

PRINTED BY THE AUTHORITY OF THE STATE OF ILLINOIS
CHAMPAIGN COUNTY