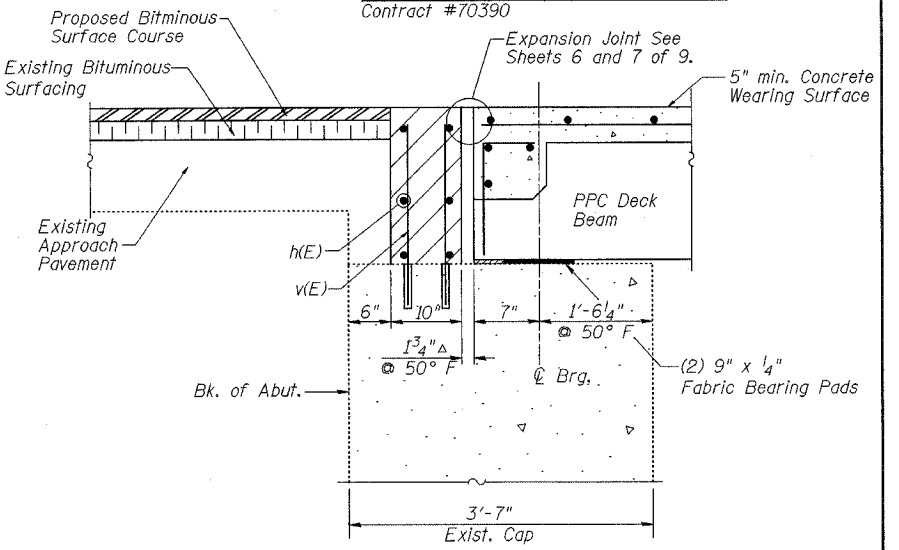
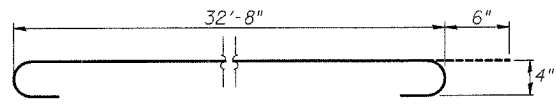


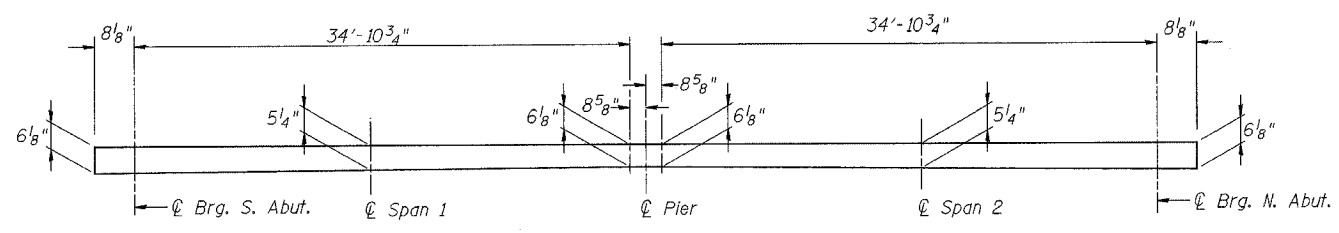
CROSS SECTION



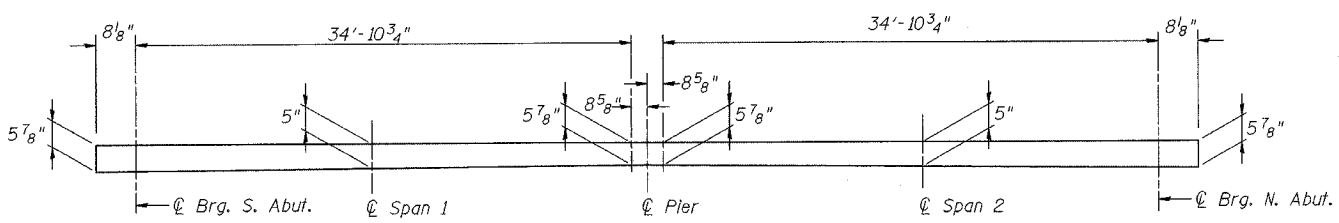
SECTION A-A THRU ABUTMENT
(Dim's at Rt. L's)



BAR a(E)



REINFORCED CONCRETE WEARING SURFACE PROFILE
(Along Q Roadway & P.G.)



REINFORCED CONCRETE WEARING SURFACE PROFILE
(Along Edge of Deck)

NOTES:

Work this sheet with Sheet 3 of 9.

See Sheet 5 of 9 for details of Rail Anchorage into precast beams and Section D-D.

Ends of beams shall be aligned at the expansion joints. Any lineal variation in the beam lengths shall be placed at the fixed joint.

After beams have been erected, temporary retainers shall be installed, holes for dowel rods shall be drilled into pier and dowel rods placed. Dowel holes shall be filled with non-shrink grout to top of beam and allowed to cure a minimum of 24 hrs prior to grouting the shear keys.

Concrete wearing surface (including blockout) to be poured after grouting the shear keys.

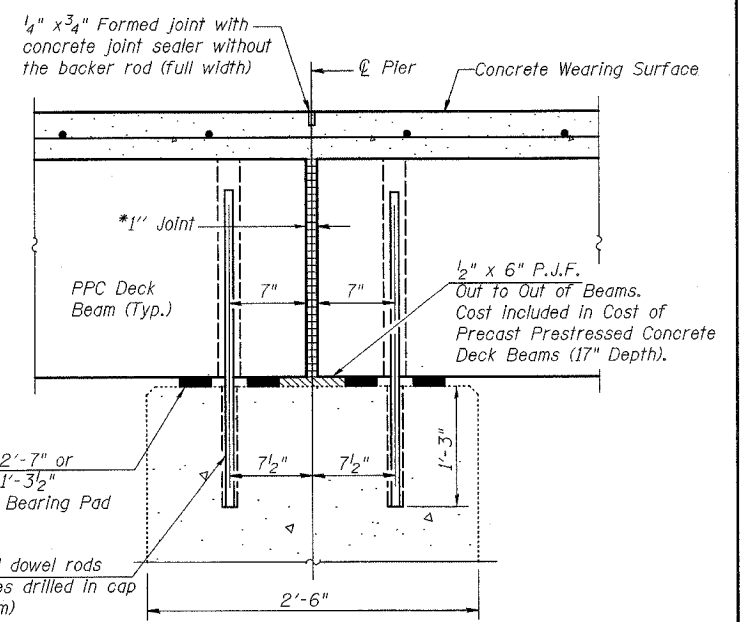
Hatched area to be poured after concrete wearing surface (including blockout) is in place. Quantity included with Concrete Structures on sheet 8 of 9.

See sheet 5 of 9 for fabric bearing pad details.

Dowel rods drilled in pier cap are included in the cost of Precast Prestressed Concrete Deck Beams (17" Depth).

Reinforcement bars designated (E) shall be epoxy coated.

Existing Vertical Reinforcement Bars in Hatch Block to remain see sheet 8 of 9.

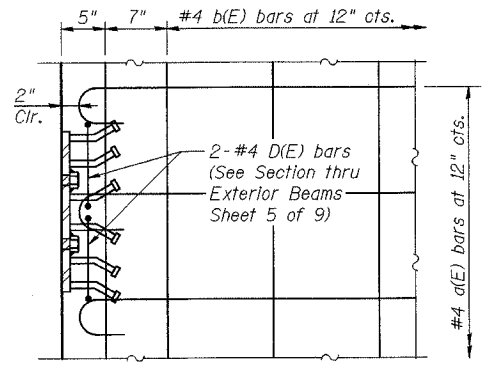


SECTION B-B THRU PIER
(Dim's at Rt L's)

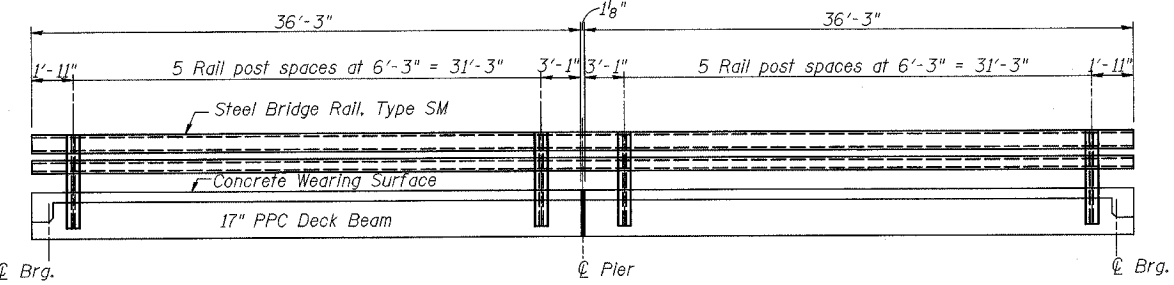
*1" Joint shall be packed with non-shrink grout. 1" dimension may vary to accommodate tolerance to beam lengths.

SUPERSTRUCTURE BILL OF MATERIAL

BAR NO.	SIZE	LENGTH	SHAPE
a(E)	#4	33'-8"	←
a ₁ (E)	#5	37'-9"	←
b(E)	#4	25'-2"	←
Reinforcement Bars, Epoxy Coated		Pound	3670
Concrete Wearing Surface		Sq. Yd.	266
Bridge Deck Grooving		Sq. Yd.	249



SECTION C-C



RAIL POST SPACING

ILLINOIS DEPARTMENT OF TRANSPORTATION

SUPERSTRUCTURE DETAILS

IL ROUTE 49 OVER A TRIBUTARY OF THE LITTLE VERMILION RIVER

F.A.P. ROUTE 836 SECTION I18BR

CHAMPAIGN COUNTY

STATION 664+76.09

STRUCTURE NO. 010-0236