

CONTRACT NO. 72449

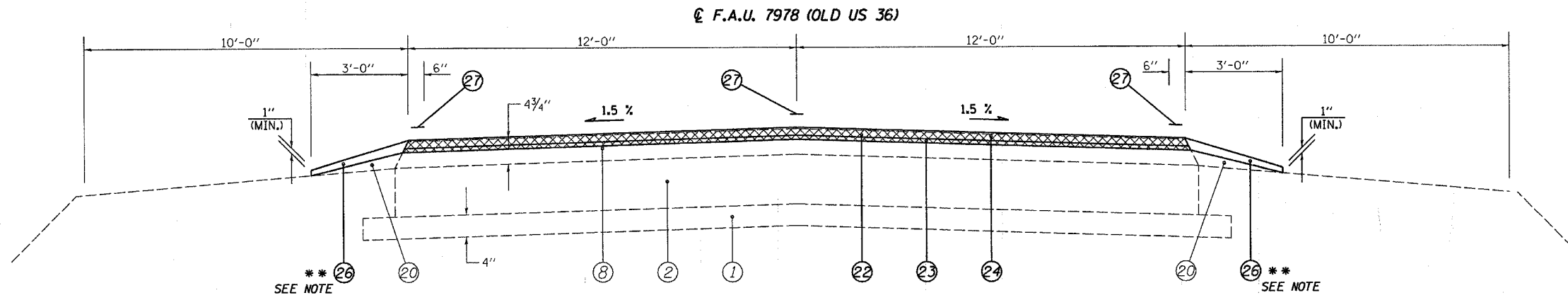
F.A.U. RTE.	SECTION	COUNTY	TOTAL SHEETS	SHEET NO.
•	••	SANGAMON	261	13
STA. 39+00.00		TO STA. 77+00.00		
FED. ROAD DIST. NO.		ILLINOIS FED. AID PROJECT		

• 7978 (OLD US 36) & 7968 (CAMP BUTLER RD.)
 •• 3RBR, BR-1, BR-2, 19RS-8

STA EQN #3
 STA 62+06.10 (BK) =
 STA 62+31.60 (AH)

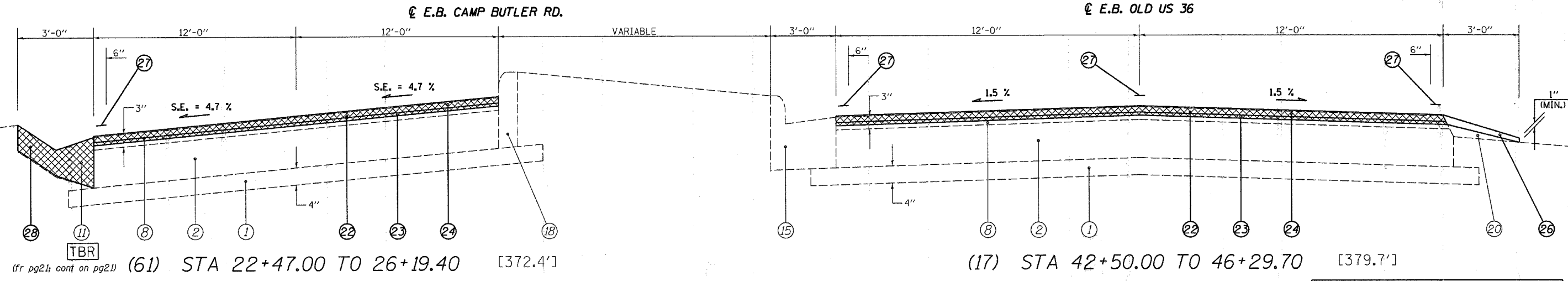
BRIDGE OMISSION
 S.N.: 084-0052
 STA 67+56.91 TO
 STA 76+94.50

STA EQN #4
 STA 66+55.00 (BK) =
 STA 66+60.23 (AH)



- (E.B. OLD US 36) (W.B. OLD US 36)
- (16) STA 39+00.00 TO 42+50.00 [350'] (25) STA 39+25.00 TO 44+77.00 [552'] (fr pg9; cont on pg9)
- (fr pg7; cont on pg8) (20) STA 52+55.00 TO 53+98.40 [143.4'] (29) STA 51+19.40 TO 56+68.30 [545.3'] (fr pg10; cont on pg8)
- (OLD US 36)
- (fr pg11) (33) STA 62+31.60 TO 66+55.00 [423.4']
- STA 66+60.23 TO 67+62.14 [101.91']
- (cont on pg11) (34) STA 75+99.73 TO 77+05.23 [105.5']

***** NOTE:**
 WIDTHS OF PROP. AGG SHOULDERS ARE 9'-0" &
 VAR. FR STA 66+00.00 TO 77+00.00 LT & RT



- (E.B. TRAFFIC)
- (61) STA 22+47.00 TO 26+19.40 [372.4'] (17) STA 42+50.00 TO 46+29.70 [379.7']

(E.B. TRAFFIC)
 FULL S.E.: (S.E.#5 = 2.4%)
 STA 44+77.60 to 51+21.10
 S.E. TRANSITION:
 STA 43+13.60 TO 44+77.60
 STA 51+21.10 TO 52+85.10

LEGEND

① EXIST. SUB-BASE GRANULAR MATERIAL	⑰ EXIST. P.C.C. CURB & GUTTER, TYPE 7
② EXIST. P.C.C. PAVEMENT 9"	⑱ EXIST. P.C.C. CURB, TYPE 4
③ EXIST. P.C.C. PAVEMENT 9"-6"-9"	⑲ EXIST. P.C.C. CURB, TYPE 10 (MODIFIED)
④ EXIST. P.C.C. PAVEMENT 10"	⑳ EXIST. AGGREGATE SHOULDERS, TYPE B
⑤ EXIST. BITUMINOUS BASE COURSE 10"	㉑ PROP. BITUMINOUS SURFACE REMOVAL (VARIABLE DEPTH) *
⑥ EXIST. P.C.C. BASE COURSE WIDENING 9"	㉒ PROP. BITUMINOUS SURFACE REMOVAL 2"
⑦ EXIST. STABILIZED BASE COURSE 10"	㉓ PROP. LEVELING BINDER (MACHINE METHOD), SUPERPAVE N70 3/4"
⑧ EXIST. BITUMINOUS OVERLAY	㉔ PROP. BITUMINOUS CONCRETE SURFACE COURSE, SUPERPAVE, MIX "D", N70 1/2"
⑨ EXIST. BITUMINOUS SHOULDERS	㉕ PROP. BITUMINOUS SHOULDERS SUPERPAVE
⑩ EXIST. PIPE UNDERDRAIN 6"	㉖ PROP. AGGREGATE SHOULDERS, TYPE B
⑪ EXIST. CONCRETE GUTTER, TYPE A (MODIFIED)	㉗ PROP. PAINT PAVEMENT MARKING - LINE 5"
⑫ EXIST. CONCRETE GUTTER, TYPE B	㉘ PROP. CONCRETE GUTTER, TYPE A (MODIFIED)
⑬ EXIST. CONCRETE GUTTER, TYPE C (MODIFIED)	㉙ PROP. BITUMINOUS SHOULDER SUPERPAVE 8"
⑭ EXIST. P.C.C. CURB & GUTTER, TYPE 10 (MODIFIED)	㉚ PROP. GRADING AND SHAPING SHOULDERS
⑮ EXIST. P.C.C. CURB & GUTTER, TYPE 6	
⑯ EXIST. P.C.C. CURB & GUTTER, TYPE 6 (MODIFIED)	

* NOMINAL MILLING DEPTH 1/2"

NOT TO SCALE

REVISIONS		ILLINOIS DEPARTMENT OF TRANSPORTATION
NAME	DATE	
		TYPICAL SECTIONS F.A.U. Route 7978 (OLD US 36) & F.A.U. Route 7968 (CAMP BUTLER RD.) Section 3R(BR, BR-1, BR-2), 19RS-8 SANGAMON COUNTY SCALE: VERT. DRAWN BY: JWC HORIZ. CHECKED BY: RSC DATE: JULY 20, 2005

(E.B. CAMP BUTLER RD. / W.B. & E.B. OLD US 36)

• DGN-SPEC •
 • DATE-TIME •
 • REF:01