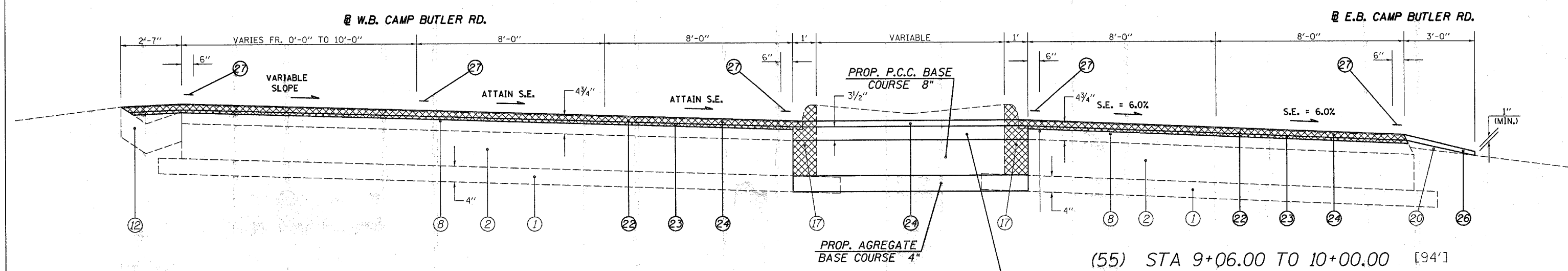
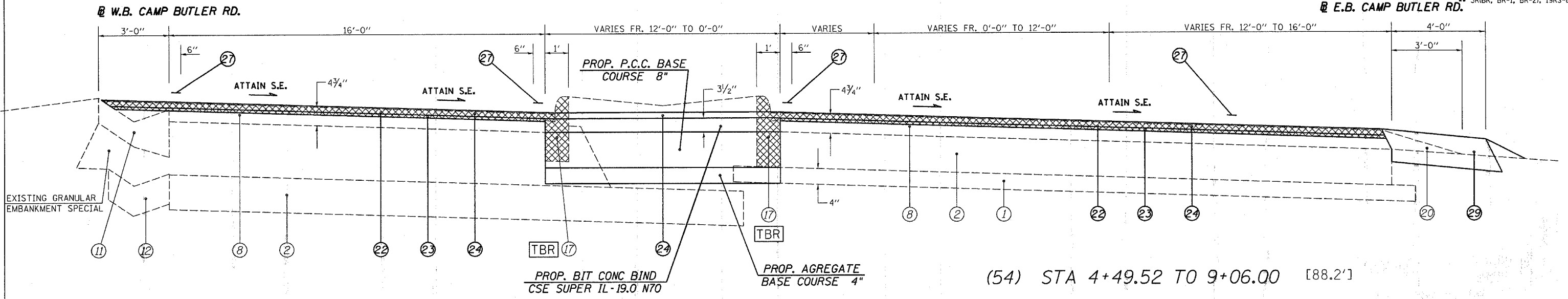


CONTRACT NO. 72449

F.A.U. RTE.	SECTION	COUNTY	TOTAL SHEETS	SHEET NO.
**	**	SANGAMON	261	27

STA. 8+00.00 TO STA. 10+00.00
 FED. ROAD DIST. NO. ILLINOIS FED. AID PROJECT

* 7978 (OLD US 36) & 7968 (CAMP BUTLER RD.)
 ** 3R(BR, BR-1, BR-2), 19RS-8



LEGEND	
①	EXIST. SUB-BASE GRANULAR MATERIAL
②	EXIST. P.C.C. PAVEMENT 9"
③	EXIST. P.C.C. PAVEMENT 9"-6"-9"
④	EXIST. P.C.C. PAVEMENT 10"
⑤	EXIST. BITUMINOUS BASE COURSE 10"
⑥	EXIST. P.C.C. BASE COURSE WIDENING 9"
⑦	EXIST. STABILIZED BASE COURSE 10"
⑧	EXIST. BITUMINOUS OVERLAY
⑨	EXIST. BITUMINOUS SHOULDERS
⑩	EXIST. PIPE UNDERDRAIN 6"
⑪	EXIST. CONCRETE GUTTER, TYPE A (MODIFIED)
⑫	EXIST. CONCRETE GUTTER, TYPE B
⑬	EXIST. CONCRETE GUTTER, TYPE C (MODIFIED)
⑭	EXIST. P.C.C. CURB & GUTTER, TYPE 10 (MODIFIED)
⑮	EXIST. P.C.C. CURB & GUTTER, TYPE 6
⑯	EXIST. P.C.C. CURB & GUTTER, TYPE 6 (MODIFIED)
⑰	EXIST. P.C.C. CURB & GUTTER, TYPE 7
⑱	EXIST. P.C.C. CURB, TYPE 4
⑲	EXIST. P.C.C. CURB, TYPE 10 (MODIFIED)
⑳	EXIST. AGGREGATE SHOULDERS, TYPE B
㉑	PROP. BITUMINOUS SURFACE REMOVAL (VARIABLE DEPTH) *
㉒	PROP. BITUMINOUS SURFACE REMOVAL 2"
㉓	PROP. LEVELING BINDER (MACHINE METHOD), SUPERPAVE N70 3/4"
㉔	PROP. BITUMINOUS CONCRETE SURFACE COURSE, SUPERPAVE, MIX "D", N70 1 1/2"
㉕	PROP. BITUMINOUS SHOULDERS SUPERPAVE
㉖	PROP. AGGREGATE SHOULDERS, TYPE B
㉗	PROP. PAINT PAVEMENT MARKING - LINE 5"
㉘	PROP. CONCRETE GUTTER, TYPE A (MODIFIED)
㉙	PROP. BITUMINOUS SHOULDER SUPERPAVE 8"
㉚	PROP. GRADING AND SHAPING SHOULDERS

* NOMINAL MILLING DEPTH 1/2"

NOT TO SCALE

REVISIONS	
NAME	DATE

ILLINOIS DEPARTMENT OF TRANSPORTATION
TYPICAL SECTIONS
 F.A.U. Route 7978 (OLD US 36) &
 F.A.U. Route 7968 (CAMP BUTLER RD.)
 Section 3R(BR, BR-1, BR-2), 19RS-8
 SANGAMON COUNTY
 VERT. SCALE: HORIZ. SCALE: HORIZ.
 DATE: JULY 20, 2005
 DRAWN BY: JWC
 CHECKED BY: RSC

DGN-SPEC
DATE-TIME
REF:01