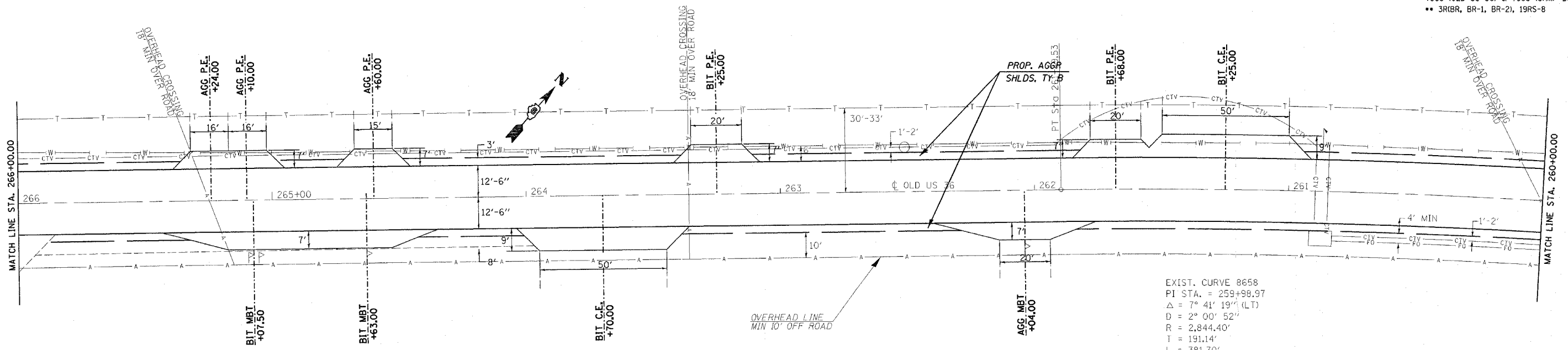


CONTRACT NO. 72449

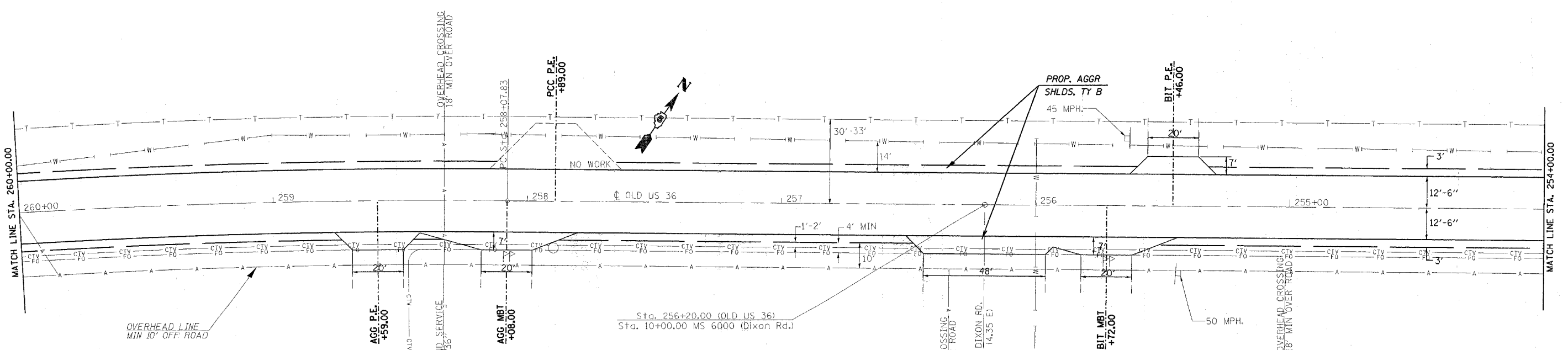
F.A.U. RTE.	SECTION	COUNTY	TOTAL SHEETS	SHEET NO.
*	**	SANGAMON	261	59
STA. 266+00.00		TO STA. 254+00.00		
FED. ROAD DIST. NO.		ILLINOIS FED. AID PROJECT		
* 7968 (OLD US 36) & 7968 (CAMP BUTLER RD.)				
** 3R(BR, BR-1, BR-2), 19RS-8				

(#8)



EXIST. CURVE 8658
 PI STA. = 259+98.97
 $\Delta = 7^\circ 41' 19''$ (LT)
 $D = 2^\circ 00' 52''$
 $R = 2,844.40'$
 $T = 191.14'$
 $L = 381.70'$
 $E = 6.41'$
 $e = \dots$
 $T.R. = \dots$
 $S.E. RUN = \dots$
 $P.C. STA. = 258+07.83$
 $P.T. STA. = 261+89.53$

(#8)



REVISIONS	
NAME	DATE

ILLINOIS DEPARTMENT OF TRANSPORTATION
PLAN VIEW
 F.A.U. Route 7978 (OLD US 36) &
 F.A.U. Route 7968 (CAMP BUTLER RD.)
 Section 3R(BR, BR-1, BR-2), 19RS-8
 SANGAMON COUNTY
 SCALE: VERT. _____
 HORIZ. _____
 DATE: AUGUST 9, 2005
 DRAWN BY: JWC
 CHECKED BY: RSC

PLOT DATE = 11/2/2005
 FILE NAME = c:\projects\72449\shp1018.dgn
 PLOT SCALE = 20,000.00 / IN.
 USER NAME = cckj

shp1018.dgn
 Chant E101

(OLD US 36)