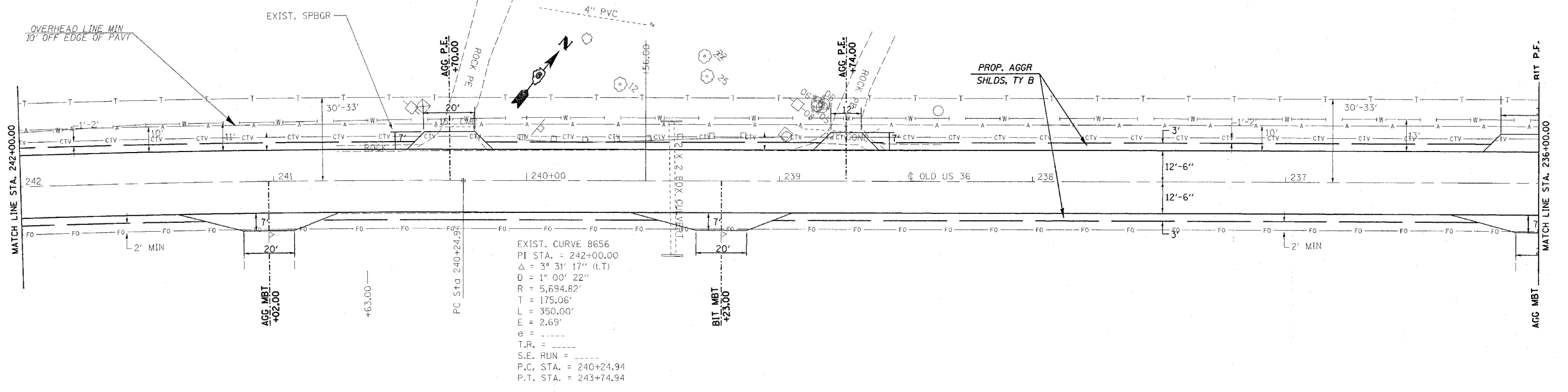


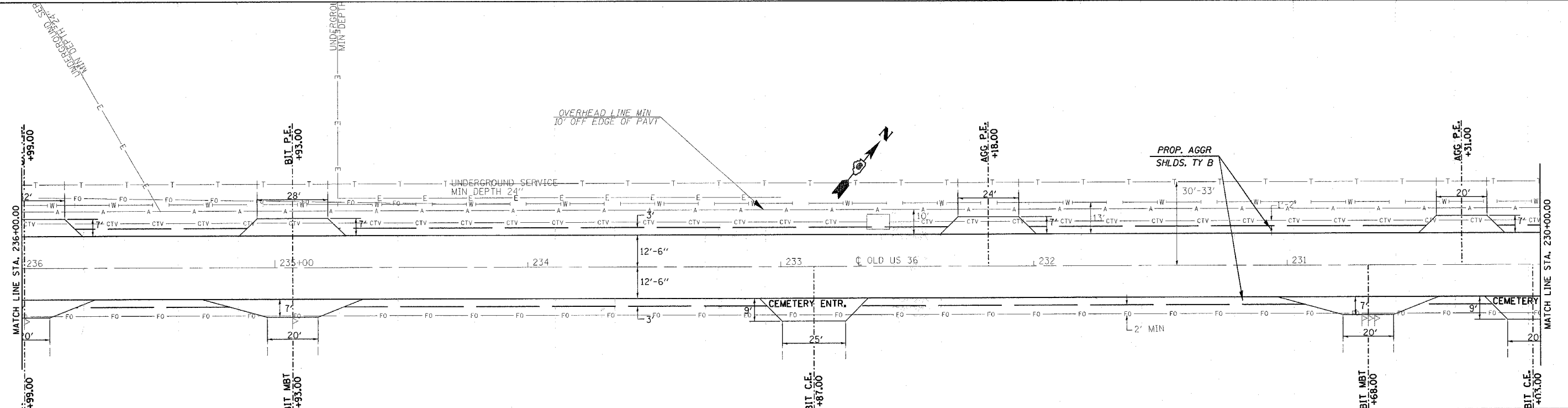
CONTRACT NO. 72449

F.A.U. RTE.	SECTION	COUNTY	TOTAL SHEETS	SHEET NO.
•	••	SANGAMON	261	61
STA. 242+00.00 TO STA. 230+00.00				
FED. ROAD DIST. NO. ILLINOIS FED. AID PROJECT				
• 7978 (OLD US 36) & 7968 (CAMP BUTLER RD.)				
•• 3R(BR, BR-1, BR-2), 19RS-8				

(#8)



EXIST. CURVE 8656
 PI STA. = 242+00.00
 $\Delta = 3^\circ 31' 17''$ (LT)
 $D = 1^\circ 00' 22''$
 $R = 5,694.82'$
 $T = 175.06'$
 $L = 350.00'$
 $E = 2.69'$
 $\theta =$
 $T.R. =$
 $S.E. RUN =$
 $P.C. STA. = 240+24.94$
 $P.T. STA. = 243+74.94$



(#8)

REVISIONS	
NAME	DATE

ILLINOIS DEPARTMENT OF TRANSPORTATION
PLAN VIEW
 F.A.U. Route 7978 (OLD US 36) &
 F.A.U. Route 7968 (CAMP BUTLER RD.)
 Section 3R(BR, BR-1, BR-2), 19RS-8
 SANGAMON COUNTY
 SCALE: VERT. DRAWN BY: JWC
 HORIZ. CHECKED BY: RSC
 DATE: AUGUST 9, 2005

PLOT DATE = 11/2/2005
 FILE NAME = c:\prow\genas\ad525282\shp1one10010.dgn
 USER NAME = cawg

shp1one10010.dgn
 Charu E101

(OLD US 36)