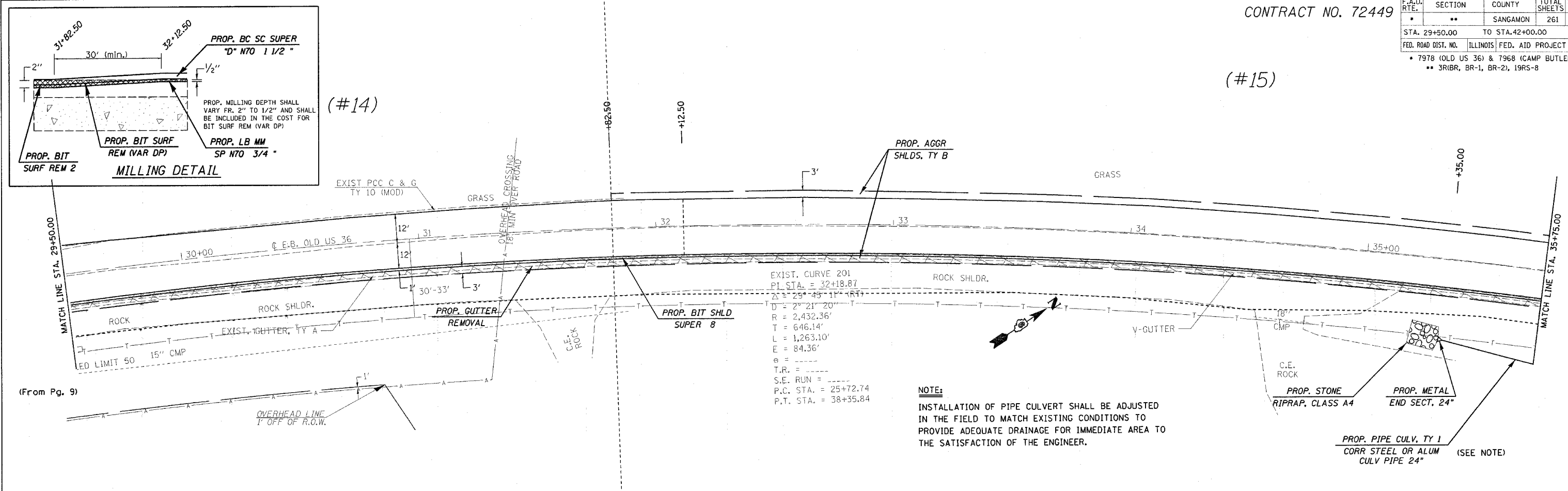


CONTRACT NO. 72449

F.A.U. RTE.	SECTION	COUNTY	TOTAL SHEETS	SHEET NO.
..	..	SANGAMON	261	66
STA. 29+50.00		TO STA. 42+00.00		
FED. ROAD DIST. NO.		ILLINOIS FED. AID PROJECT		
* 7978 (OLD US 36) & 7968 (CAMP BUTLER RD)				
** 3R1BR, BR-1, BR-2, 19RS-8				

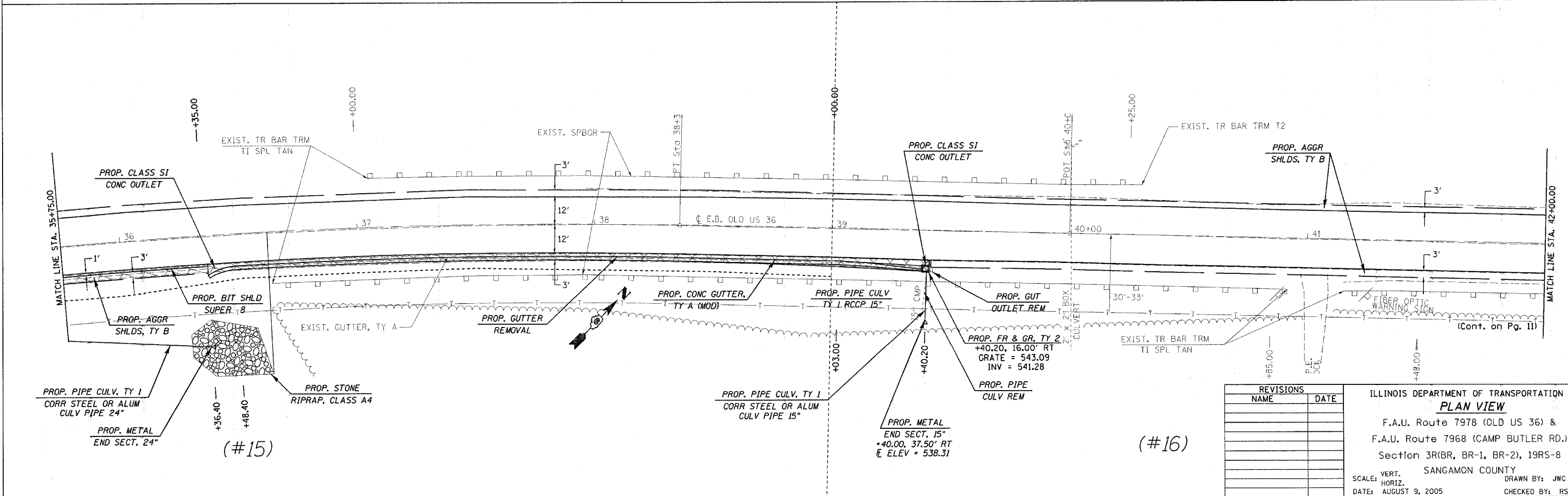
(#15)



EXIST. CURVE 201
 PI STA. = 32+18.87
 $\Delta = 29^{\circ} 45' 11''$
 $D = 2^{\circ} 21' 20''$
 $R = 2,432.36'$
 $T = 646.14'$
 $L = 1,263.10'$
 $E = 84.36'$
 $\theta =$
 $T.R. =$
 $S.E. RUN =$
 $P.C. STA. = 25+72.74$
 $P.T. STA. = 38+35.84$

NOTE:
 INSTALLATION OF PIPE CULVERT SHALL BE ADJUSTED IN THE FIELD TO MATCH EXISTING CONDITIONS TO PROVIDE ADEQUATE DRAINAGE FOR IMMEDIATE AREA TO THE SATISFACTION OF THE ENGINEER.

PROP. PIPE CULV. TY 1
 CORR STEEL OR ALUM
 CULV PIPE 24" (SEE NOTE)



(#16)

REVISIONS	
NAME	DATE

ILLINOIS DEPARTMENT OF TRANSPORTATION
PLAN VIEW
 F.A.U. Route 7978 (OLD US 36) &
 F.A.U. Route 7968 (CAMP BUTLER RD.)
 Section 3R1BR, BR-1, BR-2, 19RS-8
 SANGAMON COUNTY
 VERT. SCALE: HORIZ.
 DATE: AUGUST 9, 2005
 DRAWN BY: JWC
 CHECKED BY: RSC

(E.B. OLD US 36)

PLOT DATE = 11/2/2005
 FILE NAME = c:\p\proj\72449\72449.dwg
 PLOT SCALE = 20,000% / IN.
 USER NAME = cox,j

shp1ene00111.dgn
 Chain: E001