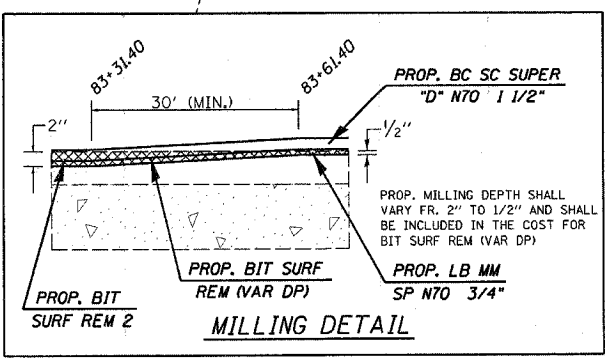
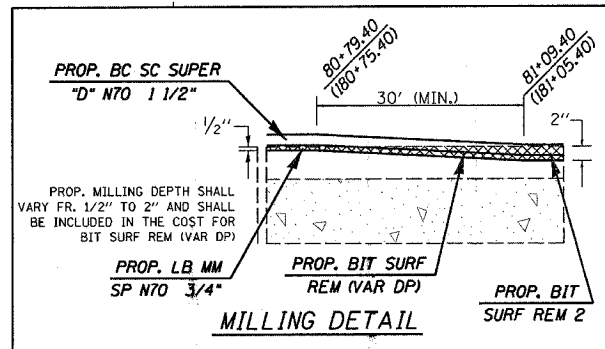
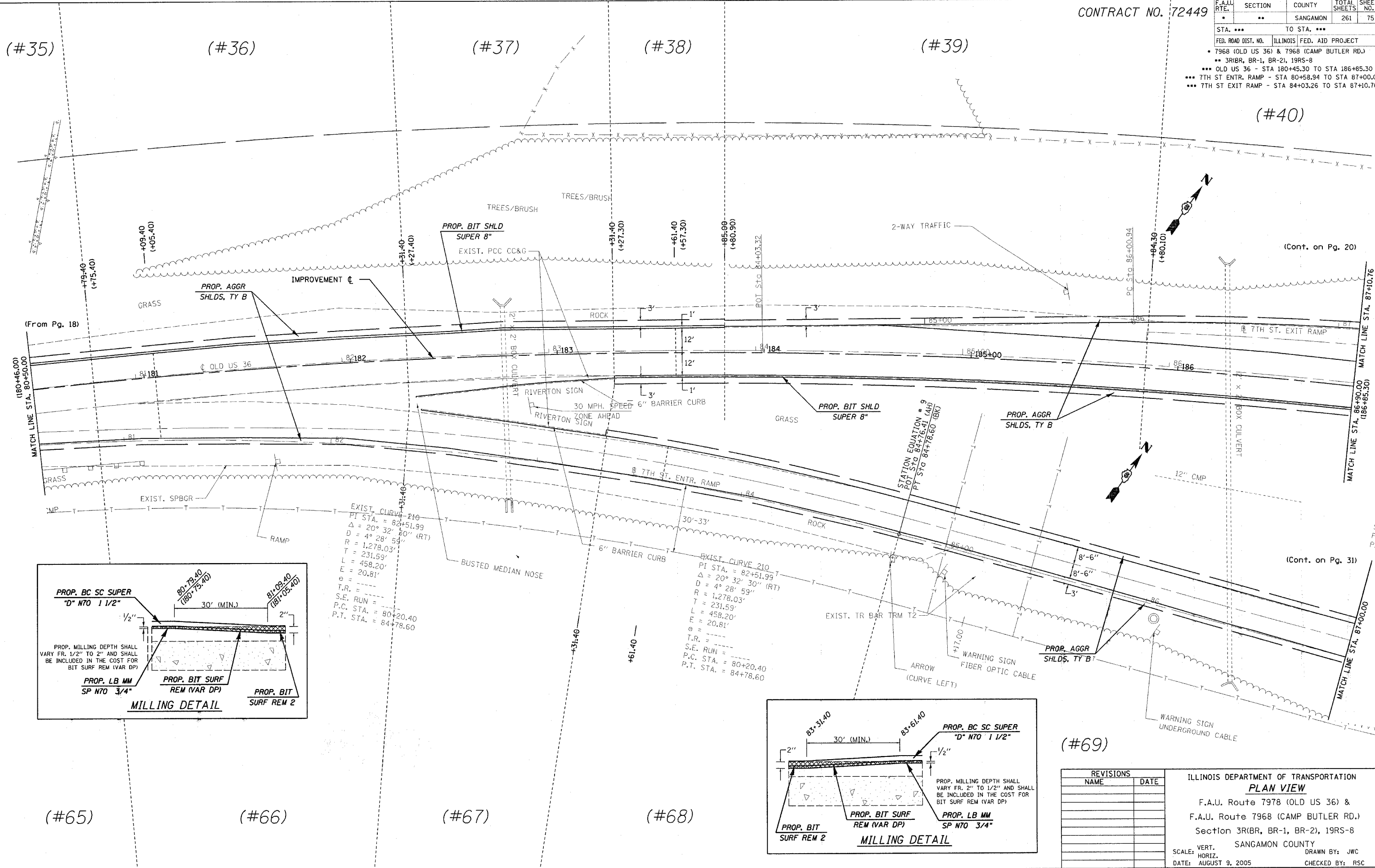


CONTRACT NO. 72449

F.A.U. RTE.	SECTION	COUNTY	TOTAL SHEETS	SHEET NO.
*	**	SANGAMON	261	75
STA. ***		TO STA. ***		
FED. ROAD DIST. NO. ILLINOIS FED. AID PROJECT				
* 7968 (OLD US 36) & 7968 (CAMP BUTLER RD.)				
** 3R1BR, BR-1, BR-2, 19RS-8				
*** OLD US 36 - STA 180+45.30 TO STA 186+85.30				
*** 7TH ST ENTR. RAMP - STA 80+58.94 TO STA 87+00.00				
*** 7TH ST EXIT RAMP - STA 84+03.26 TO STA 87+10.76				



PLOT DATE = 11/2/2005
 FILE NAME = c:\projects\72449\shp\plan\082303.dgn
 PLOT SCALE = 20,000.00 / 1 IN.
 USER NAME = cooju

REVISIONS	
NAME	DATE

ILLINOIS DEPARTMENT OF TRANSPORTATION
PLAN VIEW
 F.A.U. Route 7978 (OLD US 36) &
 F.A.U. Route 7968 (CAMP BUTLER RD.)
 Section 3R1BR, BR-1, BR-2, 19RS-8
 SANGAMON COUNTY
 VERT. SCALE: DRAWN BY: JWC
 HORIZ. SCALE: CHECKED BY: RSC
 DATE: AUGUST 9, 2005