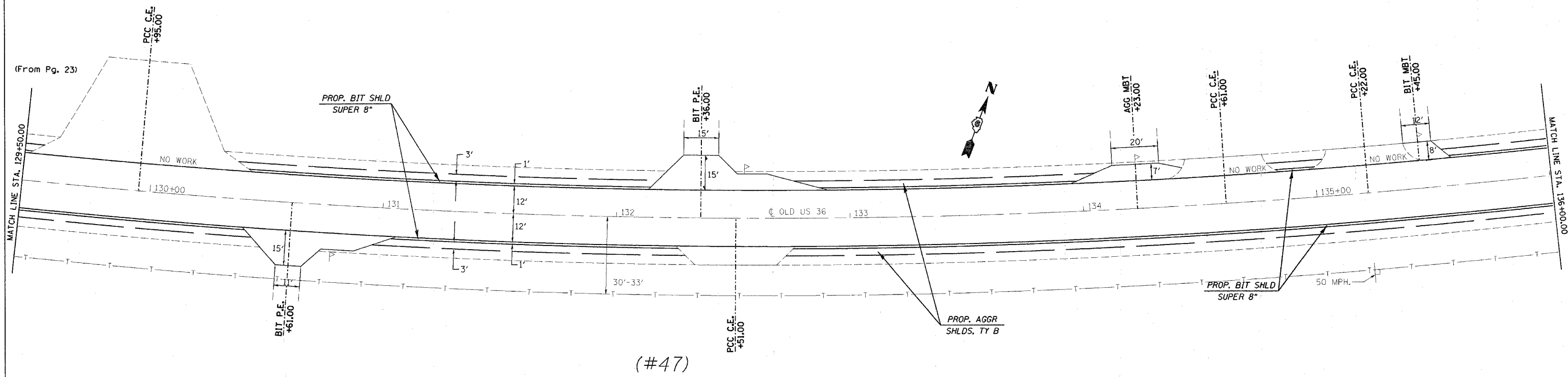
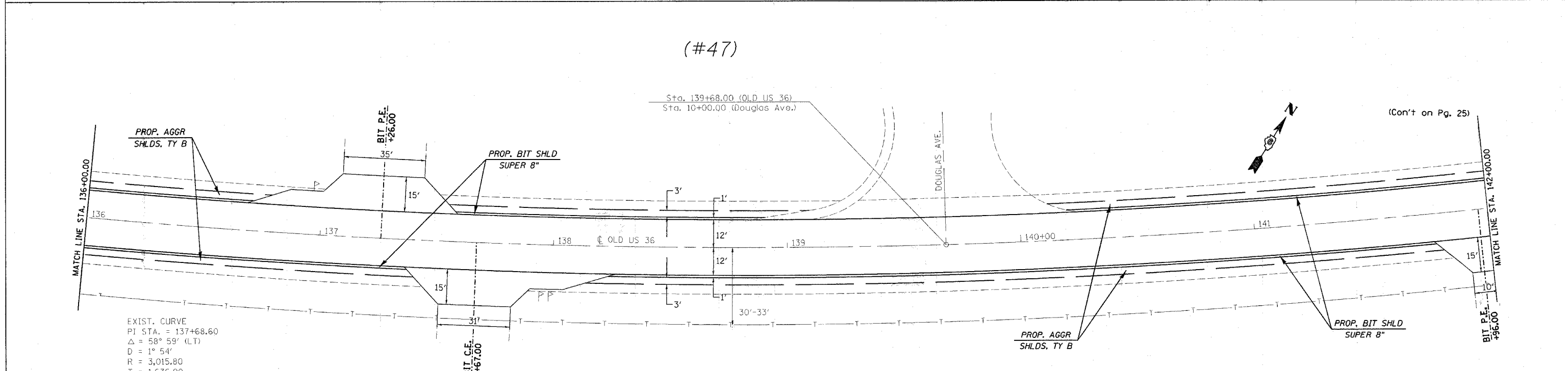


CONTRACT NO. 72449

F.A.U. RTE.	SECTION	COUNTY	TOTAL SHEETS	SHEET NO.
•	••	SANGAMON	261	80
STA. 124+00.00 TO STA. 142+00.00				
FED. ROAD DIST. NO. ILLINOIS FED. AID PROJECT				
• 7978 (OLD US 36) & 7968 (CAMP BUTLER RD.)				
•• 3R(BR, BR-1, BR-2), 19RS-8				



(#47)



(#47)

EXIST. CURVE  
 PI STA. = 137+68.60  
 $\Delta = 58^\circ 59'$  (LT)  
 $D = 1^\circ 54'$   
 $R = 3,015.80$   
 $T = 1,636.90$   
 $L = 2,999.10$   
 P.C. STA. = 121+31.70  
 P.T. STA. = 151+30.80  
 $S.E. = .028$  FT/FT  
 $S.E$  ATTAIN. = 120+41.80 TO 122+21.60  
 $S.E$  ATTAIN. = 150+40.90 TO 152+20.70

REVISIONS	
NAME	DATE

ILLINOIS DEPARTMENT OF TRANSPORTATION  
**PLAN VIEW**  
 F.A.U. Route 7978 (OLD US 36) &  
 F.A.U. Route 7968 (CAMP BUTLER RD.)  
 Section 3R(BR, BR-1, BR-2), 19RS-8  
 SANGAMON COUNTY  
 SCALE: VERT.      DRAWN BY: JWC  
 HORIZ.              CHECKED BY: RSC  
 DATE: AUGUST 9, 2005

PLOT DATE = 11/2/2005  
 FILE NAME = c:\work\proj\72449\shp\plane02535.dgn  
 USER NAME = crosby

shp\plane02535.dgn  
 Chain: E005

(OLD US 36)