

F.A.U. RTE.	SECTION	COUNTY	TOTAL SHEETS	SHEET NO.
		SANGAMON	261	113

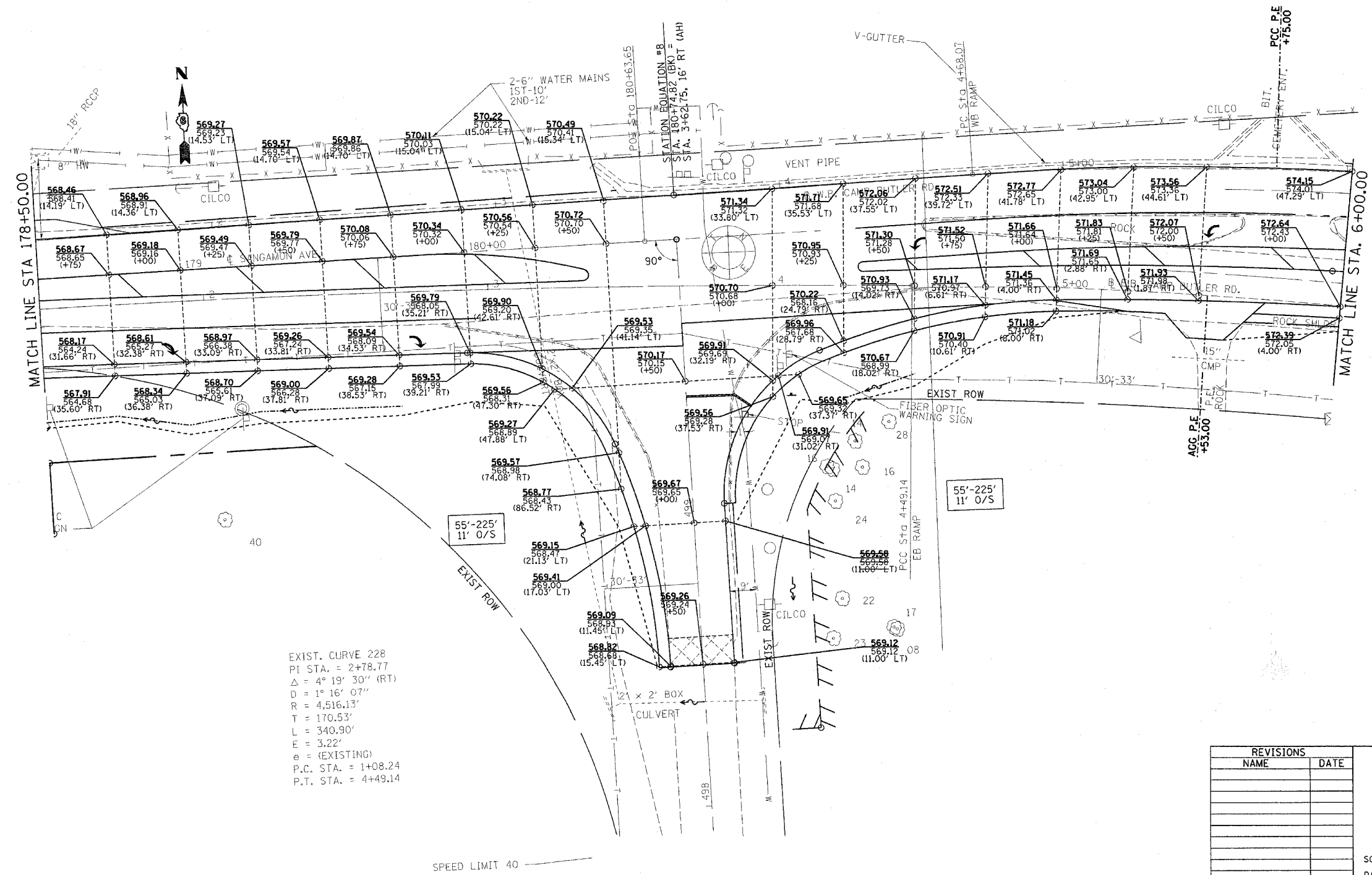
STA. 178+50.00 TO STA. 6+00.00
 FED. ROAD DIST. NO. ILLINOIS FED. AID PROJECT
 *7978 (US 36) & 7968 (CAMP BUTLER RD)
 **3R(BR, BR-1, BR-2), 19RS-8

EXIST. CURVE 228
 PI STA. = 2+78.77
 $\Delta = 4^{\circ} 19' 30''$ (RT)
 $D = 1^{\circ} 16' 07''$
 $R = 4,516.13'$
 $T = 170.53'$
 $L = 340.90'$
 $E = 3.22'$
 $e =$
 $T.R. =$
 $S.E. RUN =$
 $P.C. STA. = 1+08.24$
 $P.T. STA. = 4+49.14$

EXIST. CURVE 228
 PI STA. = 2+78.77
 $\Delta = 4^{\circ} 19' 30''$ (RT)
 $D = 1^{\circ} 16' 07''$
 $R = 4,516.13'$
 $T = 170.53'$
 $L = 340.90'$
 $E = 3.22'$
 $e =$
 $T.R. =$
 $S.E. RUN =$
 $P.C. STA. = 1+08.24$
 $P.T. STA. = 4+49.14$

EXIST. CURVE 221
 PI STA. = 6+14.29
 $\Delta = 15^{\circ} 11' 35''$ (RT)
 $D = 5^{\circ} 13' 34''$
 $R = 1,096.33'$
 $T = 146.21'$
 $L = 290.71'$
 $E = 9.71'$
 $e =$
 $T.R. =$
 $S.E. RUN =$
 $P.C. STA. = 4+68.07$
 $P.T. STA. = 7+58.79$

EXIST. CURVE 221
 PI STA. = 6+14.29
 $\Delta = 15^{\circ} 11' 35''$ (RT)
 $D = 5^{\circ} 13' 34''$
 $R = 1,096.33'$
 $T = 146.21'$
 $L = 290.71'$
 $E = 9.71'$
 $e =$
 $T.R. =$
 $S.E. RUN =$
 $P.C. STA. = 4+68.07$
 $P.T. STA. = 7+58.79$



EXIST. CURVE 228
 PI STA. = 2+78.77
 $\Delta = 4^{\circ} 19' 30''$ (RT)
 $D = 1^{\circ} 16' 07''$
 $R = 4,516.13'$
 $T = 170.53'$
 $L = 340.90'$
 $E = 3.22'$
 $e =$ (EXISTING)
 $P.C. STA. = 1+08.24$
 $P.T. STA. = 4+49.14$

REVISIONS	
NAME	DATE

ILLINOIS DEPARTMENT OF TRANSPORTATION
PAVEMENT ELEVATIONS
 F.A.U. Route 7978 (US 36) &
 F.A.U. Route 7968 (CAMP BUTLER RD)
 Section: 3R(BR, BR-1, BR-2), 19RS-8
 SANGAMON COUNTY
 SCALE: VERT. _____
 HORIZ. _____
 DATE: MAY 26, 2005
 DRAWN BY: JWC
 CHECKED BY: RSC

PLOT DATE = 11/3/2005
 FILE NAME = c:\projects\d652102\shp\pavementelevation5.dgn
 PLOT SCALE = 20.0000 / IN.
 USER NAME = cbrrears