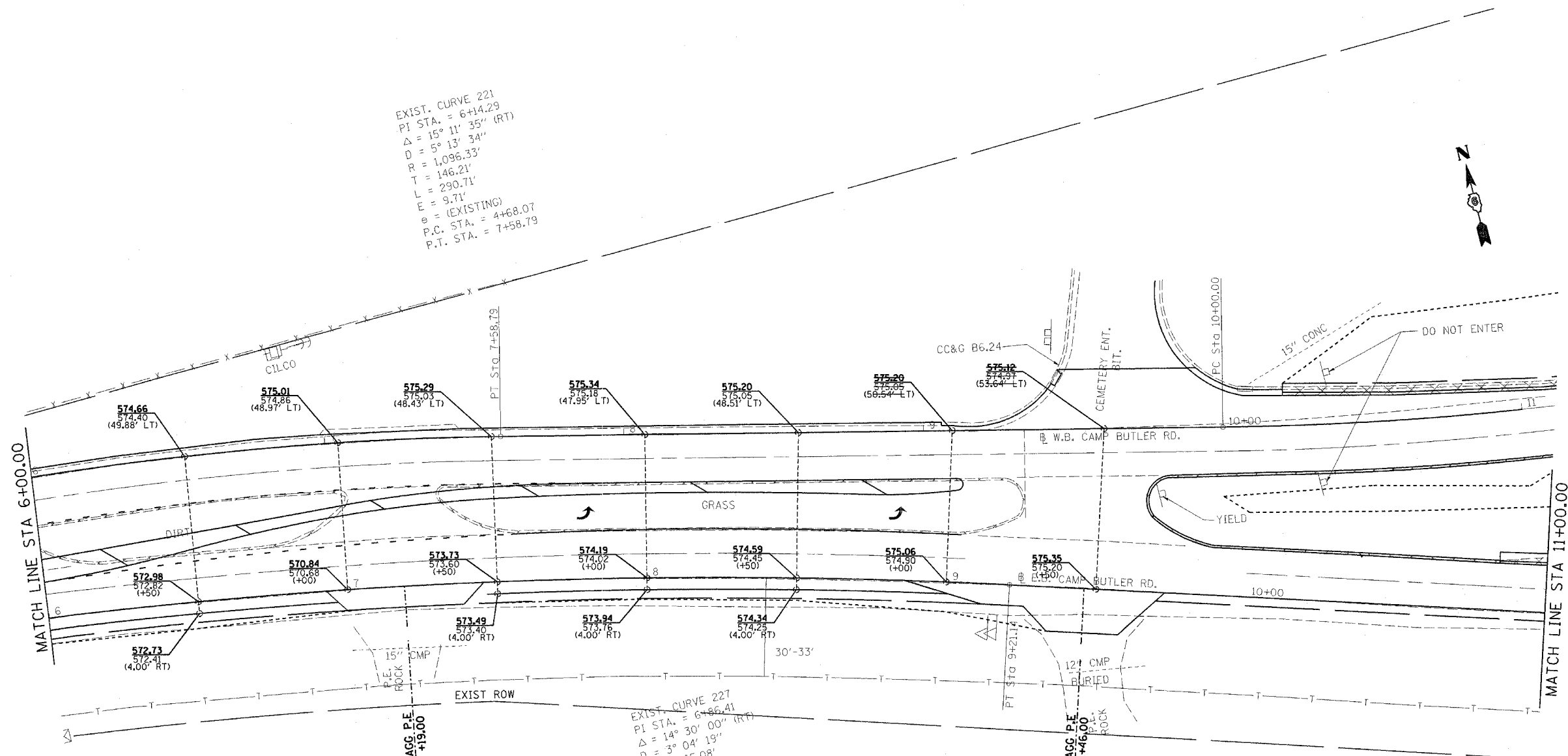


F.A.U. RTE.	SECTION	COUNTY	TOTAL SHEETS	SHEET NO.
*	**	SANGAMON	261	114
STA. 6+00.00		TO STA. 11+00.00		
FED. ROAD DIST. NO.		ILLINOIS	FED. AID PROJECT	
		*7978 (US 36) & 7968 (CAMP BUTLER RD)		
		**3R(BR, BR-1, BR-2), 19RS-8		

EXIST. CURVE 221  
 PI STA. = 6+14.29  
 $\Delta = 15^\circ 11' 35''$  (RT)  
 $D = 5^\circ 13' 34''$   
 $R = 1,096.33'$   
 $T = 146.21'$   
 $L = 290.71'$   
 $E = 9.71'$   
 $e =$  (EXISTING)  
 P.C. STA. = 4+68.07  
 P.T. STA. = 7+58.79

EXIST. CURVE 227  
 PI STA. = 6+86.41  
 $\Delta = 14^\circ 30' 00''$  (RT)  
 $D = 3^\circ 04' 19''$   
 $R = 1,865.08'$   
 $T = 237.27'$   
 $L = 472.00'$   
 $E = 15.03'$   
 $e =$  (EXISTING)  
 P.C. STA. = 4+49.14  
 P.T. STA. = 9+21.14



PLOT DATE = 11/13/2005  
 FILE NAME = c:\projects\652102\shp\pavementelevations.dgn  
 PLOT SCALE = 20.0000' / IN.  
 USER NAME = ccbrears

REVISIONS	
NAME	DATE

ILLINOIS DEPARTMENT OF TRANSPORTATION  
**PAVEMENT ELEVATIONS**  
 F.A.U. Route 7978 (US 36) &  
 F.A.U. Route 7968 (CAMP BUTLER RD)  
 Section: 3R(BR, BR-1, BR-2), 19RS-8  
 SANGAMON COUNTY  
 SCALE: VERT.                      DRAWN BY: JWC  
           HORIZ.                    CHECKED BY: RSC  
 DATE: MAY 26, 2005

**(E.B. & W.B. CAMP BUTLER RD)**