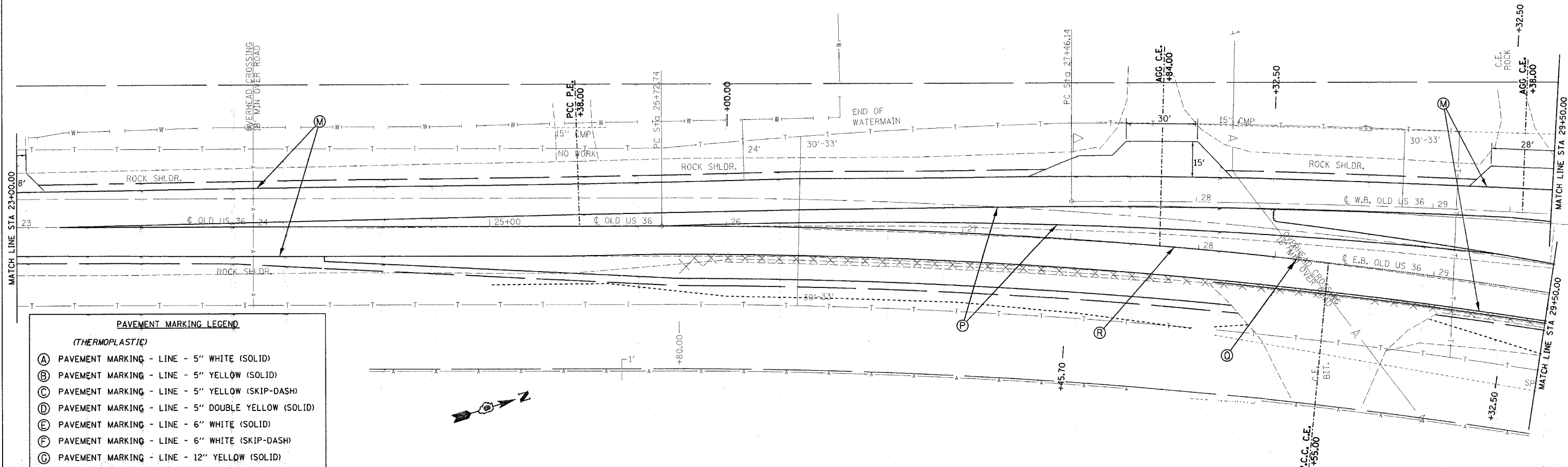


F.A.U. RTE.	SECTION	COUNTY	TOTAL SHEETS	SHEET NO.
*	**	SANGAMON	261	115
STA. 16+75.00		TO STA. 29+50.00		
FED. ROAD DIST. NO.		ILLINOIS FED. AID PROJECT		
• 7978 (OLD US 36) & 7968 (CAMP BUTLER RD.) ** 3R1BR, BR-1, BR-2, 19RS-8				



PAVEMENT MARKING LEGEND

(THERMOPLASTIC)

- (A) PAVEMENT MARKING - LINE - 5" WHITE (SOLID)
- (B) PAVEMENT MARKING - LINE - 5" YELLOW (SOLID)
- (C) PAVEMENT MARKING - LINE - 5" YELLOW (SKIP-DASH)
- (D) PAVEMENT MARKING - LINE - 5" DOUBLE YELLOW (SOLID)
- (E) PAVEMENT MARKING - LINE - 6" WHITE (SOLID)
- (F) PAVEMENT MARKING - LINE - 6" WHITE (SKIP-DASH)
- (G) PAVEMENT MARKING - LINE - 12" YELLOW (SOLID)

(PREFORMED PLASTIC, TYPE B)

- (H) PAVEMENT MARKING - LINE - 5" WHITE (SKIP - DASH)
- (I) PAVEMENT MARKING - LINE - 6" WHITE (SOLID)
- (J) PAVEMENT MARKING - LINE - 6" WHITE (SKIP - DASH)
- (K) PAVEMENT MARKING - LINE - 24" WHITE (SOLID)
- (L) PAVEMENT MARKING - LETTERS & SYMBOLS WHITE (SOLID)

(PAINT)

- (M) PAVEMENT MARKING - LINE - 5" WHITE (SOLID)
- (N) PAVEMENT MARKING - LINE - 8" WHITE (SOLID)
- (O) PAVEMENT MARKING - LINE - 5" WHITE (SKIP - DASH)
- (P) PAVEMENT MARKING - LINE - 5" YELLOW (SOLID)
- (Q) PAVEMENT MARKING - LINE - 5" YELLOW (SKIP - DASH)
- (R) PAVEMENT MARKING - LINE - 5" DOUBLE YELLOW (SOLID)

REVISIONS	
NAME	DATE

ILLINOIS DEPARTMENT OF TRANSPORTATION
PAVEMENT MARKING DETAILS
 F.A.U. Route 7978 (OLD US 36) &
 F.A.U. Route 7968 (CAMP BUTLER RD.)
 Section: 3R1BR, BR-1, BR-2, 19RS-8
 SANGAMON COUNTY
 SCALE: VERT. DRAWN BY: JWC
 HORIZ. CHECKED BY: RSC
 DATE: JULY 20, 2005

PLOT DATE = 11/22/2005
 FILE NAME = c:\pavement\proj\72449\shp\pavementmarkings0111.dgn
 PLOT SCALE = 20,00000' / 1" IN.
 USER NAME = coo.jw