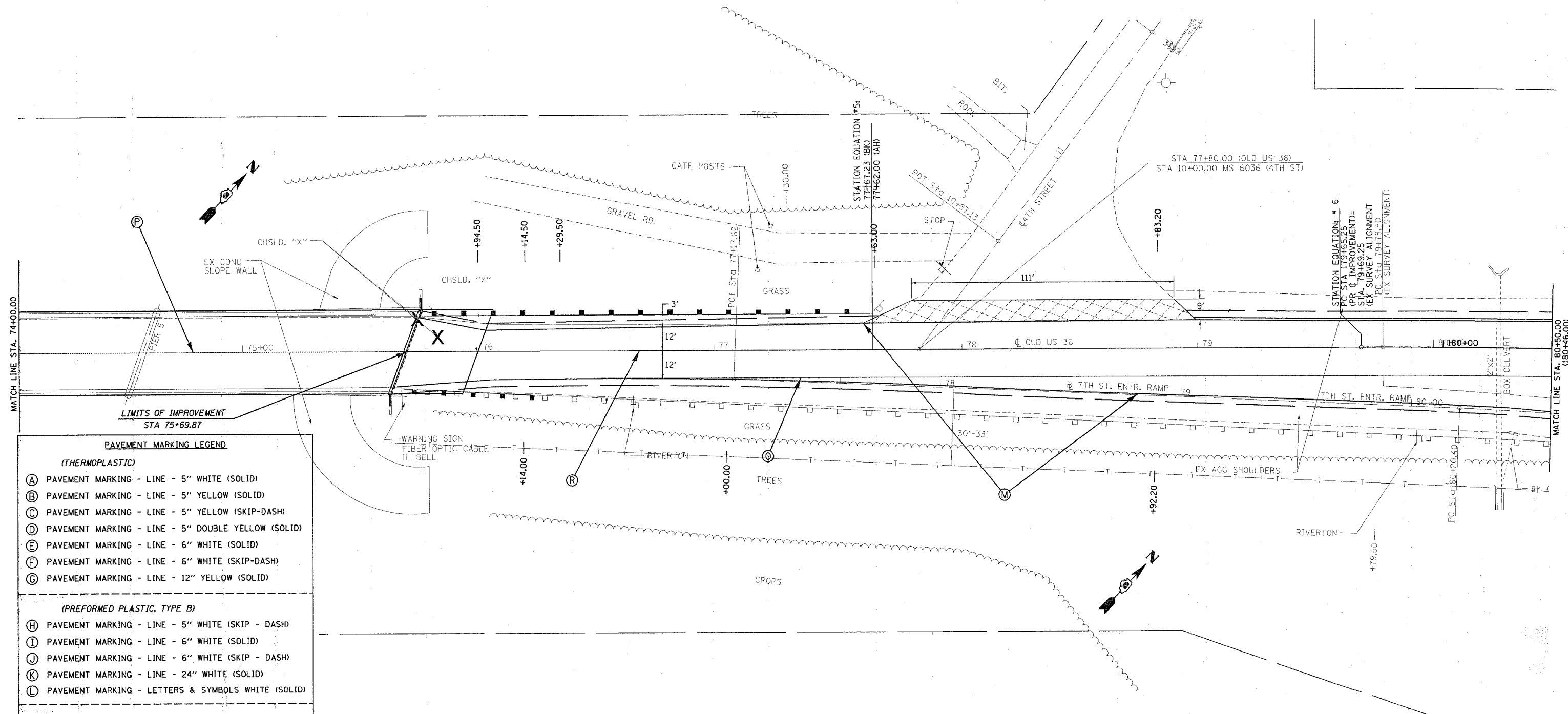


F.A.U. RTE.	SECTION	COUNTY	TOTAL SHEETS	SHEET NO.
•	••	SANGAMON	261	119
STA. 74+00.00		TO STA. 180+45.30		
FED. ROAD DIST. NO.		ILLINOIS FED. AID PROJECT		
• 7978 (US 36) & 7968 (CAMP BUTLER RD.)		•• 3R(BR, BR-1, BR-2), 19RS-8		



LIMITS OF IMPROVEMENT  
STA 75+69.87

**PAVEMENT MARKING LEGEND**

(THERMOPLASTIC)

- (A) PAVEMENT MARKING - LINE - 5" WHITE (SOLID)
- (B) PAVEMENT MARKING - LINE - 5" YELLOW (SOLID)
- (C) PAVEMENT MARKING - LINE - 5" YELLOW (SKIP-DASH)
- (D) PAVEMENT MARKING - LINE - 5" DOUBLE YELLOW (SOLID)
- (E) PAVEMENT MARKING - LINE - 6" WHITE (SOLID)
- (F) PAVEMENT MARKING - LINE - 6" WHITE (SKIP-DASH)
- (G) PAVEMENT MARKING - LINE - 12" YELLOW (SOLID)

(PREFORMED PLASTIC, TYPE B)

- (H) PAVEMENT MARKING - LINE - 5" WHITE (SKIP - DASH)
- (I) PAVEMENT MARKING - LINE - 6" WHITE (SOLID)
- (J) PAVEMENT MARKING - LINE - 6" WHITE (SKIP - DASH)
- (K) PAVEMENT MARKING - LINE - 24" WHITE (SOLID)
- (L) PAVEMENT MARKING - LETTERS & SYMBOLS WHITE (SOLID)

(PAINT)

- (M) PAVEMENT MARKING - LINE - 5" WHITE (SOLID)
- (N) PAVEMENT MARKING - LINE - 8" WHITE (SOLID)
- (O) PAVEMENT MARKING - LINE - 5" WHITE (SKIP - DASH)
- (P) PAVEMENT MARKING - LINE - 5" YELLOW (SOLID)
- (Q) PAVEMENT MARKING - LINE - 5" YELLOW (SKIP - DASH)
- (R) PAVEMENT MARKING - LINE - 5" DOUBLE YELLOW (SOLID)

REVISIONS	
NAME	DATE

ILLINOIS DEPARTMENT OF TRANSPORTATION  
**PAVEMENT MARKING DETAILS**  
F.A.U. Route 7978 (OLD US 36) &  
F.A.U. Route 7968 (CAMP BUTLER RD)  
Section: 3R(BR, BR-1, BR-2), 19RS-8  
SANGAMON COUNTY  
SCALE: VERT. \_\_\_\_\_  
          HORIZ. \_\_\_\_\_  
DATE: JULY 20, 2005  
DRAWN BY: JWC  
CHECKED BY: RSC

PLOT DATE = 11/2/2005  
 FILE NAME = c:\pavement\markings\803b30.dgn  
 PLOT SCALE = 20,000 / IN.  
 USER NAME = cckjn