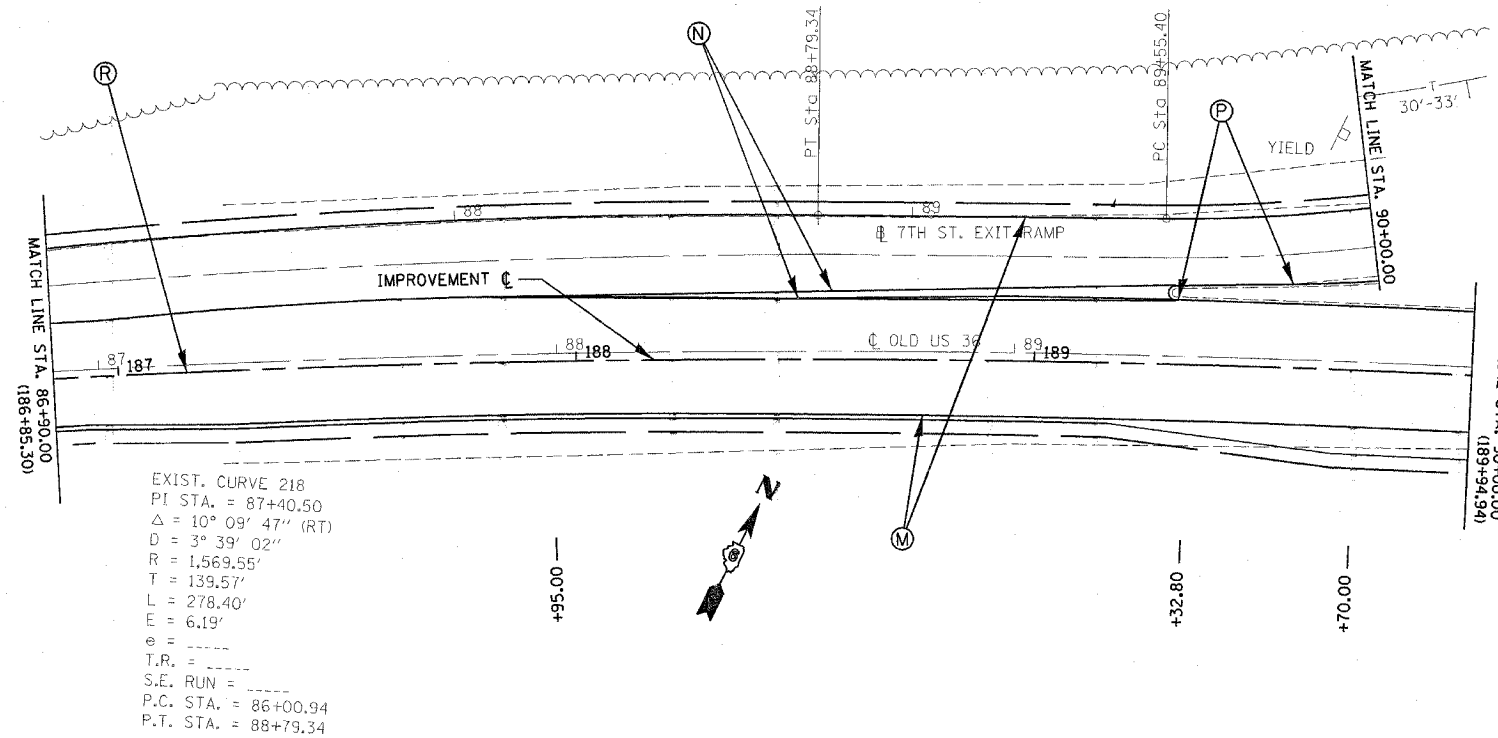


STA. ***	TO STA. ***
FED. ROAD DIST. NO.	ILLINOIS FED. AID PROJECT
.	• 7978 (US 36) & 7968 (CAMP BUTLER RD.)
.	•• 3R(BR, BR-1, BR-2), 19RS-8
.	••• W.B. OLD US 36 - STA 40+00.00 TO STA 49+50.00
.	••• W.B. CAMP BUTLER - STA 22+00.00 TO STA 27+34.53



PAVEMENT MARKING LEGEND	
<i>(THERMOPLASTIC)</i>	
(A)	PAVEMENT MARKING - LINE - 5" WHITE (SOLID)
(B)	PAVEMENT MARKING - LINE - 5" YELLOW (SOLID)
(C)	PAVEMENT MARKING - LINE - 5" YELLOW (SKIP-DASH)
(D)	PAVEMENT MARKING - LINE - 5" DOUBLE YELLOW (SOLID)
(E)	PAVEMENT MARKING - LINE - 6" WHITE (SOLID)
(F)	PAVEMENT MARKING - LINE - 6" WHITE (SKIP-DASH)
(G)	PAVEMENT MARKING - LINE - 12" YELLOW (SOLID)
<i>(PREFORMED PLASTIC, TYPE B)</i>	
(H)	PAVEMENT MARKING - LINE - 5" WHITE (SKIP - DASH)
(I)	PAVEMENT MARKING - LINE - 6" WHITE (SOLID)
(J)	PAVEMENT MARKING - LINE - 6" WHITE (SKIP - DASH)
(K)	PAVEMENT MARKING - LINE - 24" WHITE (SOLID)
(L)	PAVEMENT MARKING - LETTERS & SYMBOLS WHITE (SOLID)
<i>(PAINT)</i>	
(M)	PAVEMENT MARKING - LINE - 5" WHITE (SOLID)
(N)	PAVEMENT MARKING - LINE - 8" WHITE (SOLID)
(O)	PAVEMENT MARKING - LINE - 5" WHITE (SKIP - DASH)
(P)	PAVEMENT MARKING - LINE - 5" YELLOW (SOLID)
(Q)	PAVEMENT MARKING - LINE - 5" YELLOW (SKIP - DASH)
(R)	PAVEMENT MARKING - LINE - 5" DOUBLE YELLOW (SOLID)

REVISIONS	
NAME	DATE

ILLINOIS DEPARTMENT OF TRANSPORTATION  
**PAVEMENT MARKING DETAILS**  
F.A.U. Route 7978 (OLD US 36) &  
F.A.U. Route 7968 (CAMP BUTLER RD)  
Section: 3R(BR, BR-1, BR-2), 19RS-8  
SANGAMON COUNTY  
SCALE: VERT. HORIZ.  
DATE: JULY 20, 2005  
DRAWN BY: JWC  
CHECKED BY: RSC

PLOT DATE = 11/2/2005  
FILE NAME = c:\pave\plans\00327.dgn  
SCALE = 1" = 40'  
USER NAME = crosby