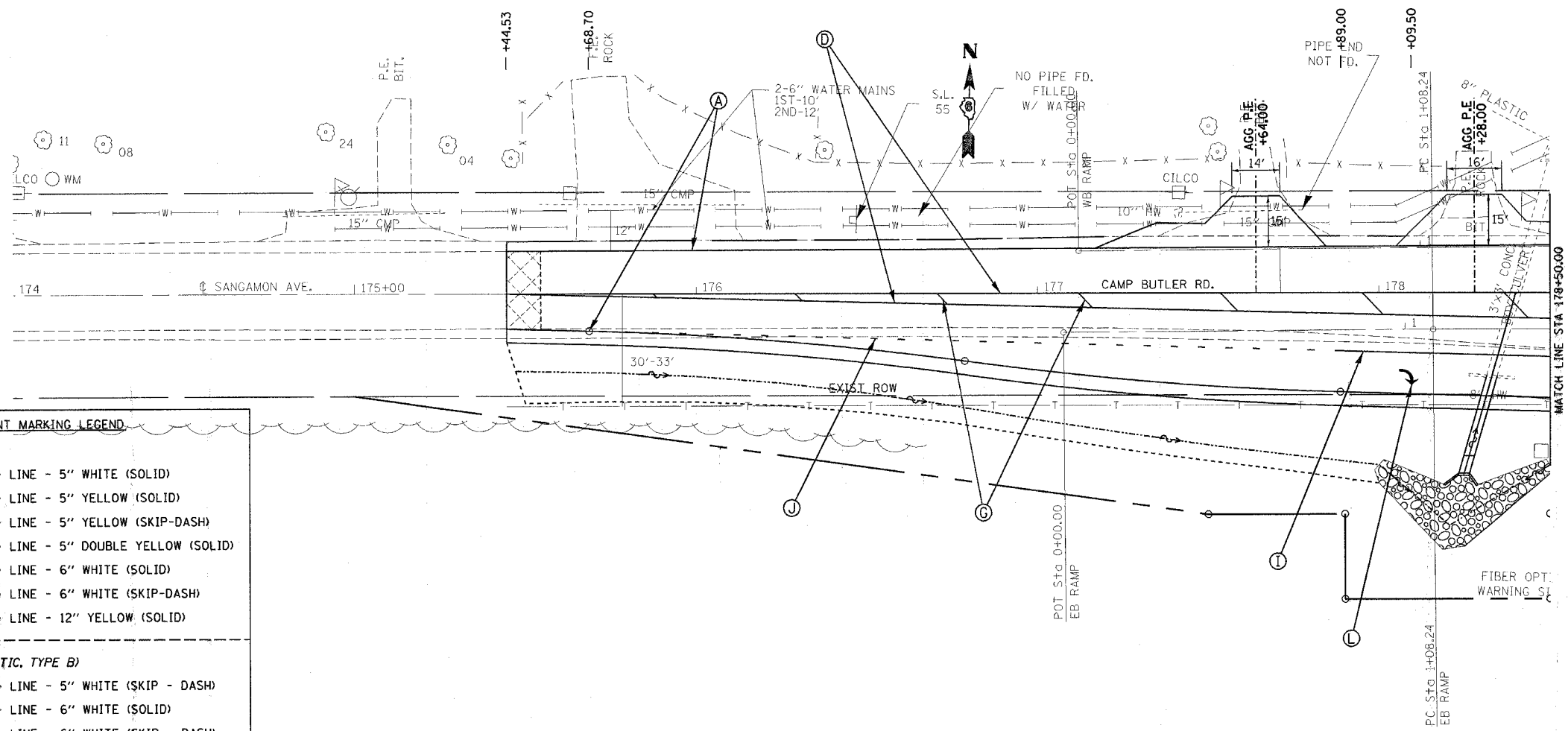


F.A.U. RTE.	SECTION	COUNTY	TOTAL SHEETS	SHEET NO.
*	**	SANGAMON	261	122
STA. 174+00.00		TO STA. 178+50.00		
FED. ROAD DIST. NO.		ILLINOIS	FED. AID PROJECT	
*7978 (OLD US 36) & 7968 (CAMP BUTLER RD)				
**3R(BR, BR-1, BR-2), 19RS-8				



PAVEMENT MARKING LEGEND

(THERMOPLASTIC)

- (A) PAVEMENT MARKING - LINE - 5" WHITE (SOLID)
- (B) PAVEMENT MARKING - LINE - 5" YELLOW (SOLID)
- (C) PAVEMENT MARKING - LINE - 5" YELLOW (SKIP-DASH)
- (D) PAVEMENT MARKING - LINE - 5" DOUBLE YELLOW (SOLID)
- (E) PAVEMENT MARKING - LINE - 6" WHITE (SOLID)
- (F) PAVEMENT MARKING - LINE - 6" WHITE (SKIP-DASH)
- (G) PAVEMENT MARKING - LINE - 12" YELLOW (SOLID)

(PERFORMED PLASTIC, TYPE B)

- (H) PAVEMENT MARKING - LINE - 5" WHITE (SKIP - DASH)
- (I) PAVEMENT MARKING - LINE - 6" WHITE (SOLID)
- (J) PAVEMENT MARKING - LINE - 6" WHITE (SKIP - DASH)
- (K) PAVEMENT MARKING - LINE - 24" WHITE (SOLID)
- (L) PAVEMENT MARKING - LETTERS & SYMBOLS WHITE (SOLID)

(PAINT)

- (M) PAVEMENT MARKING - LINE - 5" WHITE (SOLID)
- (N) PAVEMENT MARKING - LINE - 8" WHITE (SOLID)
- (O) PAVEMENT MARKING - LINE - 5" WHITE (SKIP - DASH)
- (P) PAVEMENT MARKING - LINE - 5" YELLOW (SOLID)
- (Q) PAVEMENT MARKING - LINE - 5" YELLOW (SKIP - DASH)
- (R) PAVEMENT MARKING - LINE - 5" DOUBLE YELLOW (SOLID)

REVISIONS	
NAME	DATE

ILLINOIS DEPARTMENT OF TRANSPORTATION
PAVEMENT MARKING DETAILS
 F.A.U. Route 7978 (OLD US 36) &
 F.A.U. Route 7968 (CAMP BUTLER RD)
 Section: 3R(BR, BR-1, BR-2), 19RS-8
 SANGAMON COUNTY
 SCALE: VERT. DRAWN BY: JWC
 HORIZ. CHECKED BY: RSC
 DATE: JULY 20, 2005

PLOT DATE = 11/2/2005
 FILE NAME = c:\pavement\geneta\d652102\shp\pavementmarking5.dgn
 SCALE = 20.0000' / 1" = 1" = 20.0000'
 USER NAME = rsc